



## Chandos Avenue, London, N14 7ER

**£1,250,000**

- **DETACHED CHALET BUNGALOW**
- **LARGE FAMILY ROOM**
- **SAUNA / HOT TUB / ICE BATH**
- **OFF STREET PARKING X 3**
- **POTENTIAL TO FURTHER EXTEND ( STPP )**
- **SUPERB CONDITION THROUGHOUT**
- **FULLY FITTED KITCHEN WITH SMEG APPLIANCES**
- **OUTDOOR KITCHEN / BBQ AREA**
- **SOUGHT AFTER MINCHENDEN ESTATE**

108, High Street, Potters Bar, EN6 5AT

01707 245 555

[www.home-counties.com](http://www.home-counties.com)

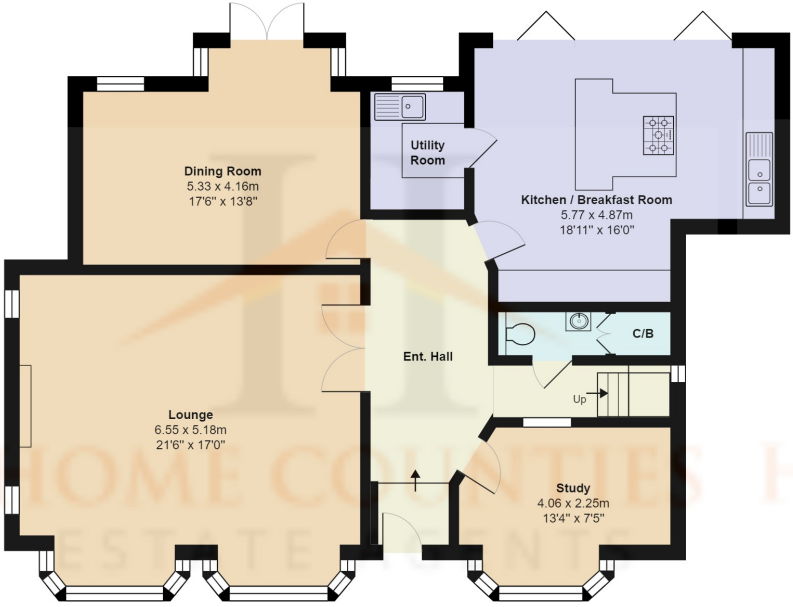
# Chandos Avenue, London, . N14 7ER

## £1,250,000 Freehold

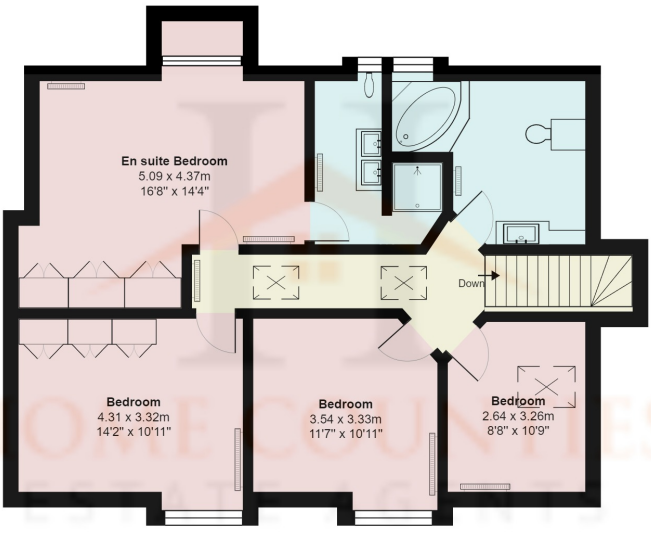
Ideally located on the sought after Minchendon Estate is this absolutely stunning Four Bedroom Detached Chalet Bungalow. The property has previously undergone a full renovation throughout and features a grand entrance with double doors to the large family room with exposed brick wall, lounge and dining area, a second reception / dining room to the rear, utility room, kitchen breakfast room with Smeg appliances, warming drawers, large granite feature island and breakfast seating area, integrated appliances, tiled floor and with zoned smart thermostatic controls and underfloor heating throughout the ground floor. A large office to the front with fish tank feature wall, ideal for those working from home.

The first floor benefits from master bedroom with fitted wardrobes and en-suite shower room, three further bedrooms and a family bathroom and plenty of eaves storage.

To the rear the garden has been fully landscaped and is fully enclosed with mature plants and trees, cherry and grape vines plenty of hidden storage areas, gazebo bbq area, sauna, spa, external shower area, changing area, and patio area. To the front off street parking for three cars, a sunken seating area with firepit and side access either side.



**Ground Floor**  
Area: 121.4 m<sup>2</sup> ... 1307 ft<sup>2</sup>



**First Floor**  
Area: 89.0 m<sup>2</sup> ... 958 ft<sup>2</sup>

**Chandos Avenue, London N14**  
Total Area: 210.4 m<sup>2</sup> ... 2265 ft<sup>2</sup>  
All measurements are approximate and for display purposes only

