

# High Street

Butleigh, BA6 8SZ

COOPER  
AND  
TANNER



£89,950 Freehold

🛏 1 🛋 1 🚿 1 EPC E

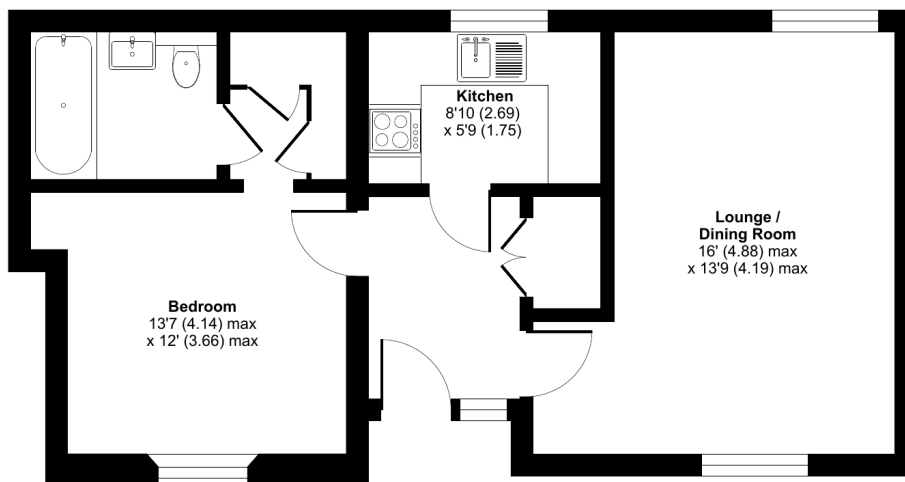
## Description

One bedroom ground floor retirement home situated in a central village location, within easy reach of the village amenities, exclusively for those who are aged 55 years and over. Set over one level, the property benefits from a dual aspect lounge/diner, kitchen with integrated oven and hob and space for white goods, and a double bedroom with built in storage and ensuite facilities. There is access to communal parking facilities and views to toward Glastonbury Tor from the complex grounds.

## High Street, Butleigh, Glastonbury, BA6

Approximate Area = 502 sq ft / 46.6 sq m

For identification only - Not to scale



GROUND FLOOR



Floor plan produced in accordance with RICS Property Measurement Standards incorporating International Property Measurement Standards (IPMS2 Residential). © nichecom 2023. Produced for Cooper and Tanner. REF: 980252



### Features

- Investment opportunity
- Exclusively for those who are 55yrs and over
- En-suite bathroom facilities
- Walking distance of VILLAGE SHOP
- SOUGHT AFTER VILLAGE LOCATION
- Communal parking facilities
- Freehold - Council Tax Band A

### Local Information

- Council Tax Band A
- Tenure Freehold
- EPC Rating E

#### GLASTONBURY OFFICE

Telephone 01458 831077

41, High Street, Glastonbury, Somerset BA6 9DS

[glastonbury@cooperandtanner.co.uk](mailto:glastonbury@cooperandtanner.co.uk)

**COOPER  
AND  
TANNER**

Important Notice: These particulars are set out as a general outline only for the guidance of intended purchasers and do not constitute, nor constitute part of, an offer or contract. All descriptions, dimensions, reference to condition and necessary permissions for use and occupation, warranties and other details are given without responsibility and any intending purchasers should not rely on the m as statements or rep representations of fact but must satisfy themselves by inspection or otherwise as to the correctness of each of them.

