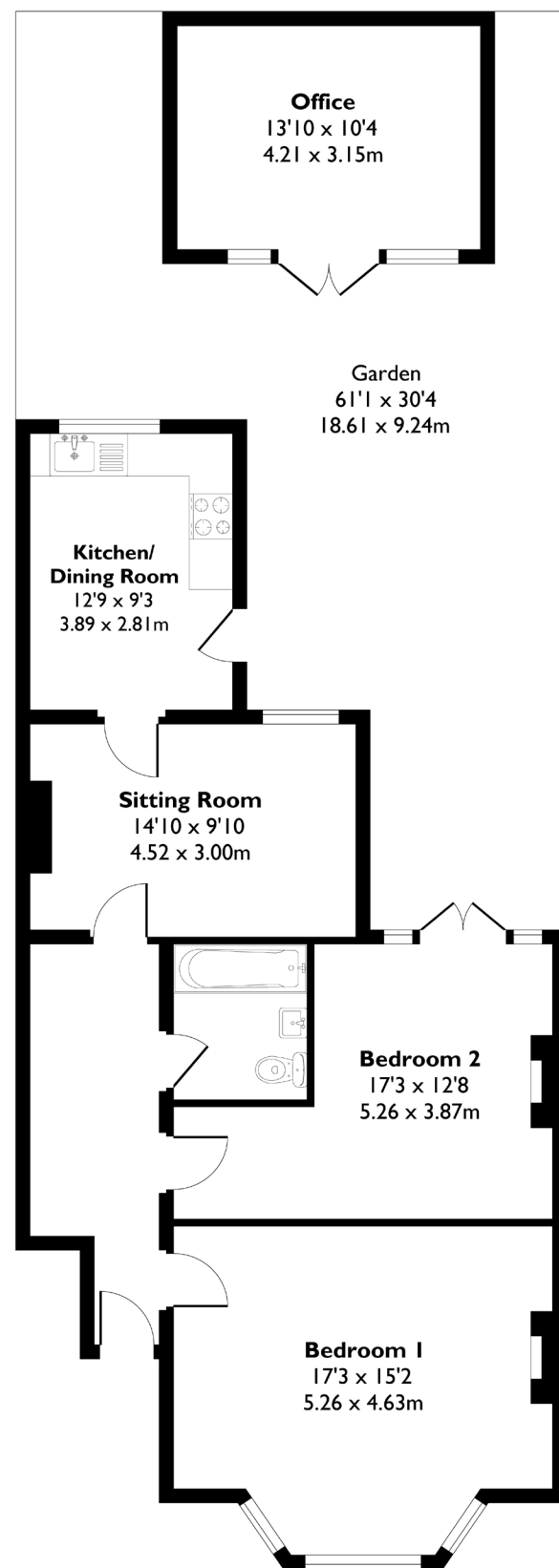
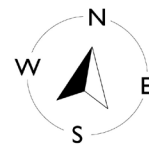


Shakespeare Road, London, W7

Approximate Floor Area = 91.4 sq m / 984 sq ft



Ground Floor



2 BEDROOM FLAT

Shakespeare Road, W7

O.I.E.O £600,000

Welcome to this beautifully presented ground floor two-bedroom, one-bathroom garden flat.

The property offers generously sized rooms, high ceilings, and excellent potential to extend at the rear to create an even larger living space. A versatile outbuilding with electrics, currently arranged as a home office, adds further appeal.

FEATURES

- Two Bedrooms
- One Bathroom
- Separate Kitchen/ Dining
- Private Garden
- Hanwell Station (Elizabeth Line)
- Greenford Avenue Amenities
- Hobbayne Primary School Catchment/Drayton High School
- Potential to Extend (STPP)
- EPC Rating D



2 BEDROOM FLAT

Shakespeare Road, W7

O.I.E.O £600,000

Fully renovated in 2025, this home is truly turn-key and ready to move straight into.

The spacious private garden, accessible from two points at the rear, provides a perfect setting for outdoor living and entertaining. Ideally located, you'll find local amenities on your doorstep,

Hanwell Station (Elizabeth Line) just a 5-minute walk away, and the property sits within catchment for Hobbayne Primary and Drayton Manor High School.

EPC Rating D.

