



BarrettMove



6 High View Close, Marlow, Buckinghamshire SL7 3QN
Guide Price £865,000 - Freehold

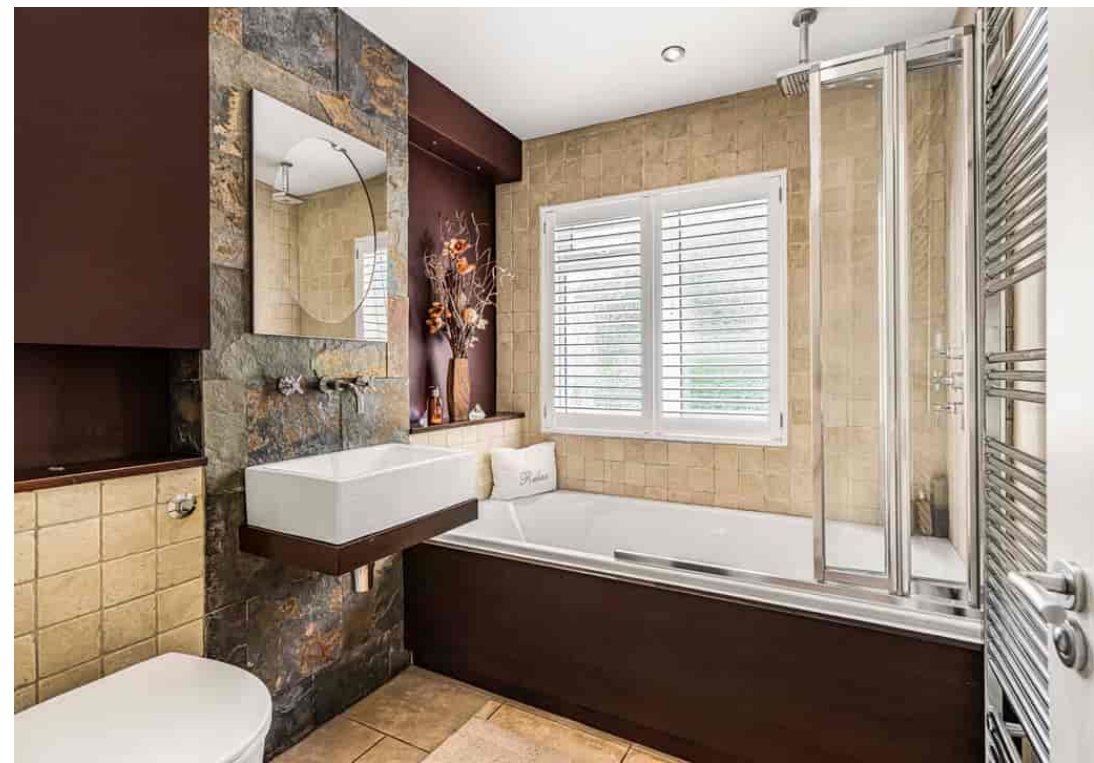
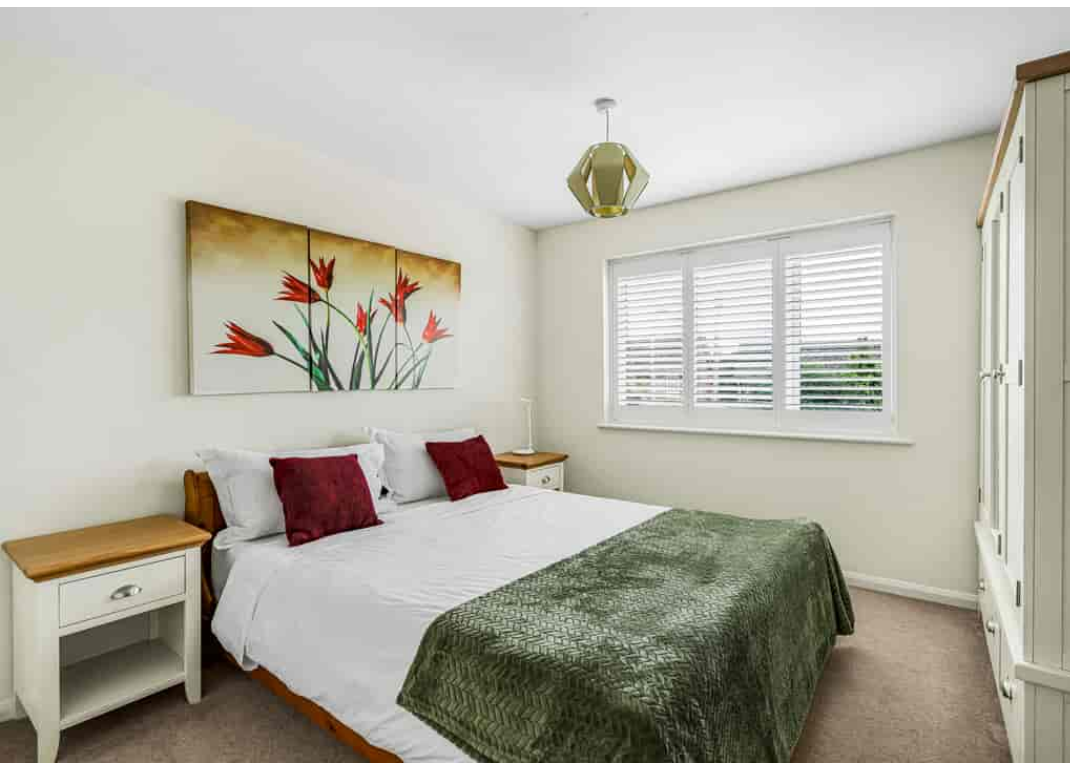


PROPERTY SUMMARY

Barrett Move is delighted to market this well presented, four bedroom detached home with garage and off street parking offering views over open countryside in Marlow Bottom.

POINTS OF INTEREST

- Part vaulted kitchen diner overlooking the garden
- Large lounge with woodburner
- Landscaped garden with lovely views
- Master bedroom with ensuite
- Garage with storeroom behind
- Flexible accommodation
- Beautifully presented
- In catchment for Burford primary, Sir William Borlase and Great Marlow schools
- Close to woodland walks
- Highly recommended for viewing
- Quiet cul de sac in Marlow Bottom

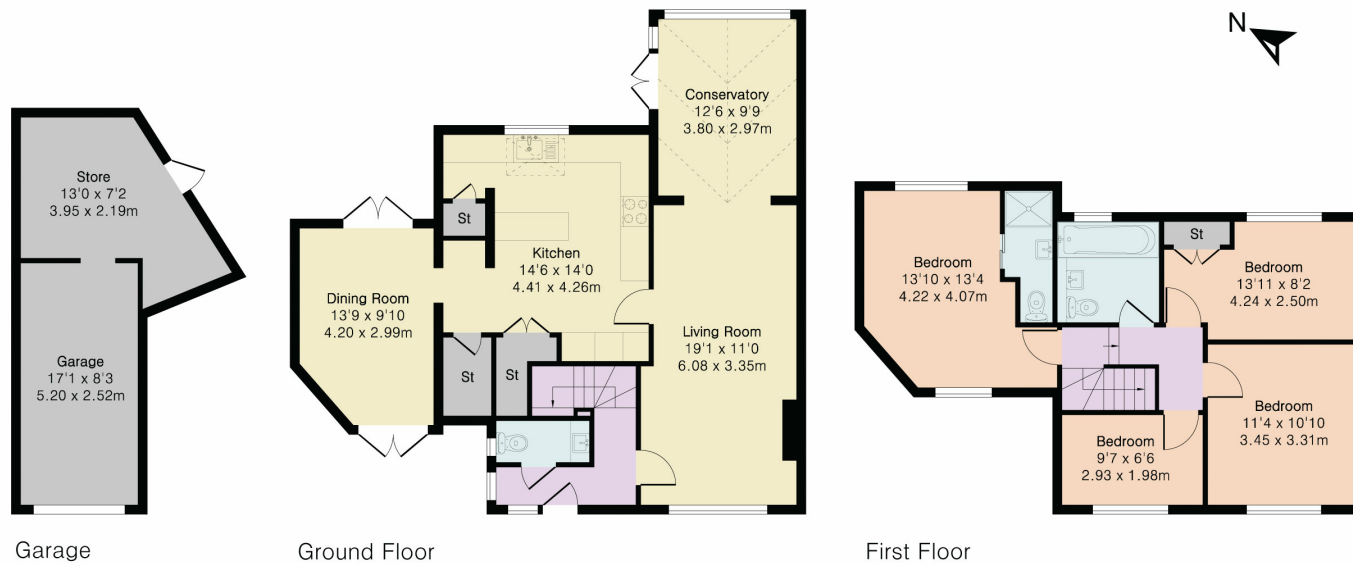


**Approximate Gross Internal Area 1448 sq ft - 134 sq m
(Excluding Garage)**

Ground Floor Area 842 sq ft – 78 sq m

First Floor Area 606 sq ft – 56 sq m

Garage Area 270 sq ft – 25 sq m



Floor plan produced in accordance with RICS Property Measurement 2nd Edition. Although Pink Plan Ltd ensures the highest level of accuracy, measurements of doors, windows and rooms are approximate and no responsibility is taken for error, omission or misstatement. These plans are for representation purposes only and no guarantee is given on the total square footage of the property within this plan. The figure icon is for initial guidance only and should not be relied on as a basis of valuation.

Energy Efficiency Rating			
		Current	Potential
Very energy efficient - lower running costs			
(92+)	A		
(81-91)	B		
(69-80)	C		79
(55-68)	D	63	
(39-54)	E		
(21-38)	F		
(1-20)	G		
Not energy efficient - higher running costs			
England, Scotland & Wales		EU Directive 2002/91/EC	