



4 Groeswen, Llantwit Major, CF61 2UA

£249,995



1 Pound Field, Llantwit Major, Vale Of Glamorgan, CF61 1DL

Tel No 01446 794433. E-Mail [info@brightermoves.co.uk](mailto:info@brightermoves.co.uk)

Web [www.brightermoves.co.uk](http://www.brightermoves.co.uk)



TWO BEDROOM PROPERTY WITH A LOFT AREA AND POTENTIAL THIRD BEDROOM. The property is located on the popular St Illtyd Field Estate and has an open aspect to the front, within short walking distance to Llantwit Major town and schools, local amenities and train station. The property is briefly comprising of entrance porch, lounge, kitchen and conservatory to the ground floor level. The first floor level has a landing, two bedrooms and a family bathroom. The loft room is accessed via the main bedroom with a fixed staircase and has a bathroom attached. Planning was given for a third bedroom, but would need works completed and signed off to local authority regulations to give official third bedroom status. The garden is enclosed by block wall, a wood cabin with electric supply is located at the rear of the garden, side access to the front and two designated parking spots. The property can be sold with NO ONGOING CHAIN.

## GROUND FLOOR

### Entrance

The property is entered via a wood grain uPVC front door to the internal porch. Carpeted stairs lead to the first floor level and a doorway to the lounge.

### Lounge

4.35m x 3.92m (14' 3" x 12' 10") (1.98)  
uPVC double glazed window to the front. Oak flooring, radiator, power points, ceiling light and door way to kitchen.

### Kitchen

3.92m x 2.69m (12' 10" x 8' 10")  
uPVC double glazed window and wood frame door to the conservatory. Range of base and wall units with contrasting worktop over and tiled surrounds. Sink unit with mixer tap over. Space and plumbing for white goods.

### Conservatory

3.86m x 3.53m (12' 8" x 11' 7")  
Block base and uPVC construction. uPVC doors leading into the rear garden.

## FIRST FLOOR

### Landing

Doors leading into both bedrooms and family bathroom.

### Bedroom One

3.67m x 2.84m (12' 0" x 9' 4")  
uPVC double glazed window to the front. Fitted carpet, radiator, power points, ceiling light and access to the loft room.

### Bedroom Two

3.30m x 1.95m (10' 10" x 6' 5")  
uPVC double glazed window to the rear. Fitted carpet, radiator, power points and ceiling light.

### Bathroom

1.99m x 1.88m (6' 6" x 6' 2")  
Three piece suite comprising; Panelled bath with shower over. Low level WC. Pedestal wash hand basin. uPVC double glazed opaque window to the rear.

## LOFT AREA

### Loft Space

3.70m x 2.96m (12' 2" x 9' 9")  
Accessed via a fixed staircase from bedroom one. Two velux windows to the front aspect and one to the rear. Fitted carpet, radiator, power points and spotlights. Doorway into en-suite W.C.

### En-Suite W.C.

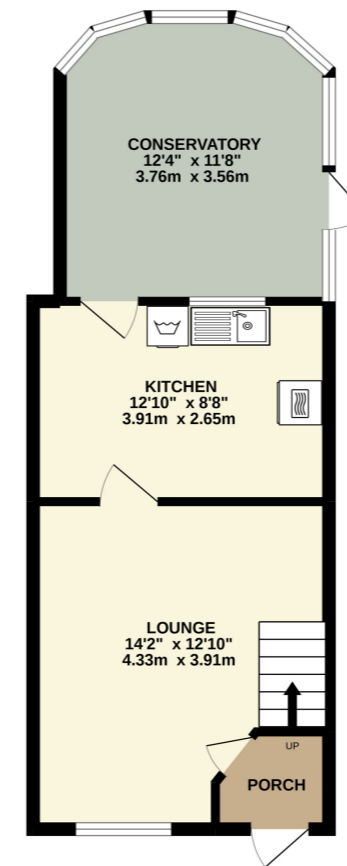
1.37m x 1.20m (4' 6" x 3' 11")  
Two piece suite comprising; low level WC and pedestal wash hand basin.

## EXTERNAL

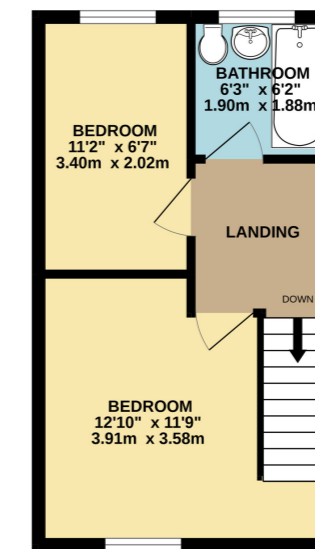
### Gardens

Enclosed wood fencing. The floor area is laid with artificial lawn. There is a gated access to to the front of the property and to the rear of the garden is a wood cabin with electric supply.

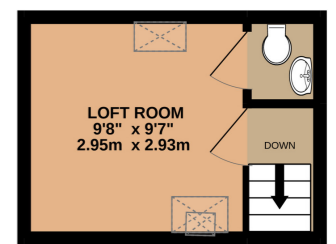
GROUND FLOOR  
431 sq.ft. (40.1 sq.m.) approx.



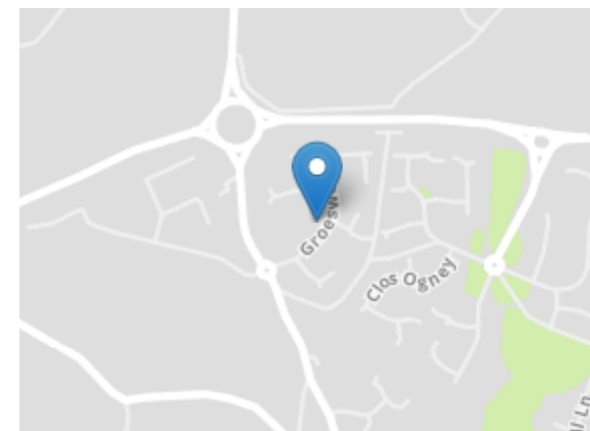
1ST FLOOR  
294 sq.ft. (27.3 sq.m.) approx.



2ND FLOOR  
123 sq.ft. (11.5 sq.m.) approx.



TOTAL FLOOR AREA : 849 sq.ft. (78.8 sq.m.) approx.  
Whilst every attempt has been made to ensure the accuracy of the floorplan contained here, measurements of doors, windows, rooms and any other items are approximate and no responsibility is taken for any error, omission or mis-statement. This plan is for illustrative purposes only and should be used as such by any prospective purchaser. The services, systems and appliances shown have not been tested and no guarantee as to their operability or efficiency can be given.  
Made with Metropix ©2022



**MIS REPRESENTATION ACT 1967:** These Particulars Are For Guidance Only And Their Accuracy Is Not Guaranteed And Neither Do They Form Part Of Any Other Or Contract.

**PROPERTY MIS DESCRIPTION ACT 1991:** All Reasonable Steps Have Been Taken To Ensure That These Particulars Do Not Contain Any Error, Mistake Or Misdescription, As Described By The Property Misdescription Act.

**PROCEEDS OF CRIME ACT 2002:** Brighter Moves Are Obligated To Report Any Knowledge Or Suspicion Of Money Laundering To The Ncis (National Crime Intelligence Service) And Should Such A Report Prove Necessary Are Precluded From Conducting Any Further Professional Work Without The Consent From The Ncis.