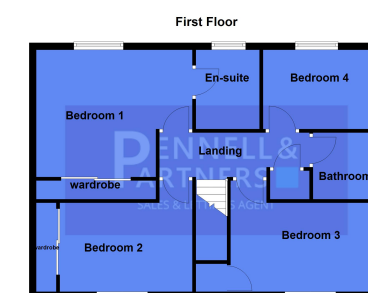
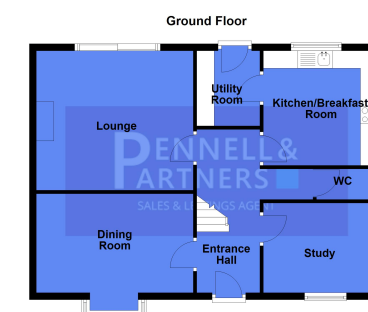




25 HEMMERLEY DRIVE, WHITTLESEY, PETERBOROUGH, CAMBRIDGESHIRE. PE7 1NE

Guide Price £375,000



PENNELL & PARTNERS

26, High Causeway, Peterborough, PE7 1AJ - 01733 209 222 -
hello@pennellandpartners.co.uk

ABOUT THE PROPERTY

*** GUIDE PRICE £375,000 - £385,000***

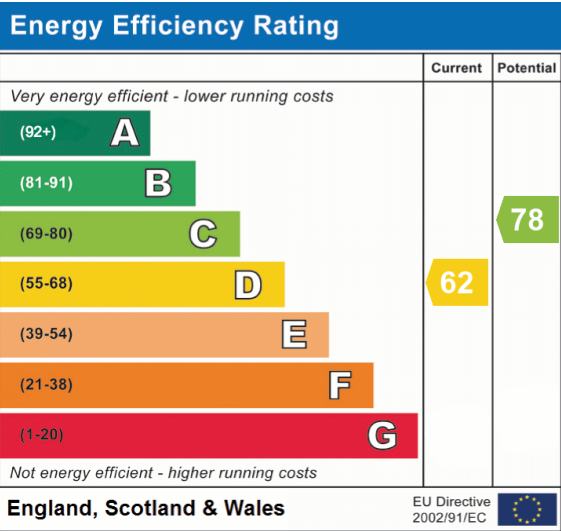
Tucked away on Hemmerley Drive, this spacious four-bedroom detached home is ideal if you're after room for the whole family and a place that just works for everyday living.

Downstairs, you'll find not one but three reception rooms – a bright lounge, a dining room that's perfect for family meals or entertaining, and a study if you need a proper spot to work from home. The kitchen has been recently refitted, with a handy utility room tucked just off it, so there's plenty of space for the practical stuff too.

Upstairs, there are four good-sized double bedrooms, so no one's drawing the short straw. The master comes with its own ensuite, and there's also a modern family bathroom.

Outside, the front garden has been laid to gravel for easy maintenance, while the rear garden is mainly lawn with flower bed borders – a great space for kids, pets, or just sitting out in the sun. To the back, you'll also find an oversized single garage, giving you loads of extra storage or workshop potential.

This is a great home in a popular part of Whittlesey – ready to move straight into and make your own.



GROUND FLOOR

ENTRANCE HALL

LOUNGE

4.50m x 4.00m (14' 9" x 13' 1")

DINING ROOM

4.50m x 2.84m (14' 9" x 9' 4")

STUDY

3.29m x 2.58m (10' 10" x 8' 6")

CLOAKROOM

KITCHEN/BREAKFAST ROOM

3.29m x 3.29m (10' 10" x 10' 10")

UTILITY ROOM

1.81m x 2.15m (5' 11" x 7' 1")

FIRST FLOOR

MASTER BEDROOM

4.48m x 4.00m (14' 8" x 13' 1")

EN-SUITE SHOWER ROOM

BEDROOM TWO

4.48m x 3.76m (14' 8" x 12' 4")

BEDROOM THREE

4.21m x 3.71m (13' 10" x 12' 2")

BEDROOM FOUR

3.29m x 2.12m (10' 10" x 6' 11")

FAMILY BATHROOM

OUTSIDE

GARAGE