



This four bedroom link detached period home is situated right in the heart of Datchet village and its origins date back to the 1600s. The property is offered to the market as fully renovated and the ground floor features a 26ft granite kitchen/diner with under floor heating and an 18ft living room with a log burner and original wood flooring. On the first floor there are four well-sized bedrooms and a four piece family bathroom, with the master bedroom benefiting from an ensuite shower room. Externally there is an enclosed south-facing garden to the rear incorporating two ponds and there is a 15ft garage to the front. This property offers an abundance of character and its stylish features make it an ideal purchase for the discerning buyer. The house is located just a short walk from Datchet Train Station with its access into London Waterloo and Windsor.

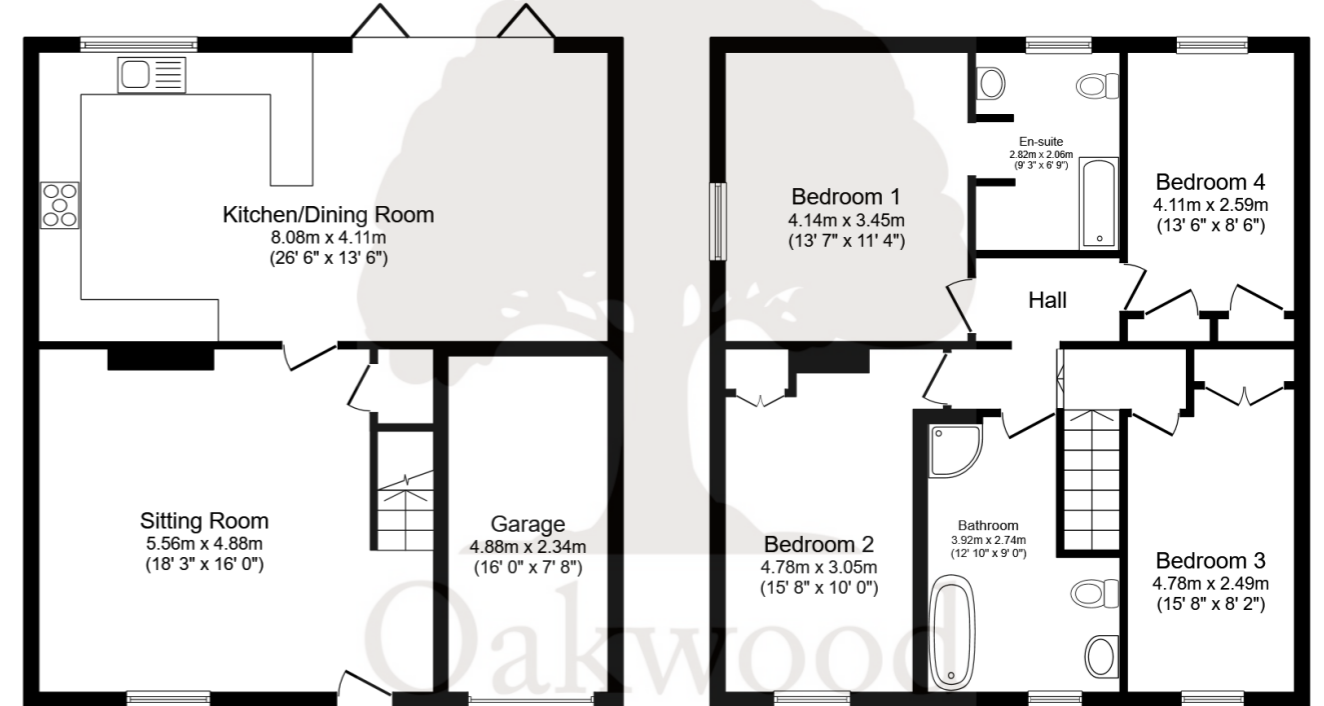


Property Information

Floor Plan

-  **FOUR BEDROOM LINK DETACHED PERIOD HOME**
-  **ENCLOSED SOUTH-FACING GARDEN WITH POND**
-  **26 FT KITCHEN/DINER**
-  **CENTRAL VILLAGE LOCATION**
-  **1600S BUILD**
-  **18FT LIVING ROOM**
-  **EN SUIT AND FAMILY BATHROOM**
-  **15FT GARAGE**

					
x4	x2	x2	x2	Y	Y
Bedrooms	Reception Rooms	Bathrooms	Parking Spaces	Garden	Garage



Ground Floor
Floor area 73.4 m² (790 sq.ft.)

First Floor
Floor area 73.4 m² (791 sq.ft.)

TOTAL: 146.9 m² (1,581 sq.ft.)

This floor plan is for illustrative purposes only. It is not drawn to scale. Any measurements, floor areas (including any total floor area), openings and orientations are approximate. No details are guaranteed, they cannot be relied upon for any purpose and do not form any part of any agreement. No liability is taken for any error, omission or misstatement. A party must rely upon its own inspection(s). Powered by www.Propertybox.io

Prospective purchasers should be aware that these sales particulars are intended as a general guide only and room sizes should not be relied upon for carpets or furnishing. We have not carried out any form of survey nor have we tested any appliance or services, mechanical or electrical. All maps are supplied by Goview.co.uk from Ordnance Survey mapping. Care has been taken in the preparation of these sales particulars, which are thought to be materially correct, although their accuracy is not guaranteed and they do not form part of any contract.



Location

The picturesque village of Datchet offers a range of independent shops catering for day-to-day needs and for the commuter, the rail station provides regular services to London. For more extensive amenities, Windsor and Slough are nearby. Datchet is supremely located for the M4 (J5) which is just 2 miles away, and Heathrow Airport which is also within easy reach. Abundant sporting/leisure facilities in the area include a gym and squash courts in Datchet village; athletics at The Thames Valley Athletics Centre in Eton; sailing on the Queen Mother's Reservoir; golf at Datchet, Sunningdale and Wentworth; and horse racing at Windsor and Ascot.

Transport Links

- Train stations
- Datchet (0.1 miles)
- Sunnymeads (1.4 miles)
- Windsor & Eton Riverside (1.5 miles)

The M4 (J5) is approx. one mile away providing access to Heathrow Airport, London, the West Country and the M25.

Primary Schools

- Datchet St Mary's CofE Primary School
- Distance: 0.1 miles
- Type: State school

- Eton End School Trust (Datchet) Limited
- Distance: 0.5 miles
- Type: Independent school

- St George's School
- Distance: 1.1 miles
- Type: Independent school

- Castlevew Primary School

- Distance: 1.1 miles
- Type: State school

- Long Close School
- Distance: 1.2 miles
- Type: Grammar school

Secondary Schools

Secondary Schools:

- Churchmead Church of England (VA) School
- Distance: 0.1 miles
- Type: State school

- Ditton Park Academy
- Distance: 1 mile
- Type: State school

- St George's School
- Distance: 1.1 miles
- Type: Independent school

- Long Close School
- Distance: 1.2 miles
- Type: Grammar school

- Upton Court Grammar School
- Distance: 1.4 miles
- Type: Grammar school

Council Tax

Band F

