

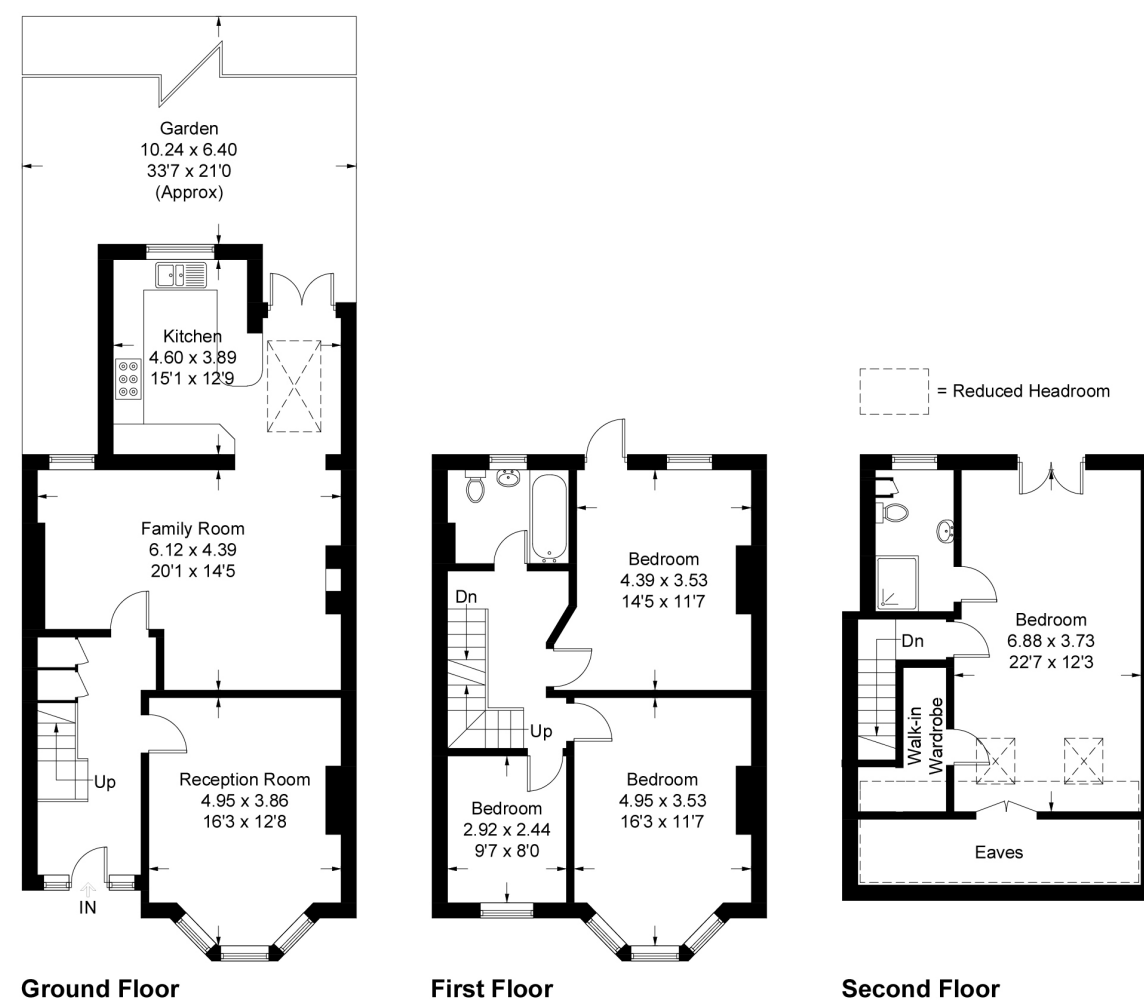
Boston Manor Road, TW8

Approximate Gross Internal Area = 172 sq m / 1852 sq ft
(Including Eaves / Reduced Headroom)

Eaves / Reduced Headroom = 11.1 sq m / 120 sq ft

Total = 160.9 sq m / 1732 sq ft

(Excluding Eaves / Reduced Headroom)



Measured in accordance with RICS Code of Measuring Practice. To be used for identification and guidance purposes only.
Whilst every care is taken in the preparation of this plan, please check all dimensions, shapes and compass bearings before making any decisions reliant upon them.
www.london58.com © 2020 hello@london58.com



4 BEDROOM HOUSE

Boston Manor Road, TW8

£889,950

This handsome terraced house in Boston Manor is welcoming and large.

With four bedrooms, a spacious living room and a generous open plan family room, kitchen/ diner it's well designed for the needs of a modern family. The popular Lionel Road Primary School is also close by.

FEATURES

- Four Bedrooms
- Refurbished by Current Owners
- Two Receptions
- Off Street Parking at Rear
- Period Features
- Moments from Boston Manor Tube and Brentford Station



This house has been sympathetically refurbished with a keen eye for detail.

Inside, the living room is grand in proportion with a large angled bay looking out on to the immaculate front garden. The rear of the house has been opened up to create the perfect kitchen/dining and living space which is great for entertaining. The garden is wonderfully peaceful and has the benefit of having a terrace at the rear which can be used for parking. Inside and upstairs on the first floor, there are three good sized bedrooms each with plenty of room for storage. The family bathroom has a classic white suite with shower over the bath. Upstairs on the second floor, you'll find the master bedroom complete with a smart ensuite bathroom.

