



**Corporation Street
High Wycombe
Buckinghamshire
HP13 6BF**

Offers In Excess Of £176,000

bettermove

Corporation Street High Wycombe

Bettermove are proud to present this 1 bedroom first floor flat in High Wycombe available with no forward chain.

The property is currently tenanted and rental yields can be obtained through Bettermove.

The property benefits from double glazing, electric heating throughout and has off street parking available via the allocated parking space.

The council tax band is B.

This is a leasehold property with 125 years on the lease from 2017; the ground rent is approximately £225pa and the service charge is £841 twice yearly.

The interior of this beautifully presented property comprises a spacious open plan kitchen living area, 1 bedroom and the bathroom.

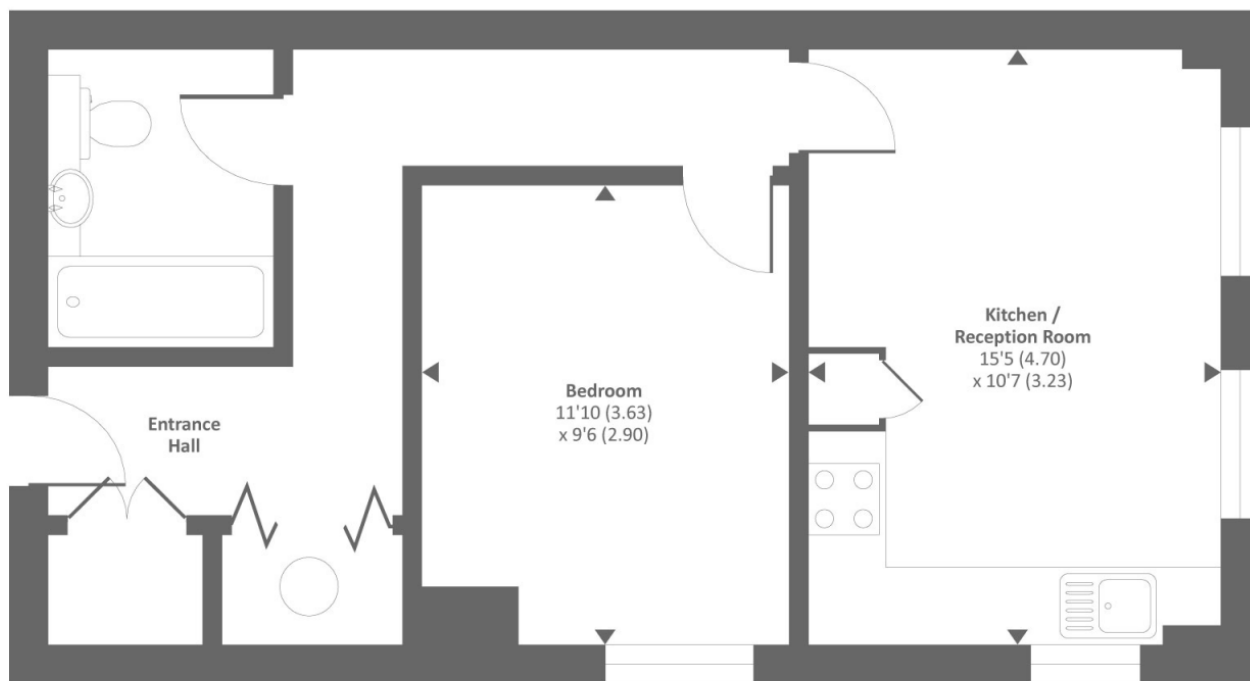
Located in the popular town of High Wycombe, the property is close to a range of amenities, including shops, supermarkets, restaurants and pubs. Excellent transport connections can be found from the A40, High Wycombe train station and many local bus routes.

This exciting opportunity should not be missed! All enquiries can be made through Bettermove on 0330 004 0050.

You can secure the purchase today by paying an exclusivity fee of £1,000 which gives you the rights to purchase within a given timeframe.

Paying this fee ensures that the seller takes their property off the market and reserves it exclusively for you, therefore eliminating the risk of gazumping and aborted costs.





First floor

Approx. gross internal floor area 465 SQFT / 43.1 SQM
 Approx. gross external floor area 560 SQFT / 52 SQM

Energy Efficiency Rating		
	Current	Potential
<i>Very energy efficient - lower running costs</i>		
(92+) A		
(81-91) B		
(69-80) C		80
(55-68) D		
(39-54) E	46	
(21-38) F		
(1-20) G		
<i>Not energy efficient - higher running costs</i>		
England, Scotland & Wales	EU Directive 2002/91/EC	



20-22 Bridge End, Leeds, LS1 4DJ
t: 0330 004 0050 e: hello@bettermove.co.uk
www.bettermove.co.uk