

# 1a Hoopers Pool, Southwick, BA14 9NG

COOPER  
AND  
TANNER



Guide £600,000 - £650,000 Freehold

A rare opportunity has arisen to purchase a brilliantly designed four-bedroom house with far reaching views and an integral garage.

# 1a Hoopers Pool, Southwick, BA14 4NG

 5  1  3 EPC D

---

Guide £600,000 - £650,000 Freehold

## DESCRIPTION

1a Hoopers Pool is a well-proportioned four bedroom, detached property situated within the stunning village of Southwick.

This home is approximately 1800 square feet of internal space, the accommodation includes an entrance hall, an open plan, spacious and bright kitchen/dining room fitted with a high-quality set of units and worktops and with space for a table and chairs. There are also bi-folding doors leading to the private rear garden. The living room links nicely to the kitchen/diner and also enjoys access to the garden.

On the first floor, there are four large double bedrooms, two of which have en-suites and a single room that can double up to be an office. There is also a well-designed family bathroom. From the two rear bedrooms you are able to enjoy far reaching countryside views.

## OUTSIDE

Enjoying a private rear garden, there is also plenty of parking to the front of the house and also access to the integral garage as well.

We advise registering interest early to avoid disappointment.

## LOCATION

Southwick is a large village with a pub, church, shop, junior school, and a village social club situated on the outskirts of the Wiltshire County town of Trowbridge and seven miles from the market town of Frome, with nearby Bradford on Avon all providing a mixture of individual shops and larger stores.

Bath is also within commuting distance. There are lots of accessible countryside walks close by including the 156-acre Southwick Country Park.

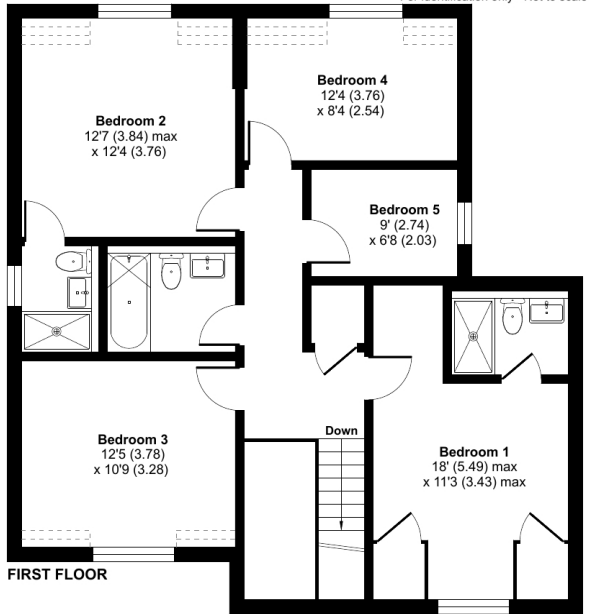
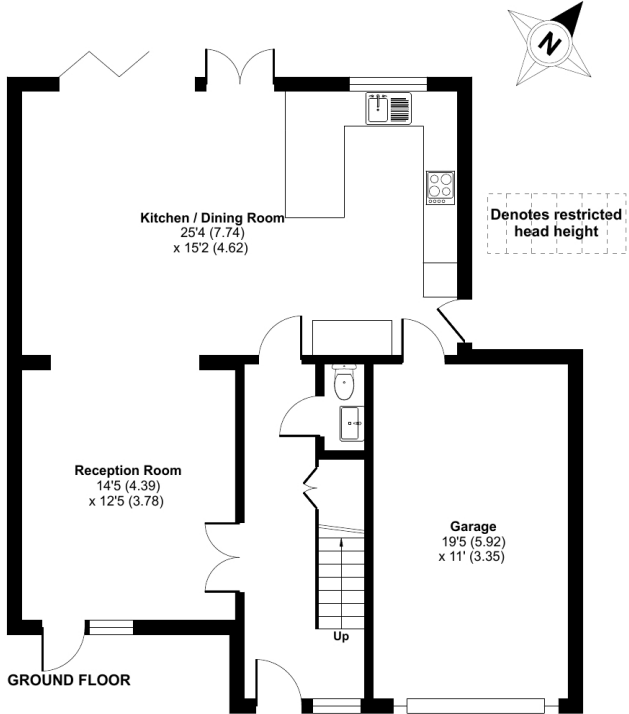






# Hoopers Pool, Southwick, Trowbridge, BA14

Approximate Area = 1784 sq ft / 165.7 sq m  
 Limited Use Area(s) = 31 sq ft / 2.8 sq m  
 Total = 1815 sq ft / 168.5 sq m  
 For identification only - Not to scale



Floor plan produced in accordance with RICS Property Measurement Standards incorporating International Property Measurement Standards (IPMS2 Residential). © nrichcom 2023. Produced for Cooper and Tanner. REF: 965061



FROME OFFICE  
 Telephone 01373 455060  
 6 The Bridge, Frome, Somerset, BA11 1AR  
[frome@cooperandtanner.co.uk](mailto:frome@cooperandtanner.co.uk)



Important Notice: These particulars are set out as a general outline only for the guidance of intended purchasers and do not constitute, nor constitute part of, an offer or contract. All descriptions, dimensions, reference to condition and necessary permissions for use and occupation, warranties and other details are given without responsibility and any intending purchasers should not rely on them as statements or representations of fact but must satisfy themselves by inspection or otherwise as to the correctness of each of them.

