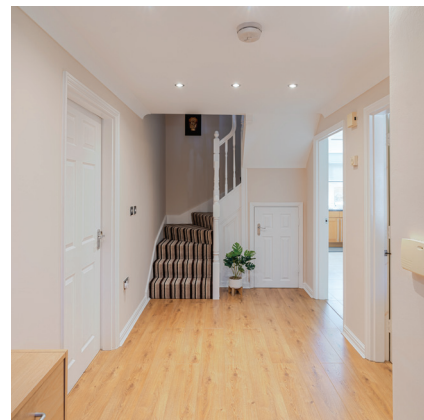




Wentworth Drive

Lancaster





Wentworth Drive



Tucked away on the quiet, tree-lined Wentworth Drive in the much-loved Standen Park development, this stunning five-bedroom detached home offers the ideal blend of character, comfort, and family-friendly living.

Set just across the road from a children's play park, it's the kind of location that makes everyday life easy and enjoyable — perfect for families who want room to grow, relax, and make memories together.

From the outside, the elegant Georgian-inspired façade and spacious driveway set the tone, giving this home real kerb appeal. Inside, you'll find a home that's been beautifully maintained and upgraded throughout and is presented in lovely condition — ready for its next family to simply move in and start enjoying.

This is more than just a house, it's a warm, stylish, and spacious family home, in a fantastic spot, with room to enjoy every stage of family life.



5 BEDS



4 BATHS

- Within walking distance of the city centre.
- The home boasts a kitchen diner living room and two additional reception rooms, offering flexible living options.
- Set just across the road from a children's play park, it's perfect for families.



Take a closer look...

Property Type:

Detached

Square Footage:

2377.3 sqft

Council Tax Band:

F

EPC Rating:

C

Tenure:

Freehold

Why Lancaster?



Lancaster is a historic City with a vibrant bar culture. The accessibility to the m6 makes the perfect place to settle in a semi rural community with a plethora of local amenities and attractions on your doorstep. There are many excellent schools on the doorstep and the location of the local hospital and University attracts many academics to the area.

Lancaster's historic castle offers guided tours through preserved courtrooms and prison cells, providing insights into the legal and penal history of the 18th and 19th centuries. For a tranquil experience, consider driving or cycling through the scenic, isolated landscapes of the Trough of Bowland. Wildlife, picturesque stops like Dunsop Bridge, and peaceful picnics await you here. If you fancied an evening stroll into town, the Dukes Theatre/Cinema and cafe bar is a welcoming choice.

Wentworth Drive is known for its peaceful setting and friendly community feel, yet it's just a short distance from the hustle and bustle of Lancaster city centre. Local schools, parks, shops, and amenities are all within easy reach, making it a superb location for families looking to enjoy a calm and connected lifestyle.



The Garden



Outside, the large south-facing garden is perfect for summer BBQs, family games, or simply soaking up the sunshine. There's plenty of space for kids to play, as well as generous patio areas ideal for entertaining. And with the playground just steps away across the road, outdoor fun is always close at hand.

A detached double garage sits to the side of the plot, and the driveway provides parking for multiple vehicles, adding extra convenience for busy family life.



Garage



Parking



Garden





The Bedrooms



Set across three floors, the layout offers versatility and privacy for everyone in the household. On the first floor, there are two double bedrooms, of which benefit from their own en-suite bathrooms — perfect for teenagers or guests who need their own space.

There is also a generous single bedroom which would make a great home office or nursery. The top floor features two further double bedrooms.



Kitchen Diner & Living Room



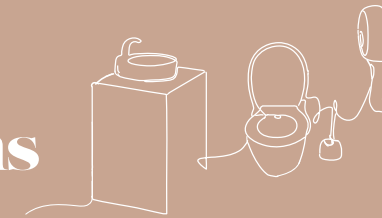
The real showstopper here is the incredibly impressive extended kitchen/living room. Flooded with natural light thanks to large windows and glazed doors, this expansive space has been designed with modern family living in mind. Whether it's weekday breakfasts, hosting family parties, or lazy Sunday afternoons, this room will quickly become the heart of the home.

There's room for a large dining table, a cozy seating area, and space for children to play — all with stunning views and direct access out to the south-facing garden.

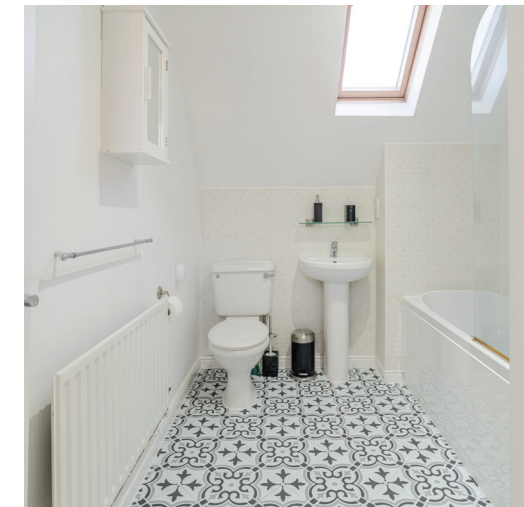




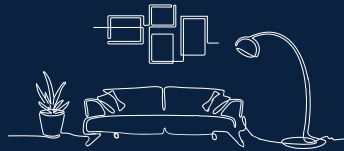
The Bathrooms



Alongside a downstairs WC and the two en suites on the first floor, the top floor features a stylish family bathroom, creating a quiet, tucked-away haven ideal for older children or visiting family.

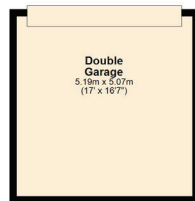


The Lounges

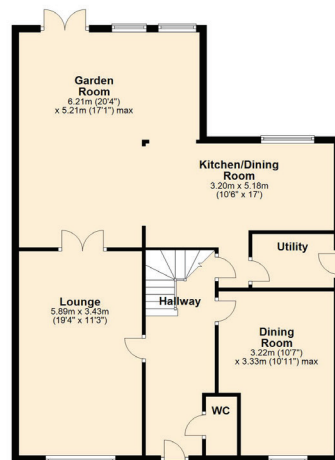


The main lounge provides a cosy space to unwind, complete with a feature gas fireplace and French doors that open directly into the extension — perfect for when you want a larger open area for entertaining. There's also an additional reception room on the ground floor that can flex to your needs, whether that's a playroom, snug, formal dining room, or a second home office.

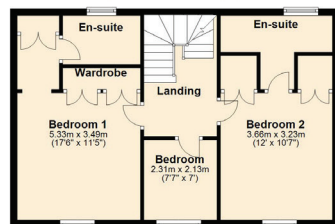




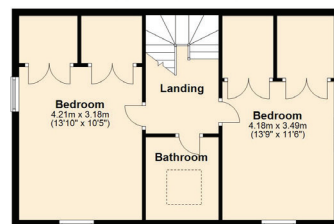
Ground Floor
Approx. 121.5 sq. metres (1307.5 sq. feet)



First Floor
Approx. 82.2 sq. metres (881.5 sq. feet)



Second Floor
Approx. 47.2 sq. metres (508.3 sq. feet)



Total Area: 220.9 sq. metres (2377.3 sq. feet)



About Lune Valley Estates

Nestled in the heart of the breath-taking Lune Valley we are a professional independent agency specialising in luxury property. We understand the significance of moving home and that both selling your existing home and finding the next one is as much financial as it is emotional. We combine local expertise, a strong network of partners and a proactive approach to ensure you have the best possible experience and can begin the next chapter with excitement.



“Honesty, integrity, and client care are fundamental values stitched into the fabric that makes Lune Valley Estates and we make them a part of everything we do.”





Wentworth Drive

Lancaster

/// [///shields.starfish.socket](http://shields.starfish.socket)



015242 56625 | team@lunevalleyestates.com | www.lunevalleyestates.com