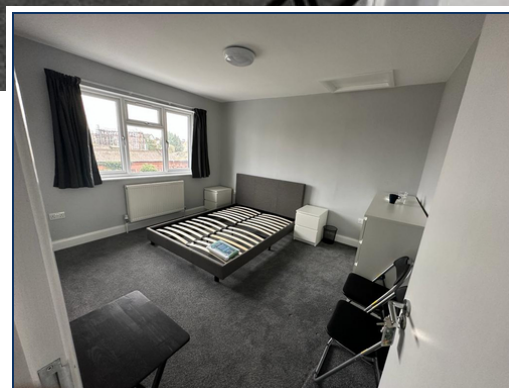


Room Six 142 Harrowdene Road, North Wembley, Greater London, HA0 2JF

£1,000 pcm

- First Floor Double Bedroom with En Suite Shower Room
- Shared Use of Modern Fitted Kitchen
- Council Tax (for one year), Gas & Water Included
- Available early July 2024
- References Essential
- EPC Rating D



FIRST FLOOR DOUBLE BEDROOM WITH EN SUITE SHOWER ROOM, in this Converted House very convenient for North Wembley Bakerloo Line Station & shops. Shared Use of Modern Fitted Kitchen. Council Tax (for one year), Gas & Water included. (Each room has own electric metre). Due to licence restrictions this room is suitable for two people. Window overlooking the garden

Communal Entrance

Stairs to first floor.

ROOM SIX (Double Room)

Radiator, double bed, wardrobe & chest of drawers, carpet, double glazed window to the rear. Door to En Suite:

En Suite Shower Room / wc

Shower cubicle, wash hand basin, wc, walls part tiled, tiled floor, double glazed window.

Additional Information

Rent is £1,000 pcm (one month's rent due before the commencement of the agreement).

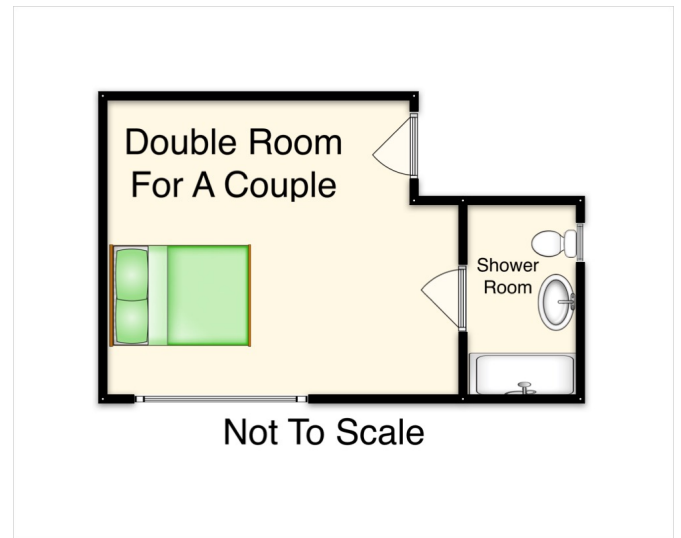
Deposit £1,153.84 due before the commencement of the agreement.

Council Tax (included for one year), gas and water included. Each flat has its own electric sub meter.

Wifi included

DISCLAIMER

Whilst we endeavour to make our details accurate and reliable, if there is any point which is of particular importance to you please contact our office and we will be pleased to verify any information. Photos are from our library. Property particulars are prepared as a guide, and are not intended to constitute part of an offer or contract.



| Energy Efficiency Rating | | Current | Potential |
|---|----------|-------------------------|-----------|
| Very energy efficient - lower running costs | | | |
| (92-100) | A | | |
| (81-91) | B | | 85 |
| (69-80) | C | | |
| (55-68) | D | 68 | |
| (39-54) | E | | |
| (21-38) | F | | |
| (1-20) | G | | |
| Not energy efficient - higher running costs | | | |
| England, Scotland & Wales | | EU Directive 2002/91/EC | |