

FOR SALE

Westcroft Square,
Hammersmith, W6

Flat
Ravenscourt Park

£825,000 sh of fh

2  2  2 

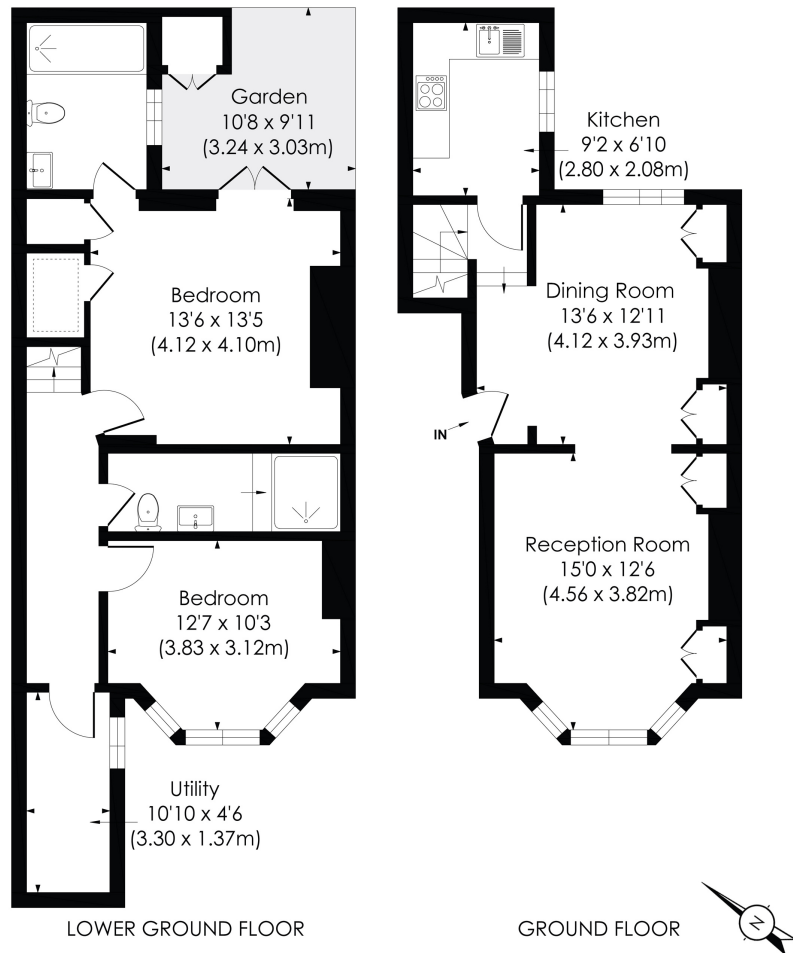


**horton
andgarton**

SALES / LETTINGS / PROPERTY MANAGEMENT

hortonandgarton.co.uk | Sales 020 8819 0510 | Lettings 020 8819 0511
172 King Street, Hammersmith, W6 0QU





WESTCROFT SQUARE, W6
 Approx. Gross Internal Floor Area
994 Sq' / 92.35 SqM

**horton
andgarton**

© Pixangle Property Marketing Ltd. info@pixangle.com Tel: 0208 870 2118

This floor plan has been prepared for the purpose of illustration only in accordance with the latest RICS code of measuring practice and is not to scale. All measurements and areas are approximate and whilst every effort has been made to ensure the accuracy of the plan contained here, no responsibility is taken for any error, omission or misstatement.



Split level garden flat | Two bedrooms - Two bathrooms
 | 994 Sq' – 92.35 SqM | Private courtyard garden | EPC
 rating D | Ravenscourt Park



hortonandgarton.co.uk
 Sales 020 8819 0510
 Lettings 020 8819 0511

172 King Street, Hammersmith, W6 0QU