



**Kipling Close
Thatcham
Berkshire
RG18 3AY**

Offers In Excess Of £352,000

bettermove

Kipling Close Thatcham

A SPACIOUS house in Thatcham, available TENANTED for IMMEDIATE investment and CHAIN FREE. Call to enquire!

Bettermove are proud to present this 3 bedroom semi-detached house in Thatcham available with no forward chain.

The property is currently tenanted and rental yields can be obtained through Bettermove.

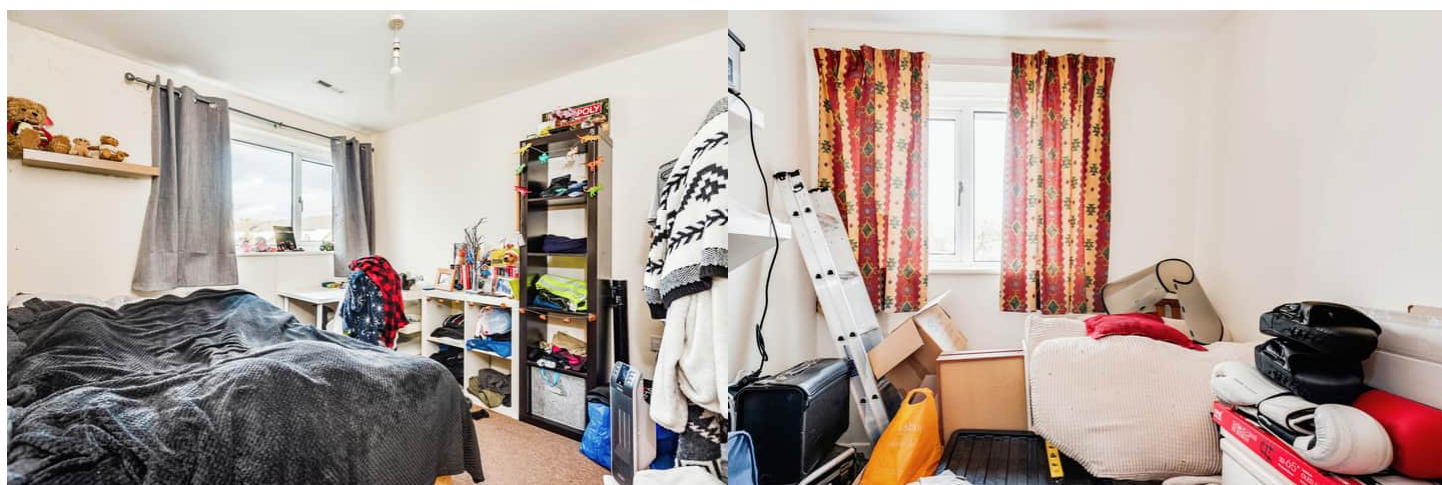
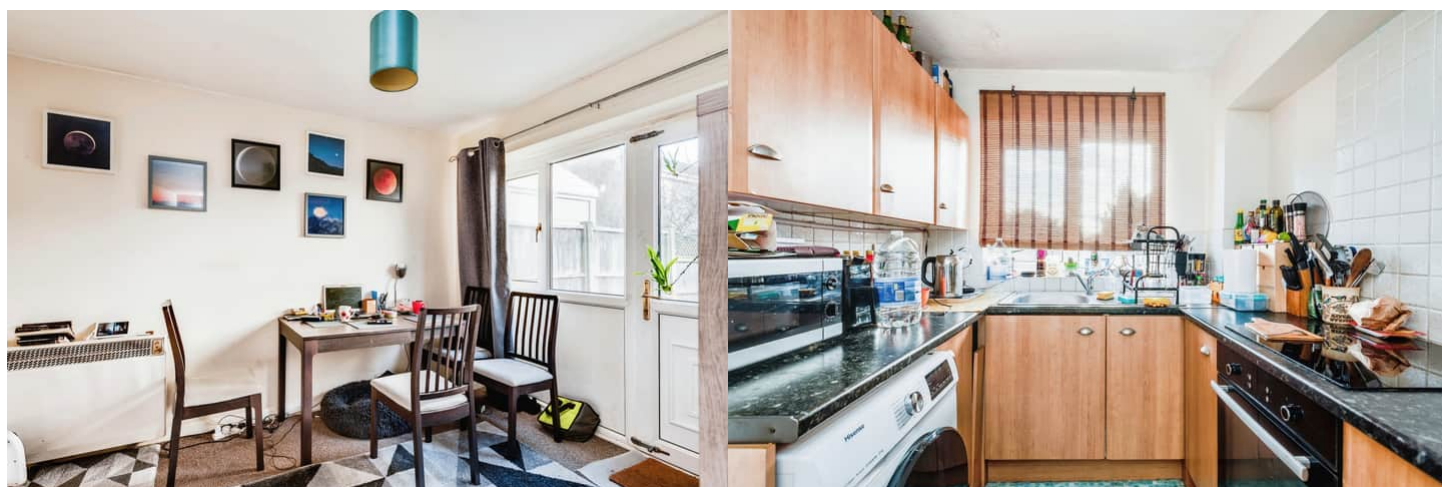
The property benefits from double glazing, gas central heating throughout and has off street parking available

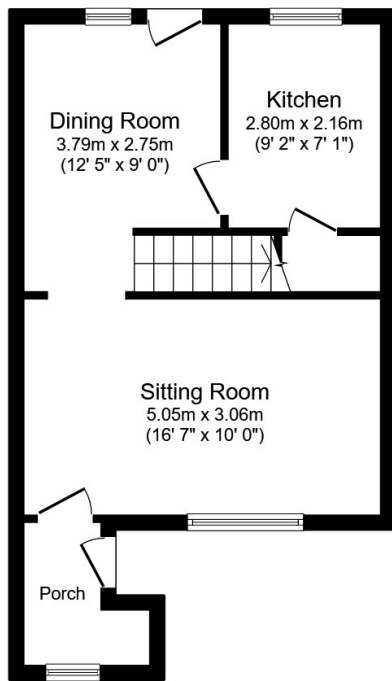
The council tax band is C.

The interior of this beautifully presented property comprises a spacious living room and fitted kitchen/diner on the ground floor. The first floor consists of 3 bedrooms and the family bathroom. The exterior boasts a private rear garden, perfect for enjoying the summer months.

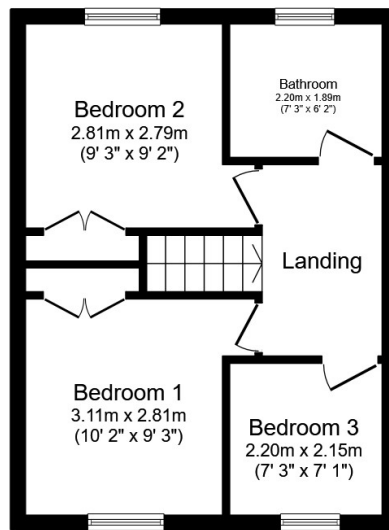
Located in the popular town of Thatcham, the property is close to a range of amenities, including shops, supermarkets, restaurants and pubs. Excellent transport connections can be found from the A339, Newbury train station and many local bus routes.

This exciting opportunity should not be missed! All enquiries can be made through Bettermove on 0330 004 0050.

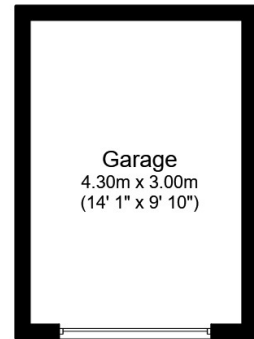




Ground Floor



First Floor



Garage

Total floor area 86.0 m² (925 sq.ft.) approx

This floor plan is for illustrative purposes only. It is not drawn to scale. Any measurements, floor areas (including any total floor area), openings and orientation are approximate. No details are guaranteed, they cannot be relied upon for any purpose and they do not form part of any agreement. No liability is taken for any error, omission or misstatement. A party must rely upon its own inspection(s). Powered by www.focalagent.com



20-22 Bridge End, Leeds, LS1 4DJ
t: 0330 004 0050 e: hello@bettermove.co.uk
www.bettermove.co.uk