

FOR
SALE



Poplar Crescent, West Ewell, Surrey KT19 9ER

£500,000 - Freehold



252, Chessington Road, Ewell, Epsom, KT19 9XF 0208 394 2555 sales@jacksonnoon.com

PROPERTY SUMMARY

JACKSON NOON ESTATE AGENTS are pleased to offer this THREE BEDROOM SEMI-DETACHED HOUSE located on a POPULAR RESIDENTIAL ROAD with through lounge, conservatory, BATHROOM AND CLOAKROOM, double glazing, gas central heating, FRONT AND REAR GARDENS, OWN DRIVE TO GARAGE.....CALL NOW TO VIEW.....NO CHAIN.

POINTS OF INTEREST

- *Three Bedroom Semi-Detached House*
- *Through Lounge*
- *Bathroom & Cloakroom*
- *Front & Rear Gardens*
- *Own Drive & Garage*
- *Popular Road*
- *No Chain*



ROOM DESCRIPTIONS

Front Door to

Entrance Porch

Door to

Entrance Hall

Cloaks hanging space, radiator

Cloakroom

Comprising low level wc, wash hand basin, radiator, double glazed window

Through Lounge

23' 2" x 12' 6" (7.06m x 3.81m) Feature fireplace, two radiators, understairs cupboard housing boiler, double glazed window

Kitchen

8' 6" x 7' 6" (2.59m x 2.29m) Single drainer 1 1/2 bowl sink unit inset in roll top work surface, range of cupboards and units, space for fridge freezer, plumbing for autowash, space for cooker, double glazed window

Conservatory

14' 8" x 7' 10" (4.47m x 2.39m) Radiator, double windows, double glazed doors to garden

Stairs to First Floor

Landing

Access to loft, double glazed window

Bedroom 1

12' 3" x 8' 11" (3.73m x 2.72m) Radiator, fitted wardrobes, airing cupboard, double glazed window

Bedroom 2

8' 10" x 8' 4" (2.69m x 2.54m) Radiator, fitted wardrobes, double glazed window

Bedroom 3

9' 5" x 6' 9" (2.87m x 2.06m) Radiator, fitted cupboard, double glazed window

Bathroom

Comprising panel enclosed bath with mixer tap and shower attachment, low level wc, wash hand basin, radiator, tiled walls, double glazed window

Outside

Front Garden

Lawn area, off street parking

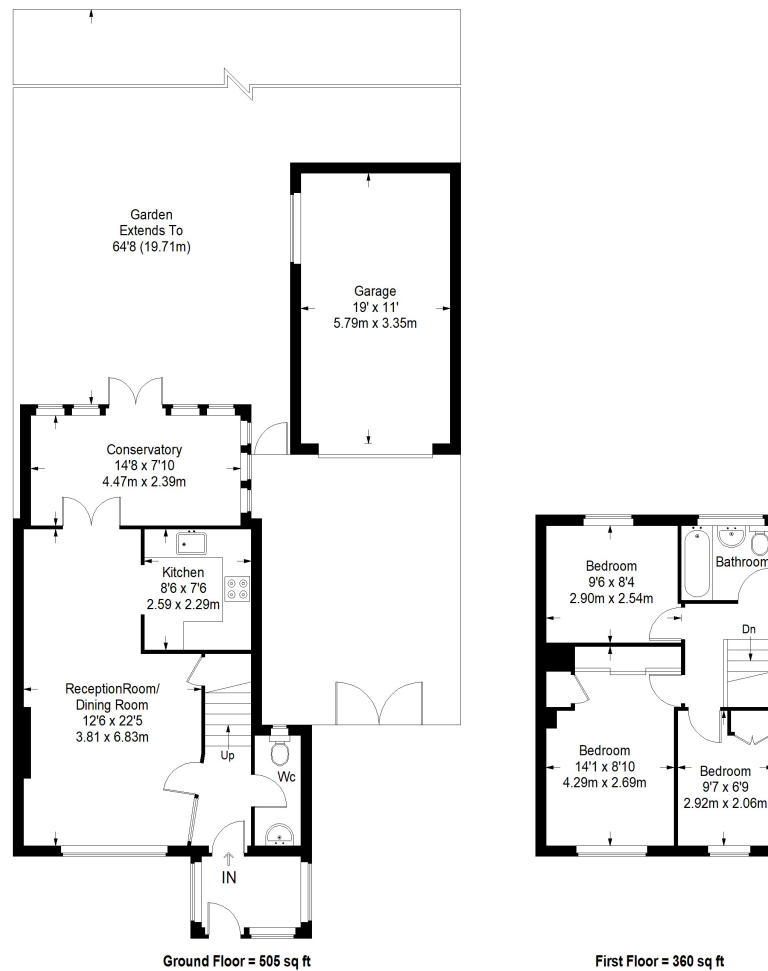
Rear Garden

Patio area, mainly laid to lawn, side access

Garage

Double glazed window, power and lighting

Poplar Crescent



Approximate Gross Internal Area
 GROUND FLOOR = 505 sq ft / 46.91 sq m
 FIRST FLOOR = 360 sq ft / 33.44 sq m
 GARAGE = 200 sq ft / 18.58 sq m
 Total = 1065 sq ft / 98.94 sq m

This plan is for layout guidance only. Not drawn to scale unless stated. Windows and door openings are approximate. Whilst every care is taken in the preparation of this plan, please check all dimensions, shapes and compass bearings before making any decisions reliant upon them. (ID357409)