



SOLE
AGENT

Flat 3

14 Fountain Street | St Peter Port | GY11DA

This top floor apartment is situated within a stones throw from the High Street. The property has been finished to a high standard throughout and is likely to suit a professional working in Town. Accommodation comprises open plan kitchen/living room, double bedroom, shower room and a utility cupboard. Regret not suitable for smokers, pets or children. Ideally suited for a single professional. Available immediately.

£1,200 pcm

1 BEDROOM

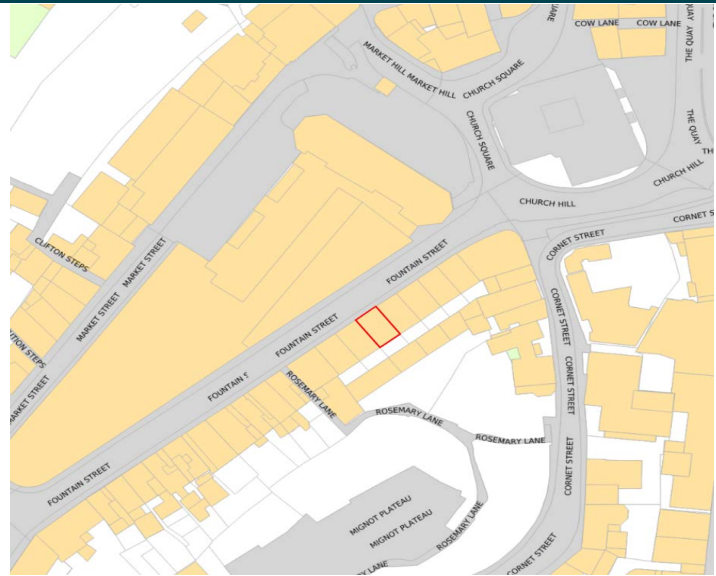
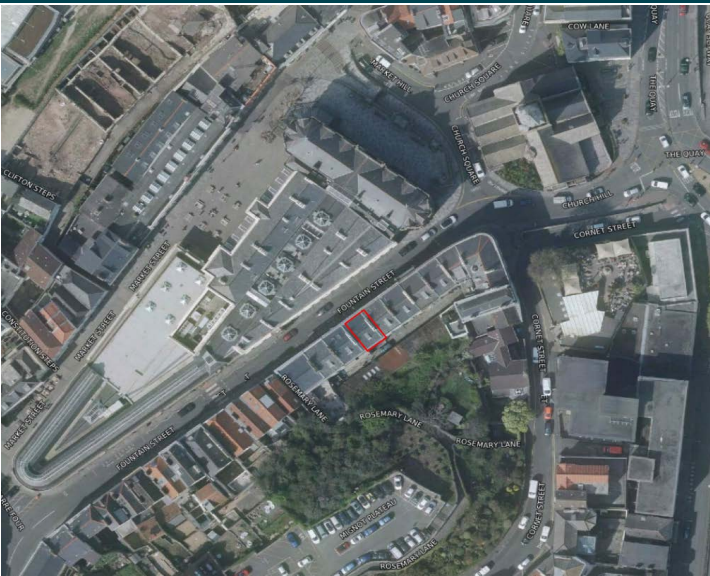
1 BATHROOM

1 RECEPTION

PHOTOS



SPECIFICATIONS



Entrance Hall

2.26m x 1.00m (7' 5" x 3' 3")

Kitchen/Lounge/Diner

5.61m x 3.26m (18' 5" x 10' 8")

Bedroom

3.85m x 3.29m (12' 8" x 10' 10")

Shower Room

2.51m x 0.97m (8' 3" x 3' 2")

PRICE INCLUDES

Fitted flooring
Light fittings

SPECIAL FEATURES

- High ceilings
- Feature exposed walls
- Convenient location

SERVICES

Mains water, electricity and drainage. Electric heating.

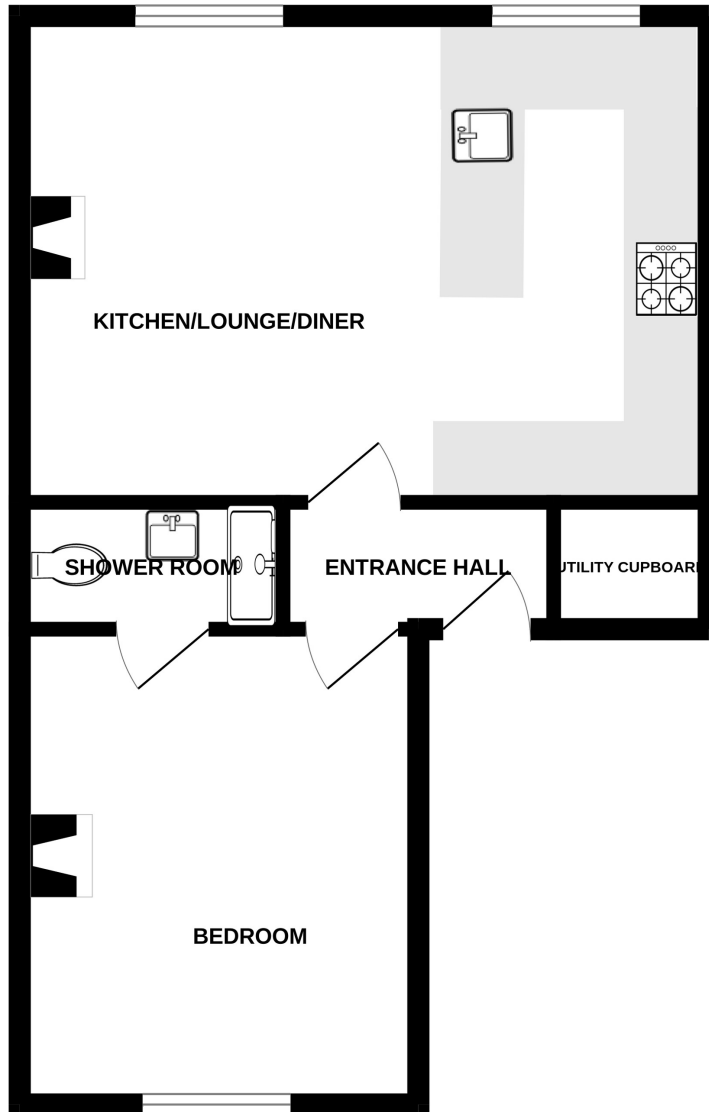
APPLIANCES INCLUDED

Electric oven, ceramic hob and extractor
Fridge/freezer

SCHOOL CATCHMENT

n/a

TOP FLOOR



FLAT 3, 14 FOUNTAIN

Whilst every attempt has been made to ensure the accuracy of the floorplan contained here, measurements of doors, windows, rooms and any other items are approximate and no responsibility is taken for any error, omission or mis-statement. This plan is for illustrative purposes only and should be used as such by any prospective purchaser. The services, systems and appliances shown have not been tested and no guarantee as to their operability or efficiency can be given.
Made with Metropix ©2025