



Day & Co
ESTATE AGENTS

28 Cavendish Street
Keighley
BD21 3RG



54 Highfell Rise, Keighley, West
Yorkshire, BD22 6LG

£269,995

T: 01535 664609

W: www.dayandcoestateagents.co.uk

E: keighley@dayandcoestateagents.co.uk

- FOUR BEDROOM SEMI-DETACHED
- CONSERVATORY
- ELEVATED POSITION, CUL-DE-SAC

- FAMILY ACCOMMODATION
- UNDERHOUSE GARAGE, GARDENS
- EPC RATING C

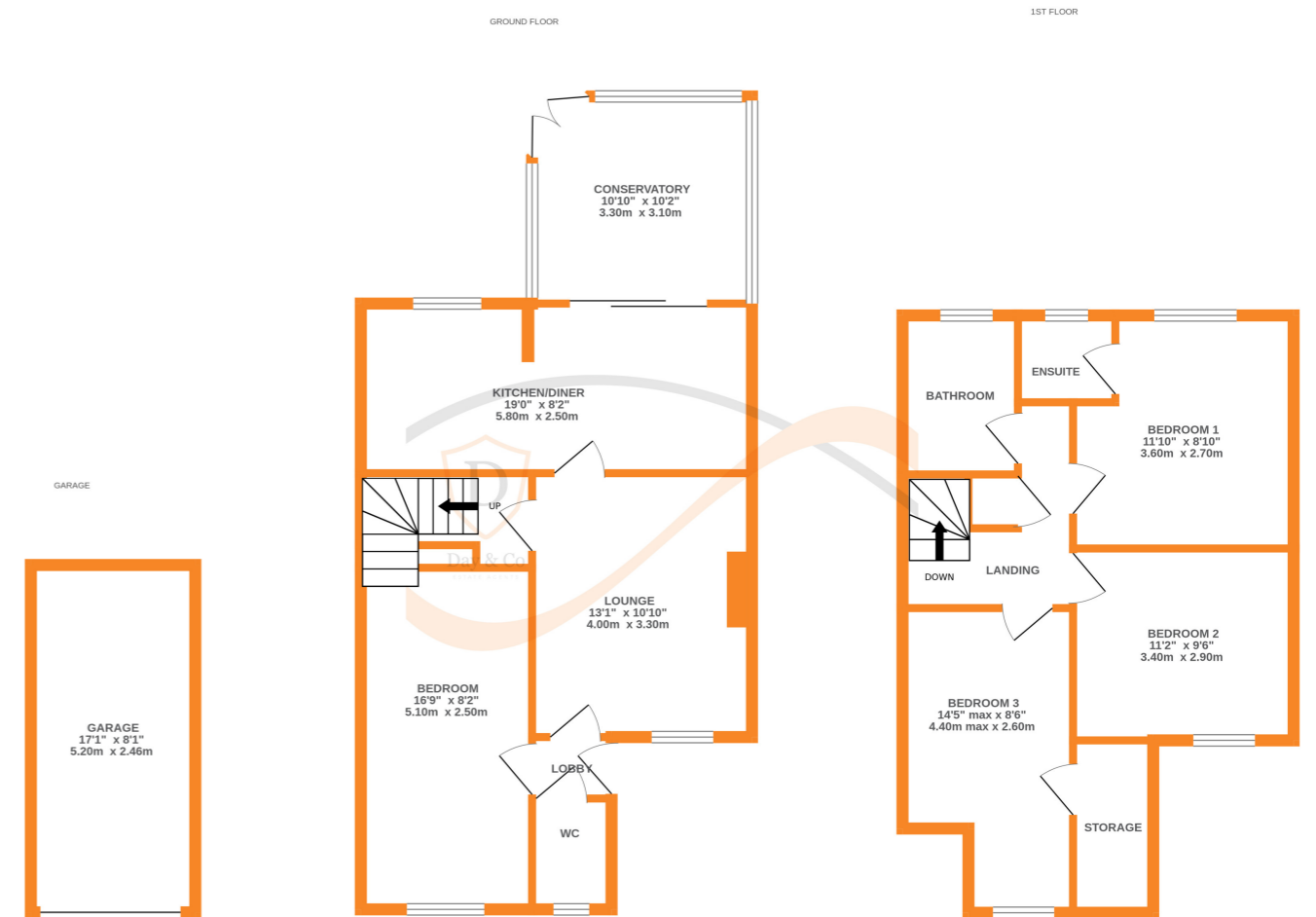
SUMMARY

** FOUR BEDROOM SEMI-DETACHED HOUSE, ELEVATED POSITION, CONSERVATORY, PLEASANT SOUTHERLY FACING REAR GARDEN, UNDERHOUSE GARAGE, VIEWS, CUL-DE-SAC, VIEWING ADVISED, EPC RATING C **

FULL DESCRIPTION

Situated in an elevated position at the upper end of a modern residential cul-de-sac, this four bedroom semi-detached property is well worthy of an internal viewing to fully appreciate the accommodation on offer. This property may suit a growing family and has accommodation briefly comprising - Entrance Lobby, Cloaks/w.c., Spacious Ground Floor Bedroom with window to the front, Lounge with windows to the front, Dining Kitchen with a range of modern fitted wall and base units, integrated oven, hob, extractor hood, under counter fridge, plumb for washer, rear door, sliding patio doors from the dining area leading to a Conservatory with double glazed windows, glass roof and double doors leading to the rear garden, inner lobby with good sized storage cupboard, stairs to first floor. Landing with built in storage cupboard, Bedroom 1 can be found at the rear enjoying views over the garden and beyond, en-suite shower room with shower cubicle, w.c., wash hand basin, window to the rear, Bedroom 2 can be found at the front, Bedroom 3 is a good size with built in storage cupboard and window to the front. Gas central heating and double glazing. Outside - Front garden, steps leading up to the front door, driveway providing parking and giving access to the under house garage which has raised storage shelving. To the rear is a pleasant southerly facing garden mainly of lawn with borders, patio and water feature. EPC RATING C

Any floor plans are for guidance and illustrative purposes only. While we strive for accuracy, we cannot guarantee the precise layout, dimensions, or details shown. Any measurements or boundaries should be verified through the title deeds. We accept no liability for any loss or damage arising from reliance on this information.



Whilst every attempt has been made to ensure the accuracy of the floorplan contained here, measurements of doors, windows, rooms and any other items are approximate and no responsibility is taken for any error, omission or mis-statement. This plan is for illustrative purposes only and should be used as such by any prospective purchaser. The services, systems and appliances shown have not been tested and no guarantee as to their operability or efficiency can be given.
Made with Metropix 6/2026