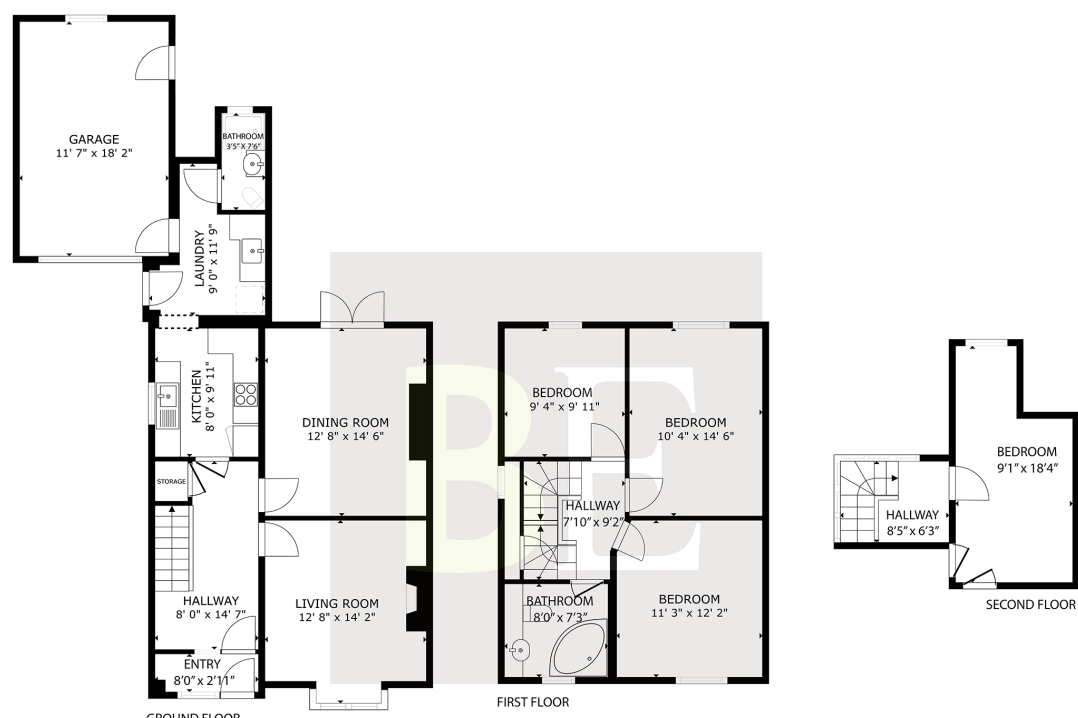




BenestEstates
OPENING DOORS FOR YOU



GROSS INTERNAL AREA
GROUND FLOOR: 705 sq. ft, FIRST FLOOR: 539 sq. ft, SECOND FLOOR: 198 sq. ft
TOTAL: 1442 sq. ft
EXCLUDED AREAS: GARAGE: 210 sq. ft
SIZES AND DIMENSIONS ARE APPROXIMATE, ACTUAL MAY VARY



9 EARTHWORKS, LA RUE DE PODETRE, ST HELIER, JERSEY, CHANNEL ISLANDS. JE2 3HE

Offers in Excess of
£899,950
Freehold

ABOUT THE PROPERTY

Beautifully maintained 4 bedroom house with additional study located in a convenient yet quiet area on the outskirts of St Helier. This spacious 1450ft² house boasts a separate dining, kitchen and reception room seamlessly connected by a bright, airy entrance hall. The property has been extended at the rear, adding a utility room, downstairs shower room and an integral garage door with capacity to extend further subject to planning permission. The garden has been completely redone to an incredibly high standard and is large enough to receive sunlight for the majority of the day. Complete with large storage shed.

Upon reaching the first floor, you will meet 2 spacious double bedrooms (each with a green outlook), a single bedroom/study and a well appointed house bathroom. The property benefits from an additional extension into the roof space adding a 4th bedroom.

Close to all amenities and walking distance from schools, parking for 3 (plus garage) and additional roadside parking, this property is an ideal family home. Viewing highly recommended.

FEATURES

- 4 bed 2 bath family home
- Garage & parking for 3
- Large rear garden
- Outskirts of town, close to all amenities
- Open aspect
- Quiet location, nearby to schools

