



7 Thie Voirrey, Douglas Road, Ballasalla, Isle of Man. IM9 2EQ

Well presented end terraced cottage with secret garden and deceptive accommodation



£325,000 Freehold

PROPERTY DESCRIPTION

Manxmove are pleased to bring to market, Thie Voirrey. This superb extended property is presented in excellent order throughout and offers deceptive accommodation stretching over 1,200 sqft. On the ground floor there is a large lounge with cast iron open fire, perfect for the winter evenings. Off the lounge there is spacious dining kitchen which opens into a large glass conservatory with underfloor heating. There is also a downstairs toilet for convenience.

Upstairs you will find three bedrooms accompanied by a modern three piece bathroom. The main bedroom benefits from fitted wardrobes and lovely views over the rear garden.

Externally, there is a large walled garden which is well established. There is a fruit bearing apple tree, large glass greenhouse, and small patio area.

Internal inspection is essential to appreciate this beautiful home.

FEATURES

- Superb End Terraced Cottage
- Deceptively Spacious Accommodation
- Secret Garden to Rear
- Large Lounge plus Modern Kitchen/Diner
- Impressive Conservatory
- 3 Bedrooms plus Modern Bathroom
- Close to School, Shops and Doctors



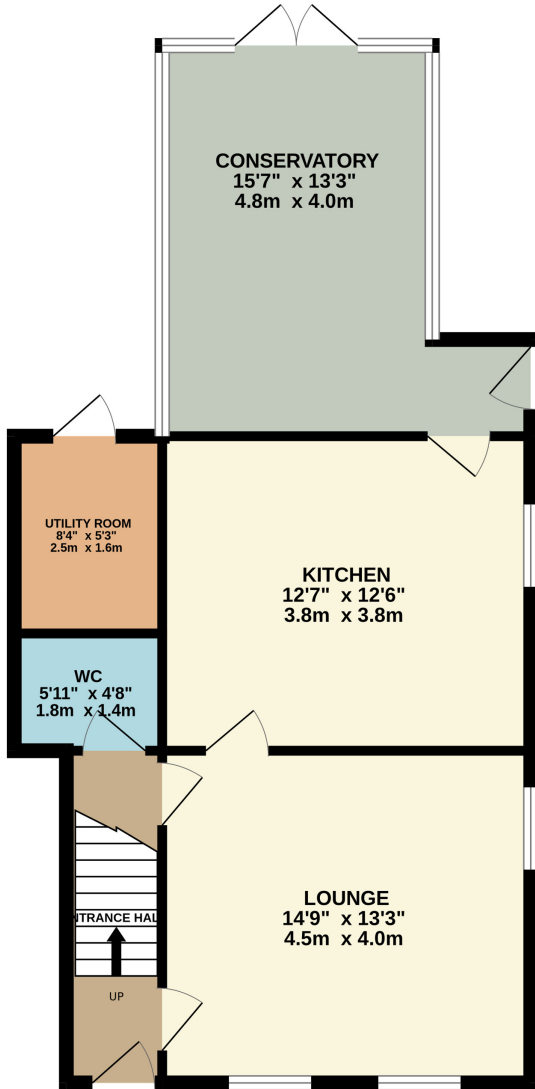
Property Images



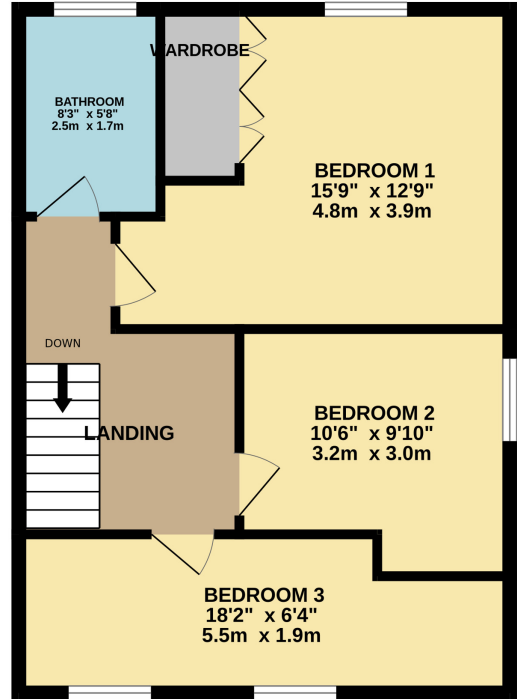
FLOORPLAN



GROUND FLOOR
688 sq.ft. (64.0 sq.m.) approx.



1ST FLOOR
535 sq.ft. (49.7 sq.m.) approx.



TOTAL FLOOR AREA: 1224 sq.ft. (113.7 sq.m.) approx.

Whilst every attempt has been made to ensure the accuracy of the floorplan contained here, measurements of doors, windows, rooms and any other items are approximate and no responsibility is taken for any error, omission or mis-statement. This plan is for illustrative purposes only and should be used as such by any prospective purchaser. The services, systems and appliances shown have not been tested and no guarantee as to their operability or efficiency can be given.
Made with Metropix ©2024



DISCLAIMER: Whilst Manxmove Ltd believe that these details are correct, neither Manxmove Ltd or their clients guarantee their accuracy in any way. Consequently, these details are not to be used to form part of any legally binding contract. Prospective purchasers or tenants are advised to visit this property to satisfy themselves as to the correctness of these details. Please note, we use wide angle camera lenses in order to show as much of each room as possible. This is not intended to mislead any prospective purchasers or tenants in any way and an honest verbal description is always available prior to viewing if required.