



27 Blackberry Farm Close
Hounslow, TW5 9EH



Telephone: 02085707900
Email: info@blueestateagents.co.uk



Blackberry Farm Close

Hounslow, TW5 9EH

Blue Estate Agents bring to the market this two bedroom first floor maisonette in need of modernisation and a low lease. Property offers a reception room, kitchen, two double bedrooms and a family bathroom suite. Double glazed and gas central heated, external garage, rear private garden and parking available. Loft storage space and scope to further extend subject to planning permission being permitted. Located on a cul-de-sac in Heston giving close access to public transport links and Hounslow West Tube Station 10 minutes drive away, close commute to Heathrow and M4/A4. The property sits a stone's throw away from Springwell Infant & Nursery School and Berkeley Primary School as well as Bus links to Hounslow West Underground Station and London Heathrow Airport. Also, conveniently located within walking distance to many local shops and restaurants on Vicarage Farm Road as well as the A4/ M4 providing links into The City and neighbouring towns.

Council Tax Band - C - £1577,00 Per Annum - London Borough Of Hounslow

Leasehold Property - Lease Remaining - 133 Years (Advised By Vendor)



Blue Estate Agents
.co.uk

Blue Estate Agents
.co.uk



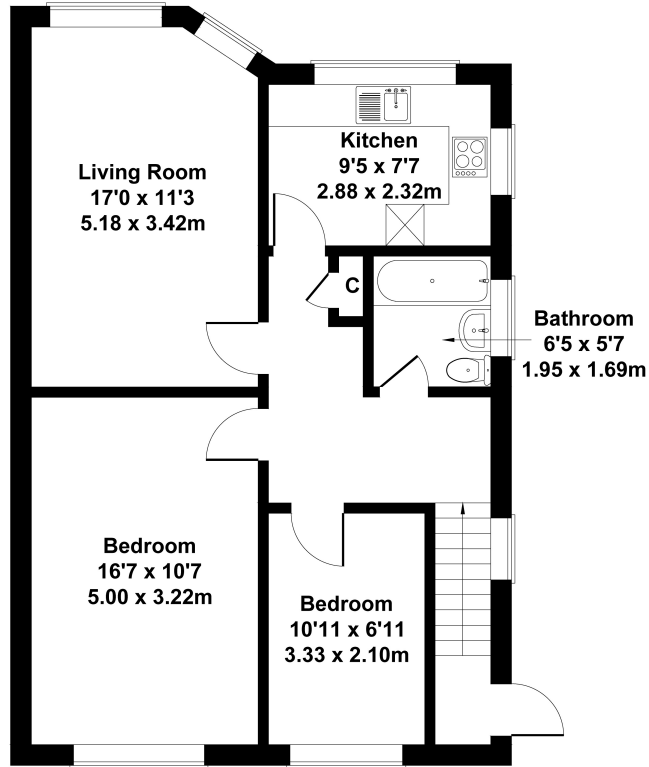
Blue Estate Agents
.co.uk



Blue Estate Agents
.co.uk

Blackberry Farm Close, Heston, Hounslow, TW5 9EH

Approximate Gross Internal Area
700 sq ft - 65 sq m



FIRST FLOOR

Not to Scale. Produced by The Plan Portal 2024
For Illustrative Purposes Only.



Blue Estate Agents
315 Vicarage Farm Road, Hounslow
Greater London
TW5 0DR