



**64 Petersfield Road, Staines-upon-Thames, Surrey. TW18 1DL.**

**3 Bedroom Terraced House - £375,000 Freehold**



# 64 Petersfield Road, Staines-upon-Thames, Surrey. TW18 1DL.

01784 451458

## 3 Bedroom Terraced House - £375,000 Freehold

SPACIOUS THREE BEDROOM PROPERTY SITUATED ALONG THIS MUCH SOUGHT AFTER ROAD IDEALLY LOCATED FOR EASY ACCESS TO STAINES TOWN CENTRE, MAINLINE TRAIN STATION, LOCAL SHOPS & SCHOOLS. The property is in need of updating throughout but currently benefits from a spacious lounge/diner, separate fitted kitchen, three well-proportioned bedrooms, bathroom, large secluded rear garden and off-street parking. No Onward Chain. Viewings Highly Recommended!

### Key Features

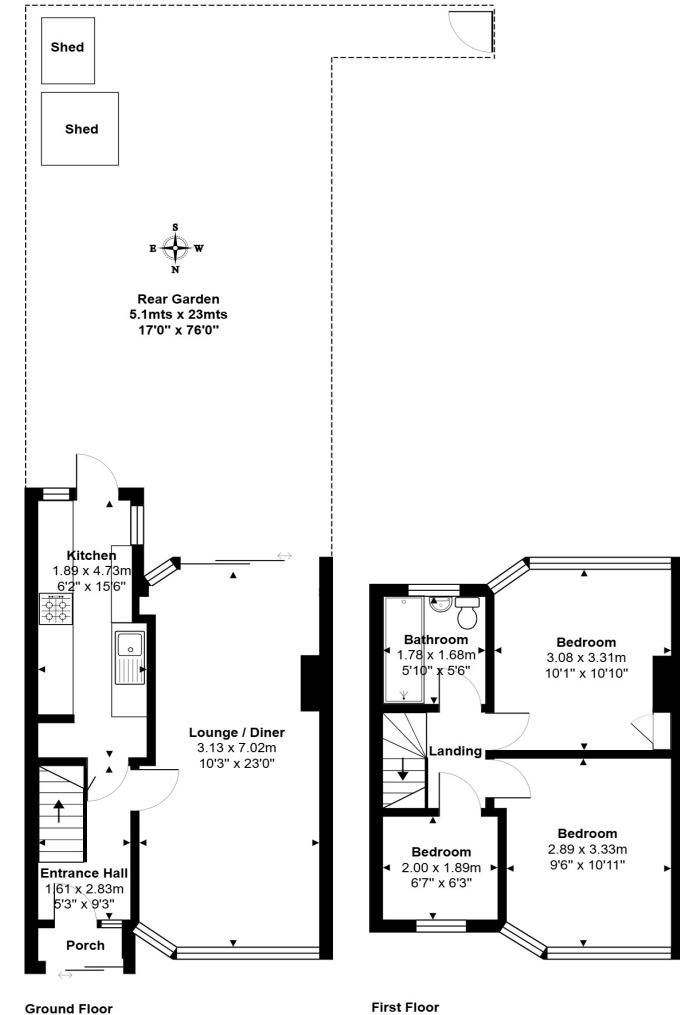
SPACIOUS THREE BEDROOM

OFF-STREET PARKING

CLOSE TO TOWN CENTRE & MAINLINE TRAIN STATION

GREAT SCOPE FOR ALTERATION/EXTENSION (S.T.R.P.P)

NO ONWARD CHAIN



Total Area: 68.4 m<sup>2</sup> ... 736 ft<sup>2</sup>  
All measurements are approximate and for display purposes only.



**GREGORY BROWN**  
RESIDENTIAL SALES & LETTINGS





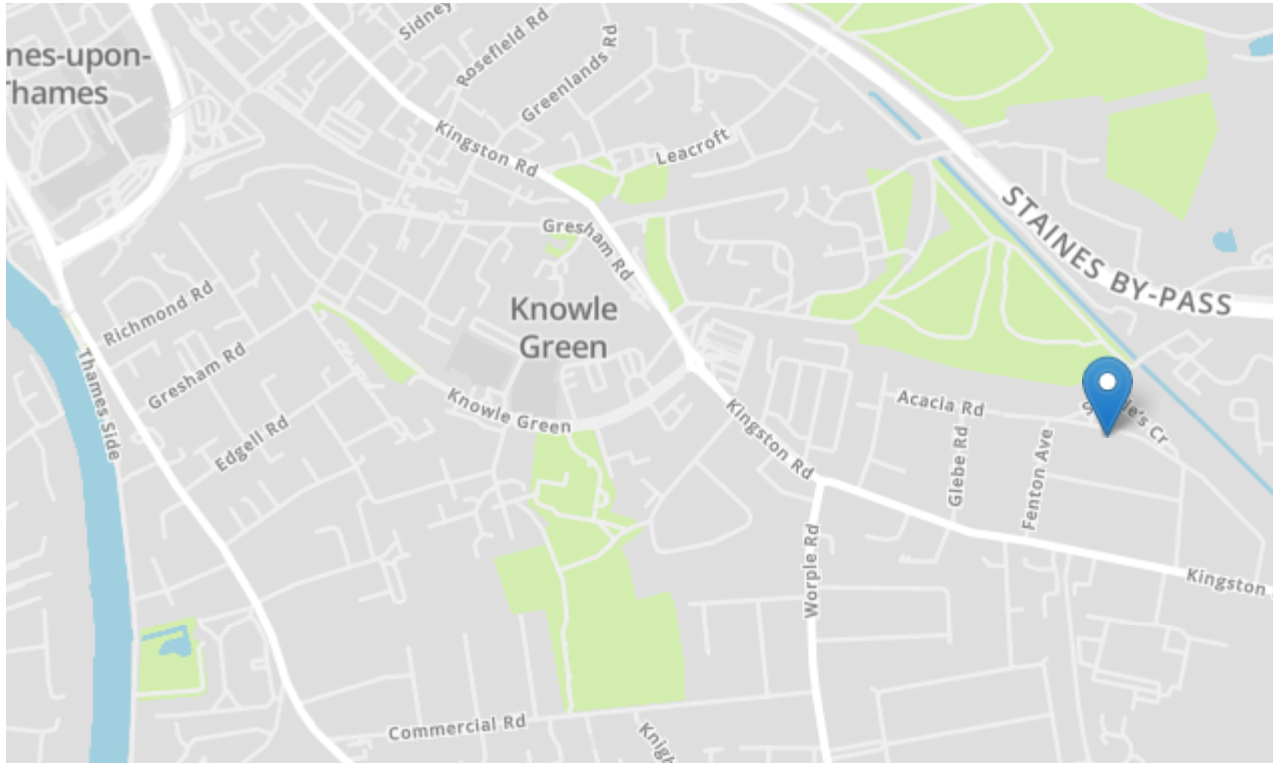






# 64 Petersfield Road, Staines-upon-Thames, Surrey. TW18 1DL.

[gregory-brown.co.uk](http://gregory-brown.co.uk)



Tenure **Freehold**

Lease Term

Ground Rent

Service Charge

Local Authority

Council Tax

We have prepared these property particulars as a general guide to a broad description of the property. They are not intended to constitute part of an offer or contract. We have not carried out a structural survey and the services, appliances and specific fittings have not been tested. All photographs, measurements, floorplans and distances referred to are given as a guide only and should not be relied upon for the purchase of carpets or any other fixtures or fittings. Lease details, service charges and ground rents (where applicable) and council tax are given as a guide only and should be checked and confirmed by your solicitor prior to exchange of contracts. The copyright of all details, photographs and floorplans remain exclusive to Gregory Brown.

