



9 Whittle Court,  
Knowlhill, Milton Keynes, MK5 8FT

Tel: 01908 231 551



mail@elevationstateagents.com



**3 Farm Court, Shenley Brook End, Milton  
Keynes, Buckinghamshire, MK5 7GY**

**£995,000 Freehold**

- Enclosed, low maintenance rear garden
- Executive detached family home
- Six double bedrooms
- Underfloor Heating Throughout
- Four Bathrooms
- Desirable location
- Kitchen/dining room with Neff appliances
- 3182 sqft
- EPC Rating



See our full selection of properties online at [www.elevationstateagents.com](http://www.elevationstateagents.com)





## **GROUND FLOOR**

### **Entrance Hall**

Doors leading to:

### **Downstairs Cloakroom**

Fitted to comprise two piece suite

### **Kitchen Dining Room**

### **Family Room**

### **Study**

### **Lounge**



## **FIRST FLOOR**

### **Landing**

Doors leading to

### **Bedroom One**

### **En-Suite**

Fitted to comprise three piece suite

### **Bedroom Two**

### **En-Suite**

Fitted to comprise three piece suite

### **Bedroom Three**

### **Bedroom Four**

### **Family Bathroom**

Fitted to comprise three piece suite



## **SECOND FLOOR**

### **Landing**

Doors leading to:

### **Bedroom Five**

### **Bedroom Six**

### **Shower Room**

Fitted to comprise three piece suite



## **EXTERIOR**

### **Rear and Front Garden**

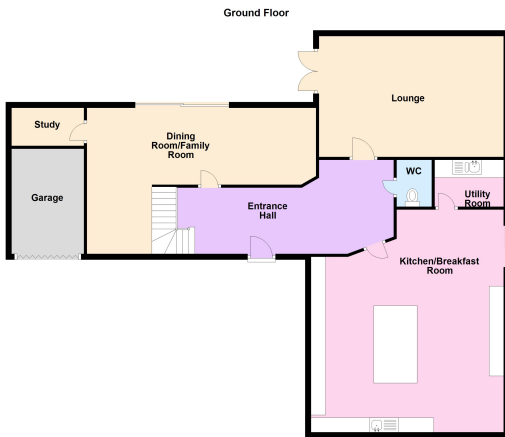
### **Single Garage**

## Off Road Parking

Space for several vehicles

## Disclaimer

Whilst we have endeavoured to prepare our sales particulars accurately none of the services, appliances or equipment have been tested. A buyer should satisfy themselves on such matters prior to purchase. Any measurements or distances mentioned in these particulars are for guide reference only. If such particulars are fundamental to a purchase, buyers should rely on their own enquiries. All enquiries should be directed to Elevation Estate Agents in the first instance.



Floor plans are for layout purposes only. Measurements are approximate and subject to inaccuracies.  
Plan produced using PlanIt.