

REDUCED

£279,950 Share of Freehold



## Woodside Lane, Woodside Park, N12 8RB

- Bedroom
- Shower Room
- Kitchen/Reception
- 0.6 Miles to Tube Station
- Share of Freehold
- Chain Free
- Council Tax Band B
- Long Lease (+110 years)
- Sole service charge of £34 to sinking fund pcm





## PROPERTY DESCRIPTION

---

A well-presented one bedroom flat in a period house conversion, conveniently located for North Finchley's shopping and transport amenities and within 0.6 miles to Woodside Park (Northern Line) tube station. Offered chain free with share of freehold.



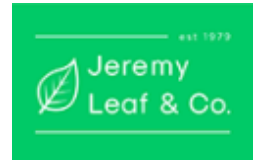
## ROOM DESCRIPTIONS

---

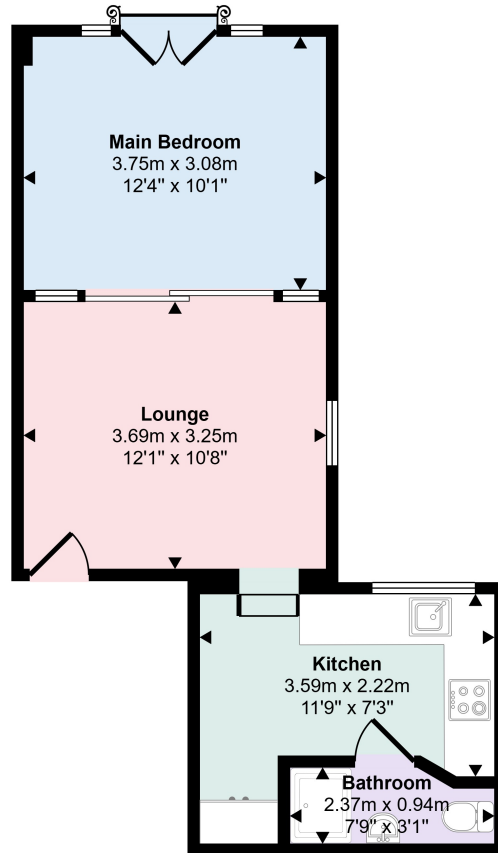




# FLOORPLAN & EPC

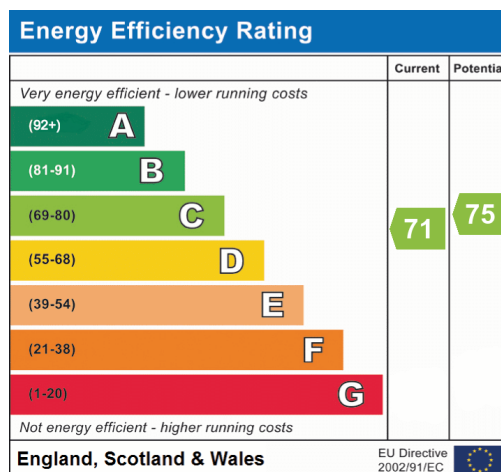


Approx Gross Internal Area  
35 sq m / 381 sq ft



First Floorplan

This floorplan is only for illustrative purposes and is not to scale. Measurements of rooms, doors, windows, and any items are approximate and no responsibility is taken for any error, omission or mis-statement. Icons of items such as bathroom suites are representations only and may not look like the real items. Made with Made Snappy 360.



North Finchley  
863, High Road, London, N12 8PT  
020 8446 4295  
property@jeremyleaf.co.uk