



28 Saltdean Way, Bexhill-on-Sea, East
Sussex, TN39 3SS

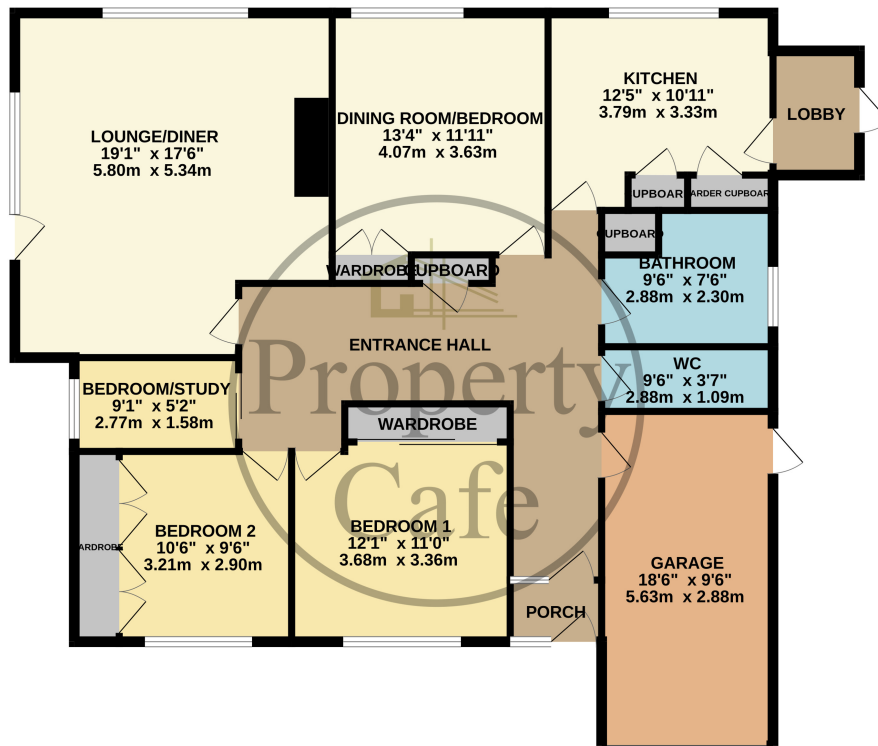
£550,000



- Four Bedroom Detached Bungalow For Sale
- Potential To Extend & Improve (subject to planning)
- Spacious Lounge/Diner With Southerly Aspect
- Bathroom & Separate WC
- South Facing Rear Garden
- Single Garage & Off-Road Parking
- Ample Storage Throughout
- Sought After Cooden Location
- Sold With No Onward Chain
- Viewing Highly Recommended.



GROUND FLOOR
1480 sq.ft. (137.5 sq.m.) approx.



TOTAL FLOOR AREA : 1480 sq.ft. (137.5 sq.m.) approx.

Whilst every attempt has been made to ensure the accuracy of the floorplan contained here, measurements of doors, windows, rooms and any other items are approximate and no responsibility is taken for any error, omission or mis-statement. This plan is for illustrative purposes only and should be used as such by any prospective purchaser. The services, systems and appliances shown have not been tested and no guarantee as to their operability or efficiency can be given.
Made with Metropix 03/2024