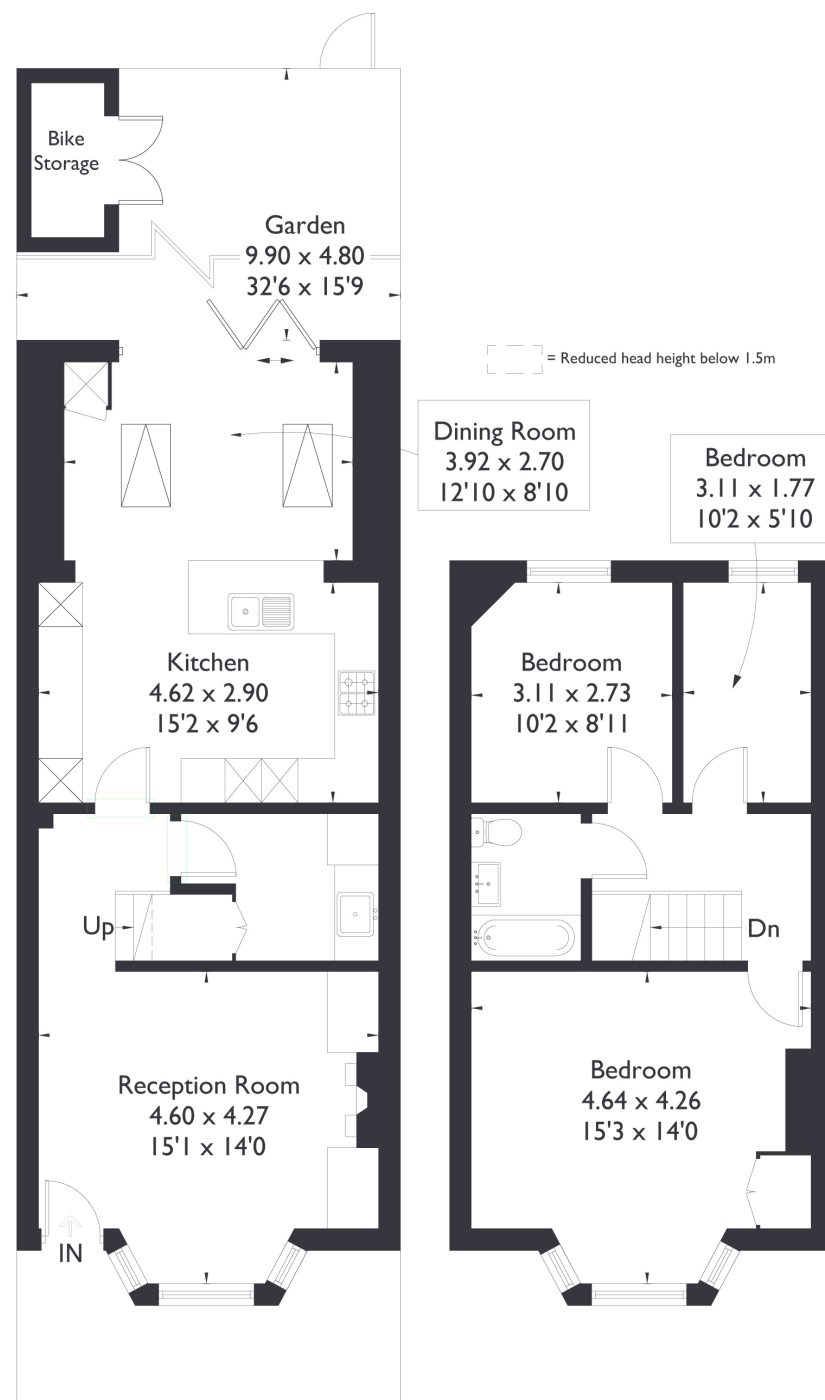


Regina Terrace, W13

Approximate Floor Area = 97 sq m / 1044 sq ft
Outbuilding = 2.1 sq m / 23 sq ft
Total = 99.1 sq m / 1067 sq ft



Ground Floor

First Floor



3 BEDROOM HOUSE

Regina Terrace, W13 £895,000

Welcome to this stunning three bedroom terraced home, perfectly situated in the heart of Ealing.

Upon entering, you're welcomed by a beautifully presented reception room featuring original wooden flooring and a stunning bay window that fills the space with natural light.

FEATURES

- Three Bedrooms
- One Bathrooms/Dowstairs W/C/Utility Room
- Open Plan Kitchen/Dining Room
- West Ealing Station (Elizabeth Line 10 min walk)
- St Johns Primary School (Ofsted Outstanding)
- EPC Rating C



3 BEDROOM HOUSE

Regina Terrace, W13

Towards the rear of the property, a stylish utility room and guest W/C lead you through to a spacious open plan kitchen and living area. This modern, light-filled space opens up to a beautifully maintained garden through elegant bi-fold doors, creating a seamless indoor-outdoor living experience, perfect for entertaining or relaxing in the sun.

Upstairs, you'll find two generous double bedrooms, a comfortable single bedroom, and a contemporary family bathroom. There is also the exciting potential to extend into the loft (subject to planning permission), offering scope to tailor the home to your needs.

Located within the catchment area for the Ofsted-rated 'Outstanding' St John's Primary School, this property is also just a 10-minute walk from West Ealing station, providing swift links into Central London. You'll also enjoy easy access to Northfields' amenities and excellent transport connections via the Great West Road. EPC Rating C.

