

Jack Taggart & Co

RESIDENTIAL SALES

**ADELAIDE CRESCENT, BN3 2JH**

**£650,000**

# ADELAIDE CRESCENT, BN3 2JH

Jack Taggart and Co are delighted to introduce to the market this expansive three-bedroom apartment. Adelaide Crescent was constructed during the Victorian era, having been home to many prestigious residents over the years. The crescent is designed in the stucco style and boasts enviable views of Adelaide Gardens and Hove seafront, maintaining its status as a highly sought-after address within Hove. For shopping, dining, and leisure, the bustling areas of Church Road, Western Road, George Street, and Blatchington Road offer a variety of options amidst iconic period architecture. Hove Lawns, Palmeira Square, and Adelaide Crescent provide ample green spaces to unwind, while the beach and seafront are always nearby. Cricket enthusiasts will appreciate the proximity to the County Ground on Eaton Road. Hove's mainline station offers excellent commuter links to London and Gatwick, with frequent bus services connecting the city.

The open-plan layout seamlessly combines the living, dining, and kitchen areas, creating a bright and inviting atmosphere. The living room is cozy and welcoming, offering plenty of space for relaxation. The dining area, bathed in natural light, accommodates a large table, ideal for family meals or hosting. The modern kitchen is fitted with top-of-the-line appliances and shaker cabinets, offering a stylish and practical cooking area. Warm wooden flooring runs throughout the space, and a wall-mounted radiator provides year-round comfort. French doors open from the living room to a delightful courtyard, letting in ample sunlight and granting easy access to outdoor living.

This lovely home includes three generously sized bedrooms, two of which are charming double rooms, designed for both comfort and serenity. Plush carpeting in each bedroom enhances the cozy feel, while large windows allow natural light to fill the space, ensuring a bright and airy ambiance. This balance of comfort and elegance creates a perfect family retreat.

The bathroom is a bright and minimalist space, featuring marble-effect tiles and soft lighting. It includes a frameless glass shower with a rainfall head and a freestanding bathtub. Grey floor tiles add sophistication, while a heated towel rack brings additional comfort.

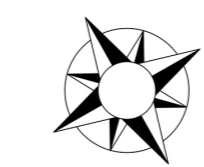
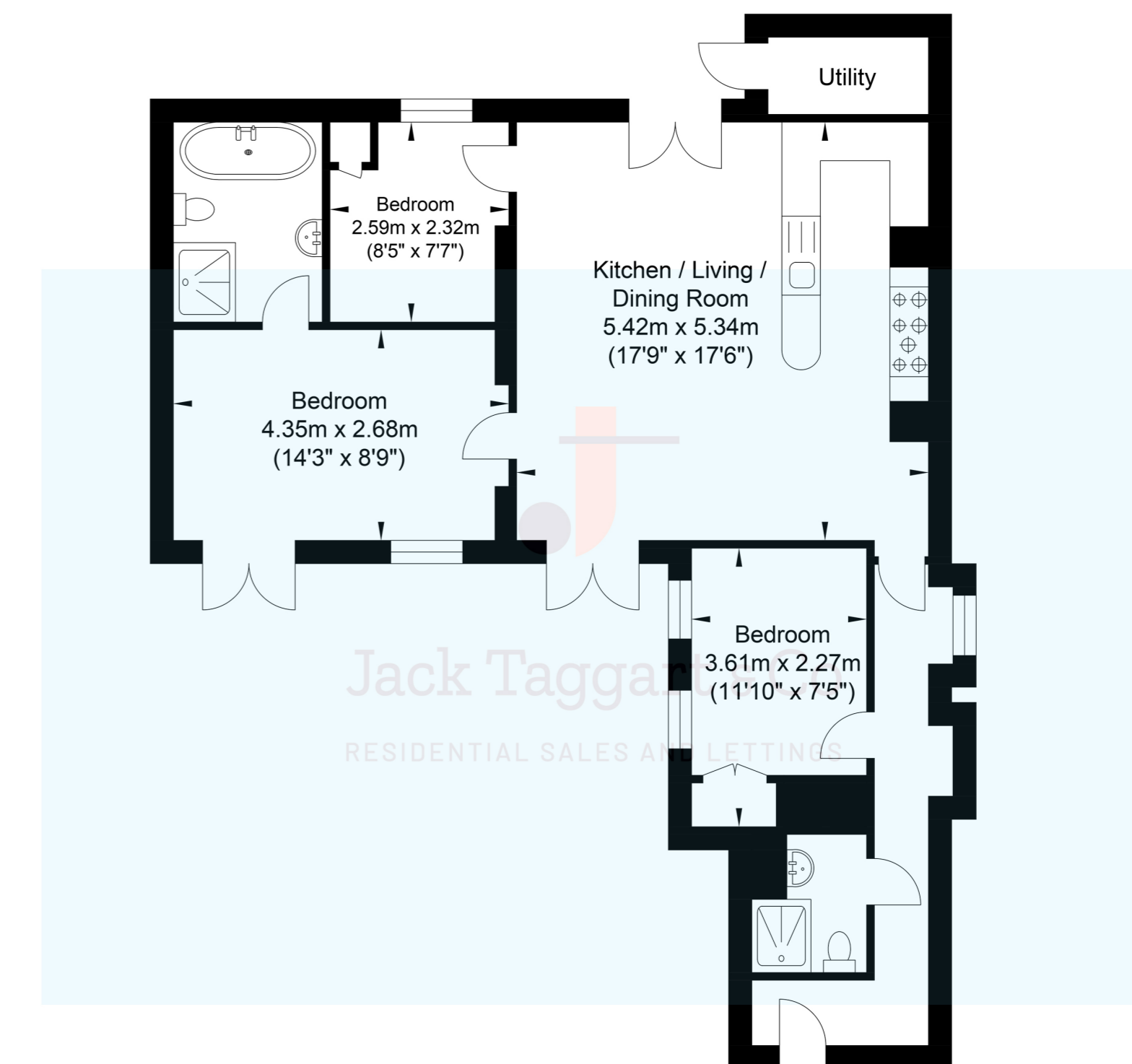
The shower room showcases a clean, contemporary design. The corner shower, enclosed by sleek glass doors, is adorned with light grey tiles, adding a touch of refinement. Adjacent to the shower is a pristine white toilet that complements the overall decor. To the right, a pedestal sink with a silver faucet sits beneath a mirrored cabinet, blending function and style.

The courtyard offers an excellent setting for gardening enthusiasts, families, or anyone looking to enjoy the outdoors in a well-maintained, beautiful environment.

Lease: 100 years TBC

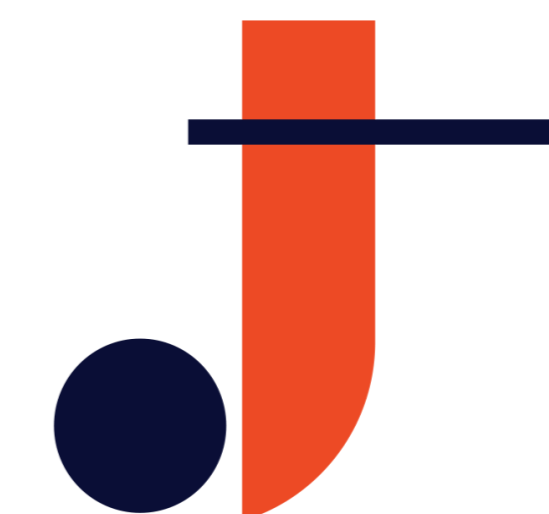
Maintenance £150pcm

## Adelaide Crescent



Lower Ground Floor  
Approximate Floor Area  
794.80 sq ft  
(73.84 sq m)

Approximate Gross Internal Area = 73.84 sq m / 794.80 sq ft  
Illustration for identification purposes only, measurements are approximate, not to scale.



# Jack Taggart & Co

RESIDENTIAL SALES