



KUBIE GOLD
ASSOCIATES

HAREWOOD AVENUE MARYLEBONE NW1



- LARGE ONE BED FLAT
- THIRD FLOOR - LIFT
- WOOD FLOOR THROUGHOUT
- 24 HOUR PORTERED BLOCK
- NEWLY DECORATED THROUGHOUT
- AVAILABLE IMMEDIATELY

£595 per week

SALES, LETTINGS & PROPERTY MANAGEMENT

Tel:

020 7563 7272

36 Ivor, Regents Park, London, NW1 6EA

Email: info@kubie-gold.co.uk Website: www.kubie-gold.co.uk

Kubie Gold Associates is the trading name of Kubie Gold Associates Ltd
Company Registration No. 7271501 registered in England and Wales

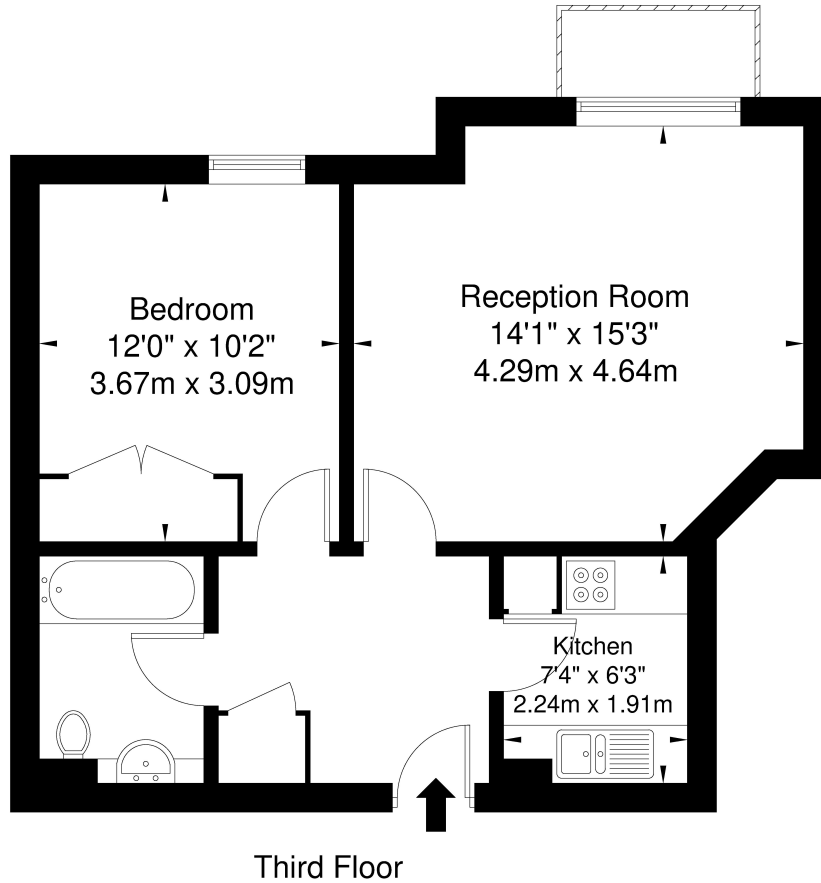


Harewood Avenue, NW1

Newly decorated throughout one bedroom apartment in popular portered block. good size reception with wooden floors, double bedroom with fitted wardobes givin ample storage, separate fully fitted kitchen, full family bathroom, brand new contemporary stylish furnishings, property benefits from secure 24 hour concierge, set on the third floor with a lift, situated very near to the open spaces of Regents Park and both Marylebone and Baker Street Tube Stations, available immediately.

Waterdale Manor House Harewood Avenue NW1 6JX

Approx. Gross Internal Area = 47.2 sq m / 508 sq ft



Ref

Copyright

**BLEU
PLAN**

The Floor plan is not to scale and measurements and areas shown are approximate and therefore should be used for illustrative purposes only. The plan has been prepared in accordance with the RICS code of Measuring Practice and whilst we have confidence in the information produced it must not be relied on. If there is any aspect of particular importance, you should carry out or commission your own inspection of the property.
Copyright @ BLEUPLAN

Local Authority:

Westminster

Tax Band:

Band G

