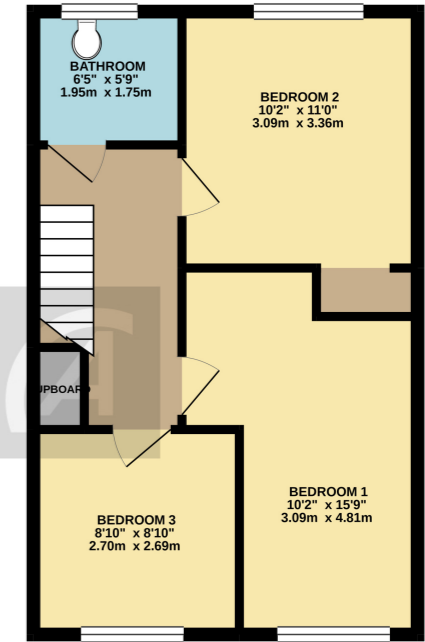
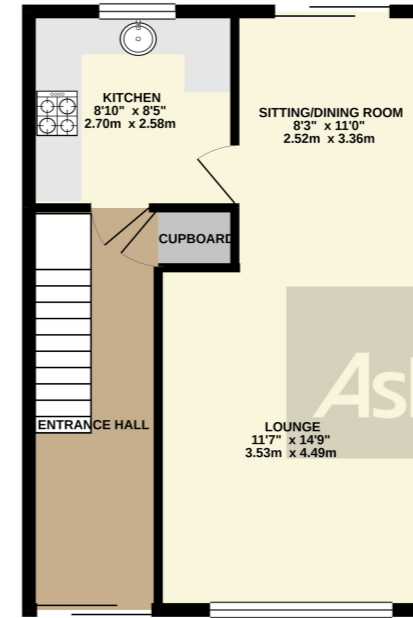




GROUND FLOOR
442 sq.ft. (41.0 sq.m.) approx.

1ST FLOOR
444 sq.ft. (41.2 sq.m.) approx.



TOTAL FLOOR AREA - 885 sq.ft. (82.2 sq.m.) approx.
Whilst every attempt has been made to ensure the accuracy of the floorplan contained herein, measurements of doors, windows, rooms and any other items are approximate and no responsibility is taken for any error, omission or mis-statement. This plan is for illustrative purposes only and should be used as such by any prospective purchaser. The services, systems and appliances shown have not been tested and no guarantee as to their operability or efficiency can be given.
Made with Metreplus ©2023

Oxmead Close, Padgate, Warrington. £160,000

THREE BEDROOMS | NEW DOUBLE GLAZING | POPULAR LOCATION | IDEAL PROPERTY TO MAKE YOUR OWN | NO ONWARDS CHAIN | SOLD AS SEEN |

