

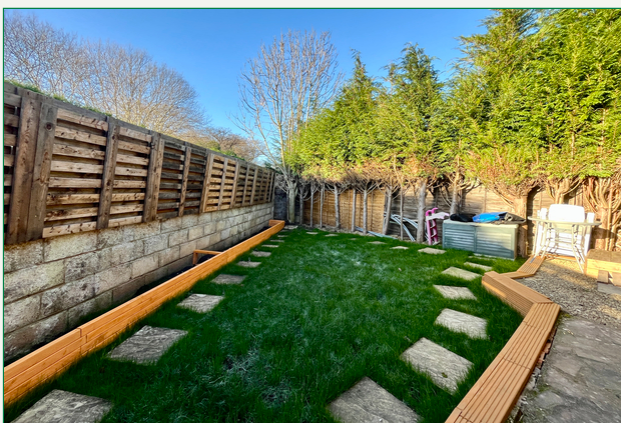
CHURCHILL MEADOW

£282,000

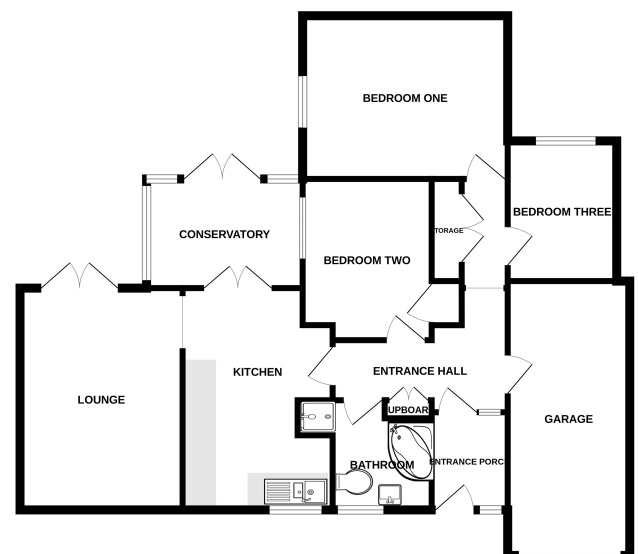


Key Features

- ✓ Three Bedrooms.
- ✓ Conservatory.
- ✓ Private Enclosed Garden.
- ✓ Garage and Off Road Parking.
- ✓ No Onward Chain.



GROUND FLOOR
988 sq.ft. (91.8 sq.m.) approx.



TOTAL FLOOR AREA: 988 sq.ft. (91.8 sq.m.) approx.
Made with Memphis 02/24