

6 Dura Way

Folkestone
CT20 3SF

£360,000 FREEHOLD

FOR SALE WITH BURNAP + ABEL... Set within a modern and highly desirable residential development, 6 Dura Way is an exceptional three-bedroom detached home, built circa 2018, offering contemporary elegance and effortless family living. The property welcomes you with a beautifully presented lounge, providing a comfortable and sophisticated space to relax. At the heart of the home is the open-plan kitchen and dining room, perfect for everyday family life and stylish entertaining, with direct access to the private rear garden. A convenient ground floor W.C. completes the layout. Upstairs, the home features three well-proportioned bedrooms, including a luxurious principal suite with a modern en-suite shower room. The remaining bedrooms are served by a stylish family bathroom, finished to a high standard. Externally, the property benefits from a private rear garden, ideal for outdoor dining and leisure, alongside a detached garage and off-road parking, offering both practicality and convenience. Combining modern construction, thoughtful design, and a peaceful residential setting, this superb home presents an outstanding opportunity for those seeking contemporary family living in Folkestone.



Entrance Hall

Lounge

13' 11" x 12' 2" (4.24m x 3.71m)

W.C

Kitchen/Dining Room

15' 6" x 9' 5" (4.72m x 2.87m)

First Floor Landing

Bedroom One

11' 1" x 9' 9" (3.38m x 2.97m)

En-Suite

Bedroom Two

10' 9" x 8' 8" (3.28m x 2.64m)

Bedroom Three

11' 7" x 6' 7" (3.53m x 2.01m)

Bathroom

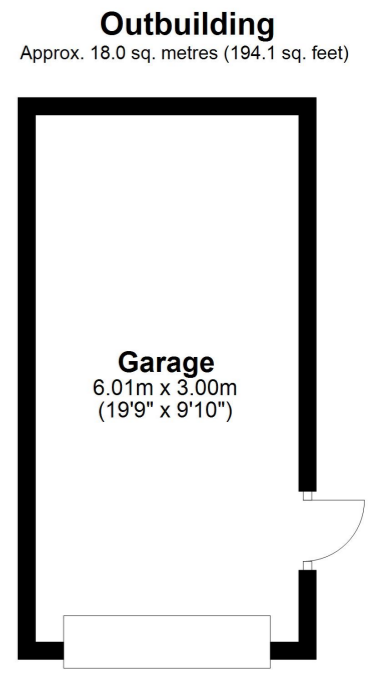
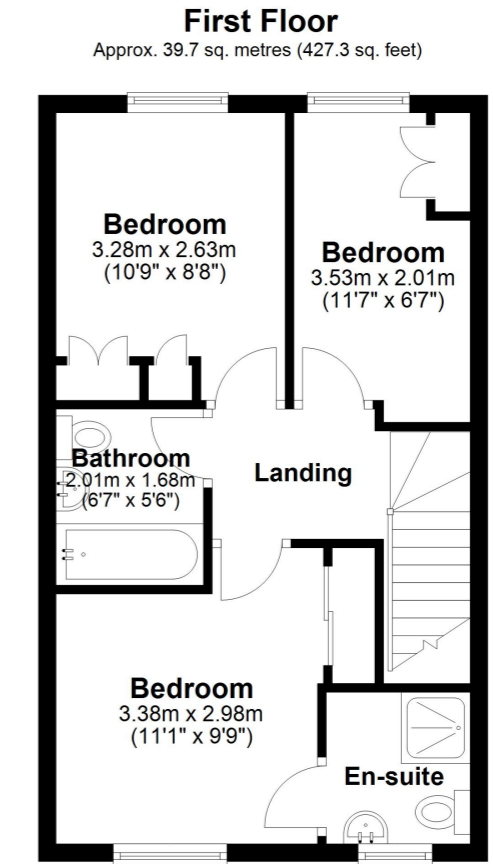
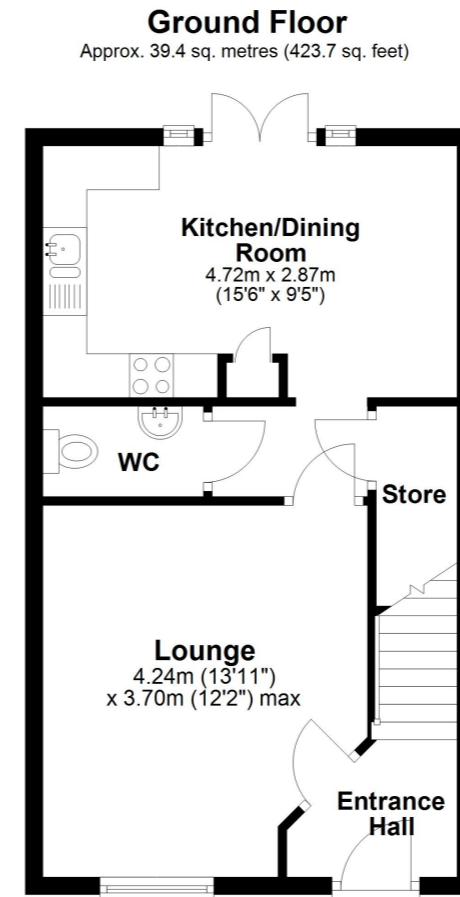
6' 7" x 5' 6" (2.01m x 1.68m)

Rear Garden

Off Road Parking

Garage

19' 9" x 9' 10" (6.02m x 3.00m)



Total area: approx. 97.1 sq. metres (1045.1 sq. feet)

