

THOMPSON PLACE, HR4

£265,000

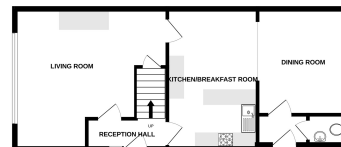


Key Features

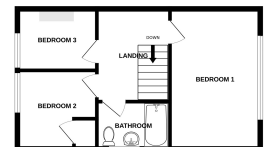
- ✓ Extended 3 bedroom semi detached property
- ✓ Gas central heating & double glazing
- ✓ Garage & ample off road parking
- ✓ Downstairs cloakroom
- ✓ No Onward Chain



GROUND FLOOR
540 sq.ft. (50.2 sq.m.) approx.



1ST FLOOR
395 sq.ft. (36.7 sq.m.) approx.



TOTAL FLOOR AREA: 935 sq.ft. (86.9 sq.m.) approx.
*Ask with Valuation - 01204