



OAKMERE CLOSE

EN6 5JQ





Freehold

£859,950

Accommodation

This stunning four bedroom family home is ideally located on this quiet cul-de-sac just moments from Potters Bar High Street with its array of shops and restaurants. The property benefits from Lounge to front, dining room to rear with sliding doors out on to the garden, a downstairs office and recently fitted modern kitchen with integrated appliances, breakfast room and downstairs toilet. The first floor features two large double bedrooms and a single bedroom, and a recently remodelled family bathroom with his and her sinks. The loft has been converted and boasts a large master bedroom with Juliette balcony and shower room.

Externally the property has off street parking for three vehicles and a superb private rear garden with patio area to rear of the house, lawn and patio to the rear.

Viewing advised / Chain Free

OAKMERE CLOSE, POTTERS BAR. EN6 5JQ



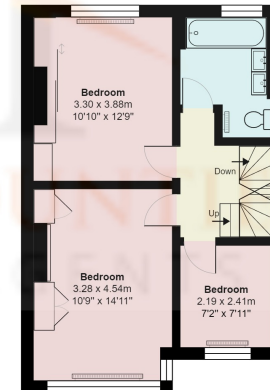
OAKMERE CLOSE, POTTERS BAR. EN6 5JQ



Second Floor
Area: 28.7 m² ... 309 ft²



Ground Floor
Area: 74.2 m² ... 799 ft²



First Floor
Area: 46.5 m² ... 501 ft²

Oakmere Close, Hertfordshire EN6

Total Area: 149.4 m² ... 1608 ft²
All measurements are approximate and for display purposes only

IMPORTANT: we would like to inform prospective purchasers that these sales particulars have been prepared as a general guide only. A detailed survey has not been carried out, nor the services, appliances and fittings tested. Room sizes should not be relied upon for furnishing purposes and are approximate. If floor plans are included, they are for guidance only and may not be to scale. If there are any important matters likely to affect your decision to buy, please contact us before viewing the property.



108 High Street, Potters Bar, EN6 5AT

01707 245 555

info@home-counties.com

www.home-counties.com