



# Whitings Court

Whitings Court | Paynes Park | Hitchin | SG5 1EJ

[www.stonegate-estates.co.uk](http://www.stonegate-estates.co.uk)





# WHITINGS COURT

---

## Property Description

We are pleased to be able to bring to the market this well presented and sought after two double bed roomed retirement apartment.

Set in the ever popular Whiting's Court development and being placed in the heart of the town centre, this second floor apartment is ready to move into with no onward chain and newly fitted carpeting. The apartment boasts a fitted kitchen, a bathroom suite with a shower over, communal gardens and parking, a residents lounge and laundry facilities.

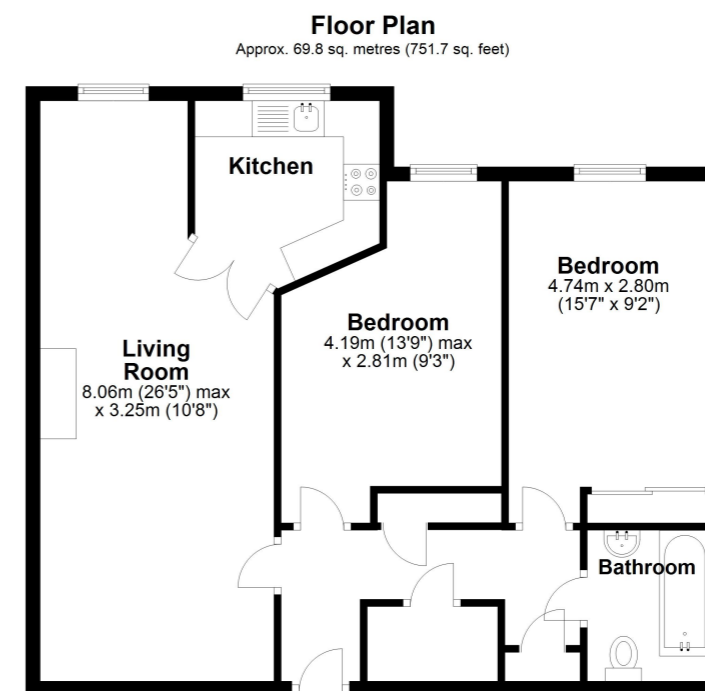
Viewing is strongly recommended to avoid missing.

Hitchin town centre provides a broad range of shops and a regular traditional market; together with a good selection of restaurants, bars and pubs within its historic centre. The town also provides a swimming centre, theatres and a library; whilst the commuter is served by the mainline railway station (Kings Cross – 30 minutes) and direct road links to the A1(M)

**£285,000 Leasehold**







Total area: approx. 69.8 sq. metres (751.7 sq. feet)

All measurements shown are approximate and for guidance only. Garages and workshops are not included in any gross floor areas unless integral to the main building where they will be included.  
Plan produced using PlanUp.





- Two Double Bedrooms
- Retirement Apartment
- Town Centre Location
- New Carpets Throughout
- Second Floor
- Communal Gardens and Parking
- Laundry Facilities
- Development Manager on Site

EPC Rating:

Stonegate Estate Agents

01462 438979

[sales@stonegate-estates.co.uk](mailto:sales@stonegate-estates.co.uk) | [www.stonegate-estates.co.uk](http://www.stonegate-estates.co.uk)

