



**Brewers Close
Lanivet
Bodmin
Cornwall
PL30**

Offers In Excess Of £325,000

bettermove

Brewers Close

Bodmin

A SPACIOUS semi-detached house in Lanivet. Call to enquire!

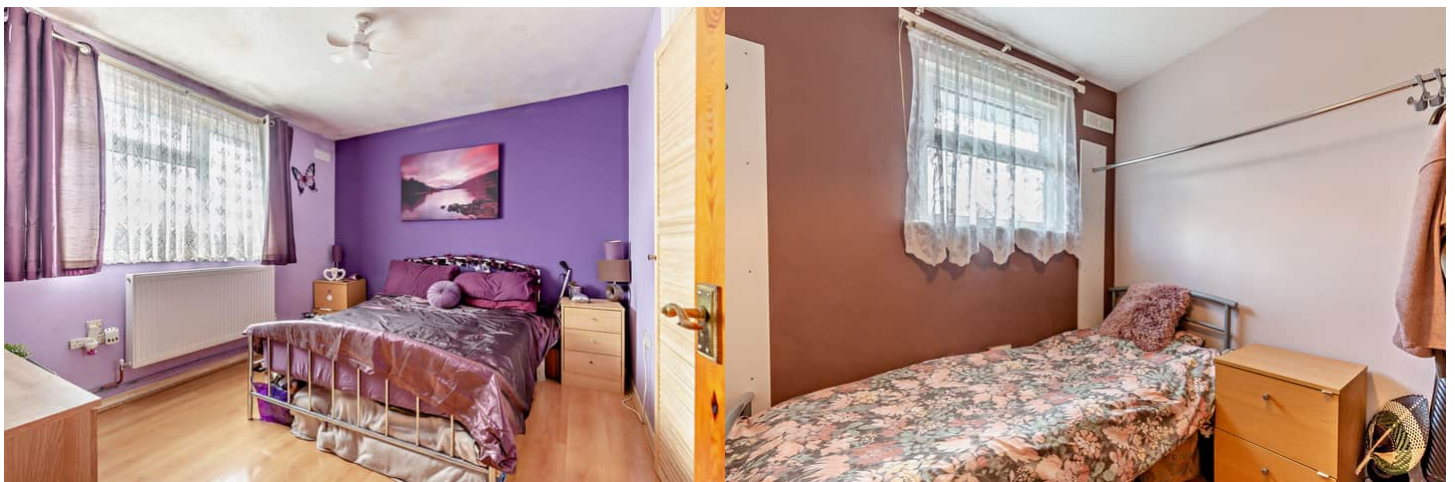
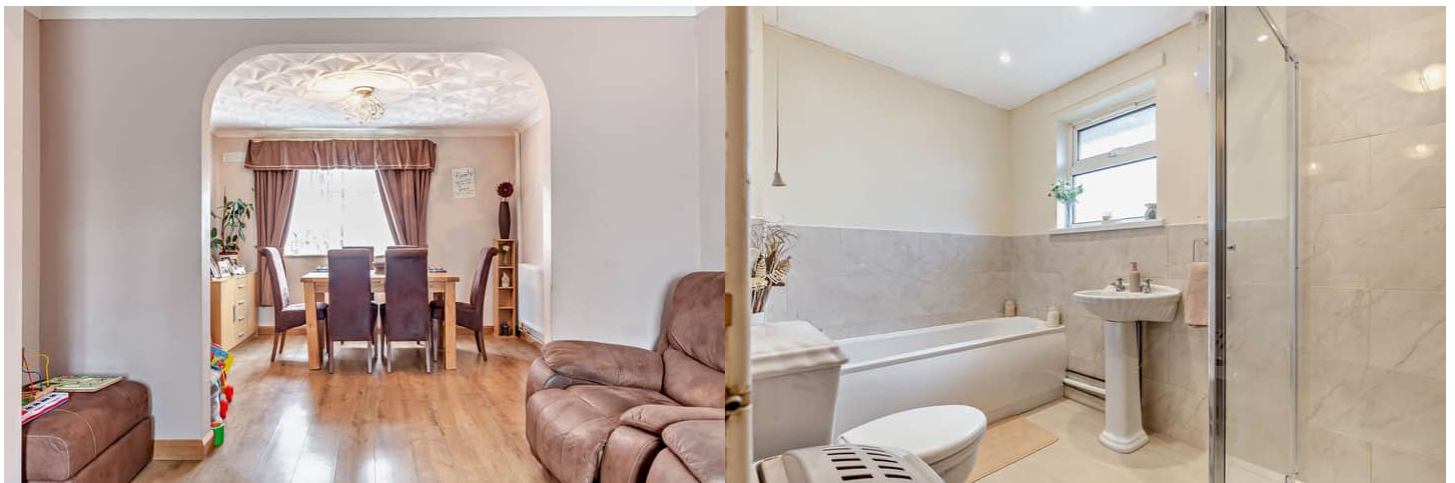
Bettermove are proud to present this 3 bedroom demi-detached house in Lanivet.

The property benefits from double glazing, air sourced heat pump and new radiators all around including it being solar installed, and has off communal parking.

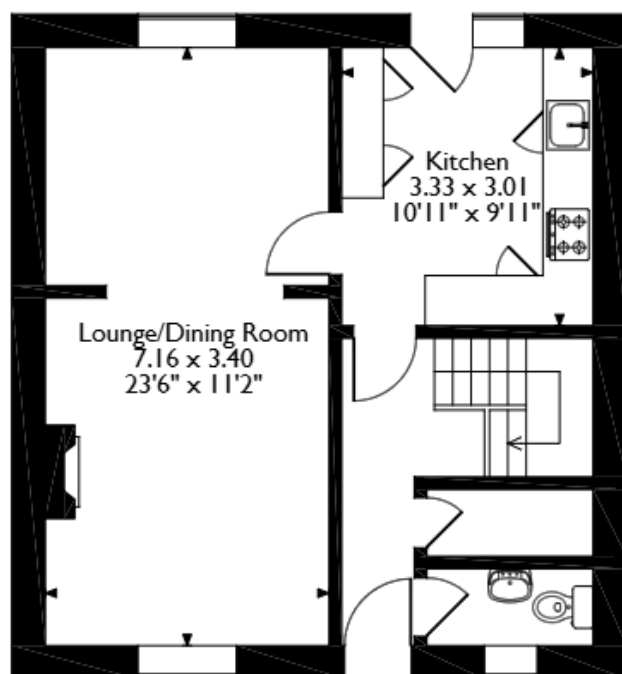
The council tax band is A.

The interior of this well presented property comprises a spacious living room, dining room and fitted kitchen on the ground floor. The first floor consists of 4 bedrooms and the newly refurbished family bathroom. The exterior boasts a private rear garden, perfect for enjoying the summer months.

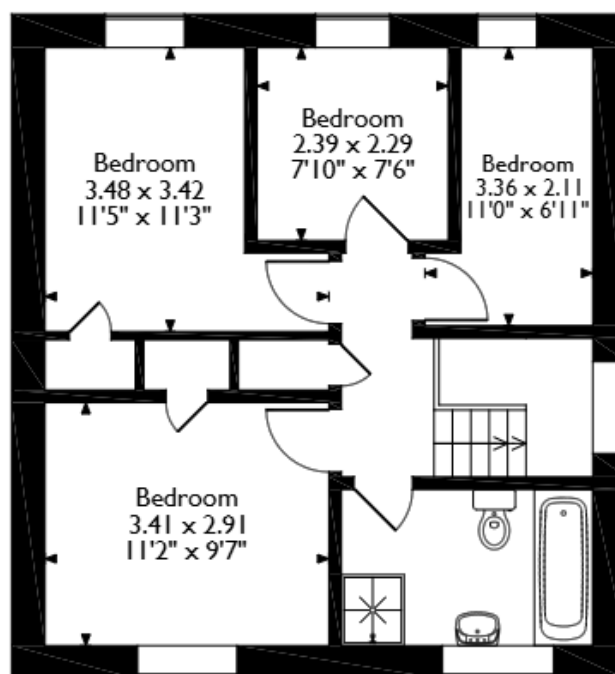
Located in the popular town of Lanivet, the property is close to a range of amenities, including shops, supermarkets, restaurants, pubs and schools. Excellent transport connections can be found from Bugle train station (4.7 miles), various bus routes and A30.



Brewers Close, Lanivet, Bodmin
Approximate Gross Internal Area
94 Sq M/1012 Sq Ft

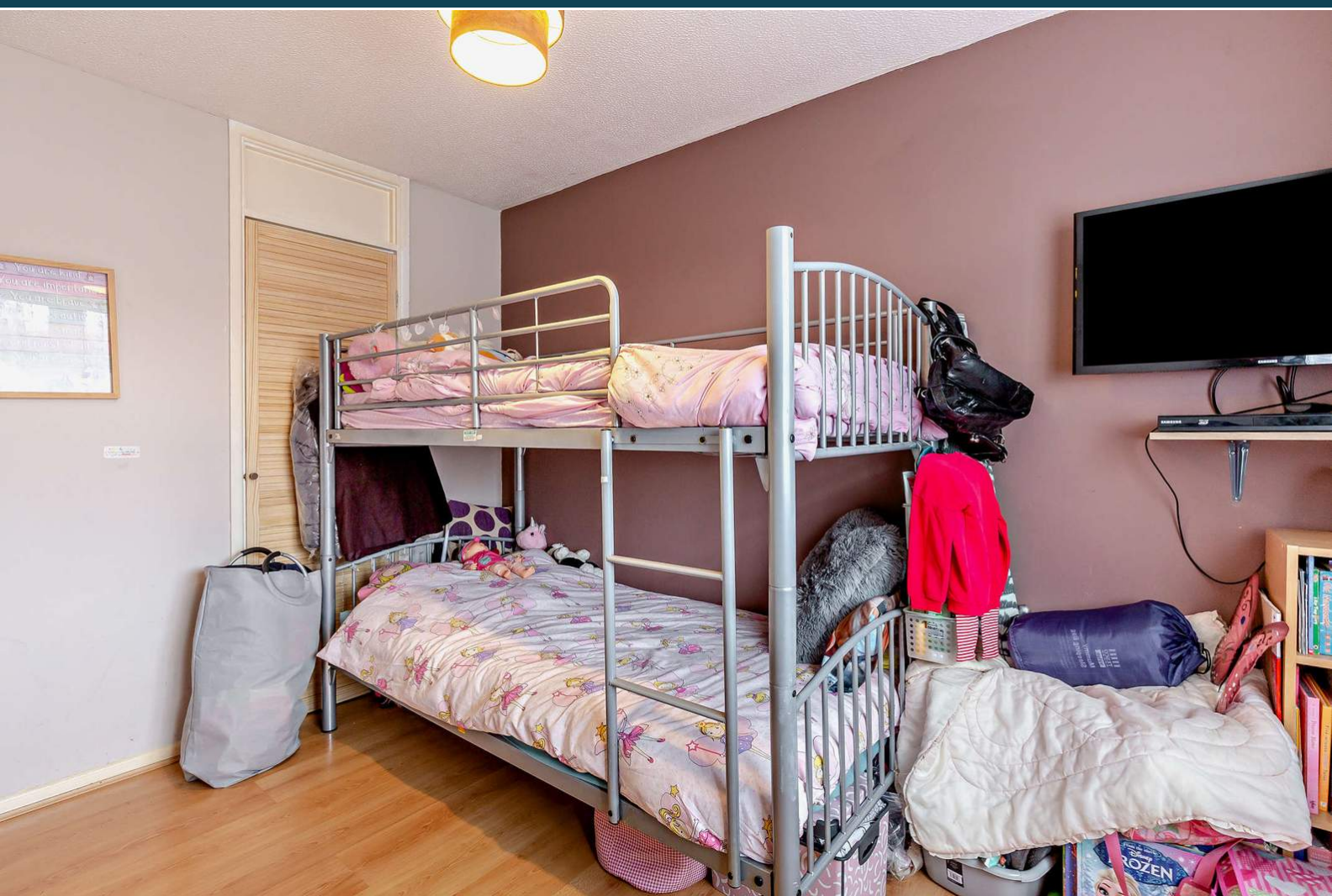


Ground Floor



First Floor

Please note that the location of doors, windows and other items are approximate and this floorplan is to be used for illustrative purposes only. Unauthorized reproduction is prohibited.



20-22 Bridge End, Leeds, LS1 4DJ
t: 0330 004 0050 e: hello@bettermove.co.uk
www.bettermove.co.uk

Please Note: These particulars, whilst believed to be accurate are set out as a general outline only for guidance and do not constitute any part of an offer or contract. Intending purchasers should not rely on them as statements of representations of fact, but must satisfy themselves by inspection or otherwise as to their accuracy. No person in this firm's employment has the authority to make or give any representation or warranty in respect of the property.