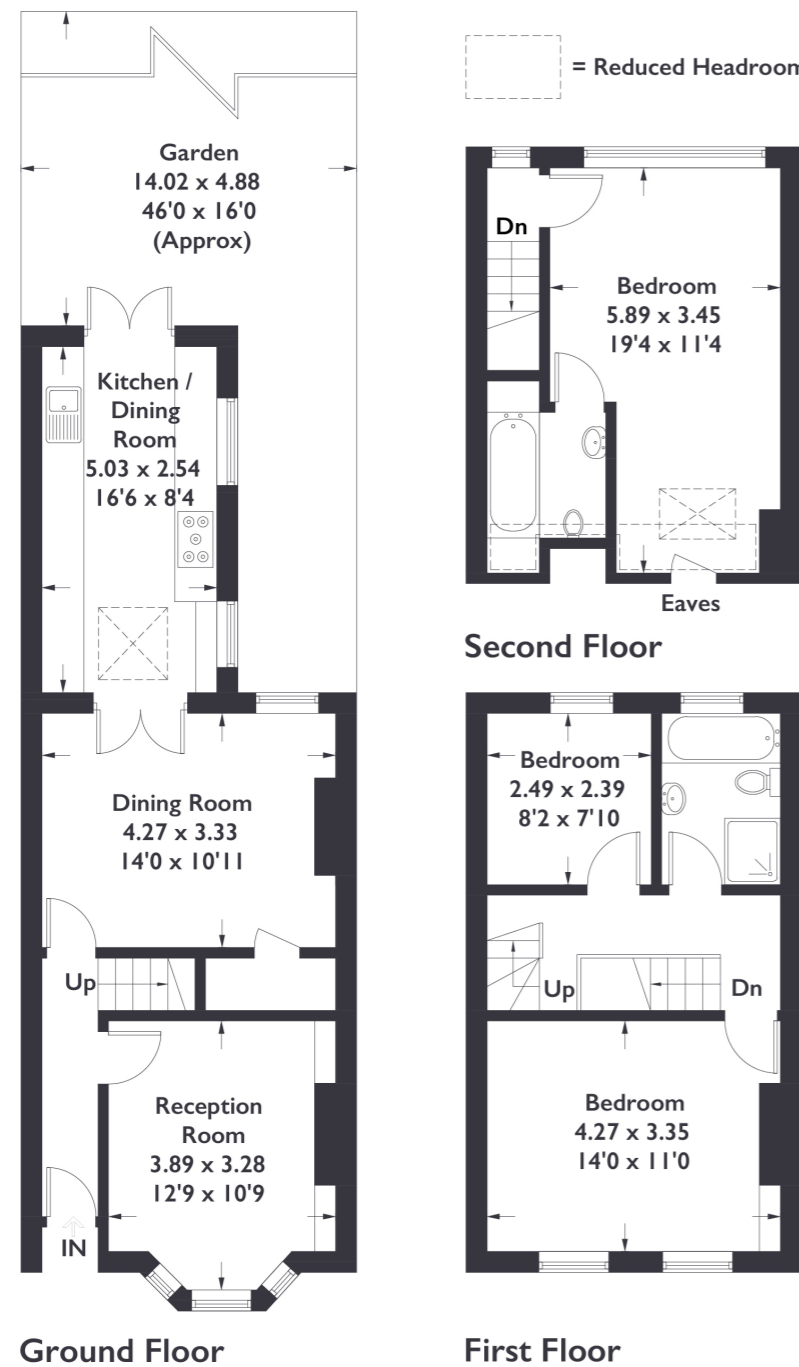


Green Avenue, W13

Approximate Gross Internal Area = 105.4 sq m / 1135 sq ft
(Including Reduced Headroom)



3 BEDROOM HOUSE

Green Avenue, W13

£895,000

This impressive three bedroom property located within the heart of Northfields boasts characterful designs with modern aspects and would be a great addition for a growing family.

FEATURES

- Freehold
- Three Bedrooms
- Extended Into The Loft
- Well Maintained Garden
- Period Features
- Fielding Primary School Nearby
- Northfields Station Moments Away
- Energy Rating: D

Measured in accordance with RICS Code of Measuring Practice. To be used for identification and guidance purposes only. Whilst every care is taken in the preparation of this plan, please check all dimensions, shapes and compass bearings before making any decisions reliant upon them.



3 BEDROOM HOUSE

Green Avenue, W13

£895,000

The property is arranged over three floors.

Upon entry through a warm and welcoming hallway, the property opens into a beautiful ground floor living space consisting of a spacious lounge area with a bay window to the front of the property. Leading through, you'll find a stylish dining area with access to under stair storage. The kitchen is flooded with natural light and boasts ample amount of storage space, plus you have the potential to extend (subject to planning permission). A well maintained garden with rear access completes the ground floor. The first floor features a generously sized double bedroom to the front, a smaller bedroom to the rear and family bathroom. The loft has been tastefully converted to accommodate a large double bedroom with eaves storage space, with the added benefit of an additional family bathroom.

Green Avenue is an ideal location when it comes to having everything only a stones throw away from your doorstep. Northfields station (Piccadilly Line) is under a five minute walk away plus there's easy access into Ealing Broadway shopping centre via Lammas and Walpole Park. Ofsted Outstanding schools such as Fielding Primary School and Elthorne Park High School are close by also. Northfield Avenue is also a stones throw away, offering a great selection of shops, cafes and restaurants.

