



Adelaide Grove, London, W12 0JJ

Cow & Co
LONDON



Guide price of £950,000 to £1,000,000. A very spacious three bedroom house on an attractive street of period terraces with popular schools nearby.

This desirable property offers three spacious bedrooms a large galley kitchen, a great sized family bathroom and a light filled double reception room whilst also benefitting from a delightful patio garden.

Adelaide Grove is in the popular 'Groves' area, desirable for both young families and professionals. It is a well located and sought after residential road with all the amenities of the Uxbridge road nearby. W12 offers enviable access links including Shepherds Bush Market Hammersmith and City line (0.5miles), the Shepherds Bush Central line and Overground National Rail line (0.75mile).

Close to Westfield London, Soho House and all the new eateries of White City, an array of independent bars and restaurants

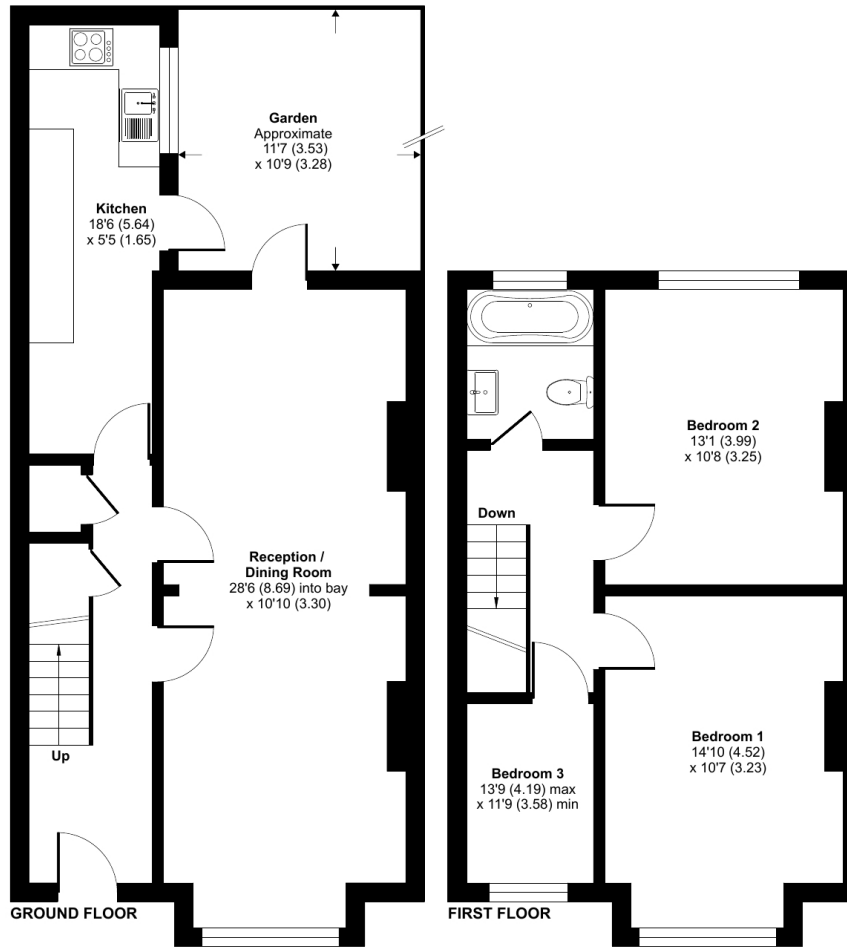


- Three bedroom bedroom family home
- Popular and peaceful residential road
- Double reception room
- Separate kitchen
- Garden
- Potential to convert loft space (Subject To Planning Permission)
- Desirable location with excellent schools nearby
- Excellent amenities and transport links nearby

Adelaide Grove, London, W12

Approximate Area = 989 sq ft / 91.8 sq m

For identification only - Not to scale



Floor plan produced in accordance with RICS Property Measurement Standards incorporating International Property Measurement Standards (IPMS2 Residential). © nchecon 2024. Produced for Cow & Co Properties Ltd. REF: 1133887

Tel: 0208 065 0010
Email: thehub@cowandco-london.com
Web: cowandco-london.com

Agents note: All measurements are approximate and whilst every attempt has been made to ensure accuracy they are for general guidance only and must not be relied on. The fixture and fittings referred to have not been tested and therefore no guarantee can be given that they are in working order. Internal photographs are reproduced for general information and it must not be inferred that any item shown is included with the property.

Cow & Co

LONDON