



3 Horsburgh Grove, Balemo, City of Edinburgh, EH14 7BU

Tastefully Presented and Exceptionally Spacious, Five-Bedroom, Detached House

Up to date price and viewing info at mov8realestate.com/property

espc rightmove  Zoopla
find your happy

Property Description

Tastefully presented and exceptionally spacious, five-bedroom, detached house, with gardens and a driveway. Set on a generous plot, located in the desirable Balerno area, southwest of Edinburgh city centre.

Comprises a porch, hall, living room, dining room, kitchen, five bedrooms, family bathroom and a ground-floor WC.

This rarely available property is located in a sought-after area, with good schooling and excellent commuting links. Highlights include generous and flexible room sizes, fitted kitchen and bathroom suites and good storage, including a loft. In addition, there is double glazing, HIVE gas central heating, a gas fireplace in the living room and multiple TV points.

There is a lawn and a multi-vehicle driveway to the front, whilst an enclosed rear garden includes a lawn and decked patios.

There is an opportunity, subject to obtaining the appropriate permissions, to extend into the sizeable rear garden.

A bright entrance porch, with space for outerwear, opens into a welcoming entrance hall, with a WC, finished with light, neutral decor and floor tiles. On the left, a front-facing living room includes a feature fireplace and enjoys plenty of natural light from a wide, southwest-facing window. A generous floorplan is available for freestanding furniture and the well-presented reception room opens into a dining room, via sliding doors. Opening onto a decked terrace, via glazed doors, the dining room also leads into a kitchen which also opens onto the garden and enjoys separate access from the hall. The kitchen is fitted with modern, wood-effect units and dark, stone-effect worktops, whilst appliances include an integrated, eye-level double oven, a gas hob, a stainless-steel canopy, a dishwasher and a freestanding fridge/freezer, with plumbing and space available for a washing machine. Completing the ground floor, and currently arranged as a family room, a bedroom offers great versatility and options for use.

Upstairs, the four remaining bedrooms also offer good-sized, versatile spaces, with the generously proportioned main bedroom further benefiting from built-in wardrobe storage.

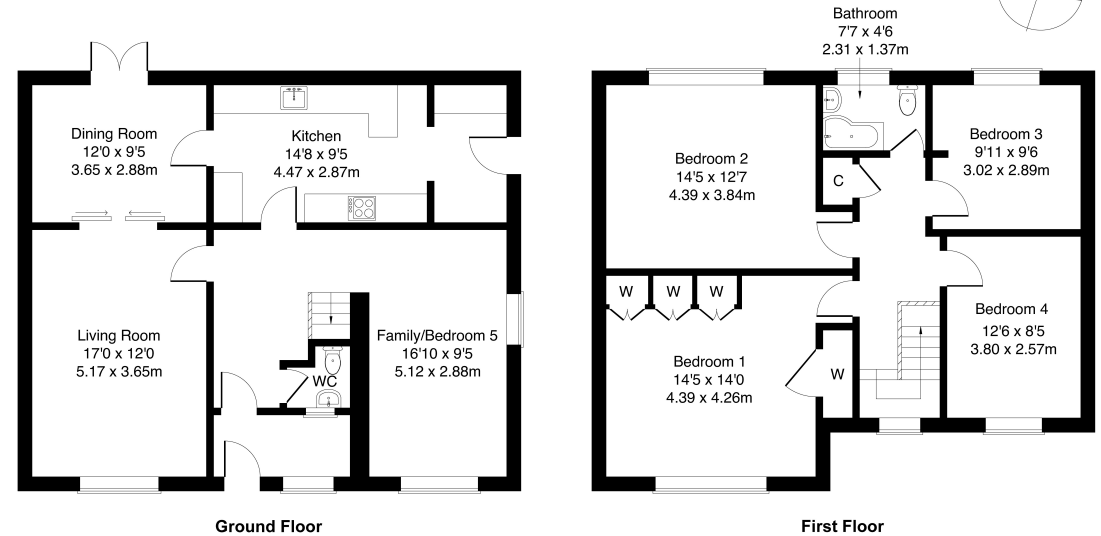
Completing the accommodation, a family bathroom comprises a white, three-piece suite, a shower-over-bath, vanity storage, a ladder-style radiator and panel splash walls.

N.B. The leather sofa in the living room and the wall-mounted television in the ground-floor bedroom are available by separate negotiation.



3 Horsburgh Grove, Balerno, EH14 7BU

Approximate Gross Internal Area: (1679 sq ft - 156 sq m.)



Legal Disclaimer : Floor-plan and measurements are for illustrative guidance only, and not intended to form part of any contract.

Area Description





Balerno is a sought-after residential village, some eight miles south-west of the city centre. Located just off the A70, it is ideal for commuting by bus or car, with the nearby city bypass connecting to the main trunk routes and Edinburgh Airport. The thriving community supports a range of local shopping, services and amenities, including sports clubs, a swimming pool, and well-regarded primary

and high schools. There are supermarkets at The Gyle and Hermiston Gait retail parks and at Colinton and Longstone. Balerno lies on the edge of the Pentland Hills Regional Park and is convenient for pleasant woodland pathways along the Water of Leith, around Harlaw and Threipmuir, and in Balerno's Malleny Gardens, with golf courses at Dalmahoy and Baberton.





Our Services

-  Free pre-sale property valuations
-  Great value fixed estate agency fees
-  Extensive buyer matching database
-  Purchase and sale conveyancing

Contact Us

0345 646 0208

sales@mov8realestate.com

www.mov8.com

Head Office

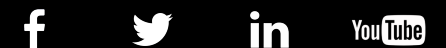
6 Redheughs Rigg, Edinburgh, EH12 9DQ

Glasgow Office

77 Renfrew Street, Glasgow, G2 3BZ



Estate Agents and Solicitors



These particulars do not form part of any contract and the statements or plans contained herein are not warranted nor are they to scale. All descriptions, dimensions, areas, reference to condition and necessary permissions for use and occupation and other details are given in good faith, and are believed to be correct, but any prospective purchaser should not rely on them as statements or representations of fact, and any prospective purchaser must satisfy themselves by inspection or otherwise as to the correctness of each of them. The Seller shall not be bound to accept the highest or any offer nor to accept a full offer of the Fixed Price where this is applicable. Approximate measurements have been taken by sonic device and measurements are most often taken to the widest point of any room or space. Services and appliances have not been tested for efficiency or safety and no warranty is given as to their compliance with any Regulations. Offers should be made using the Combined Standard Clauses.