



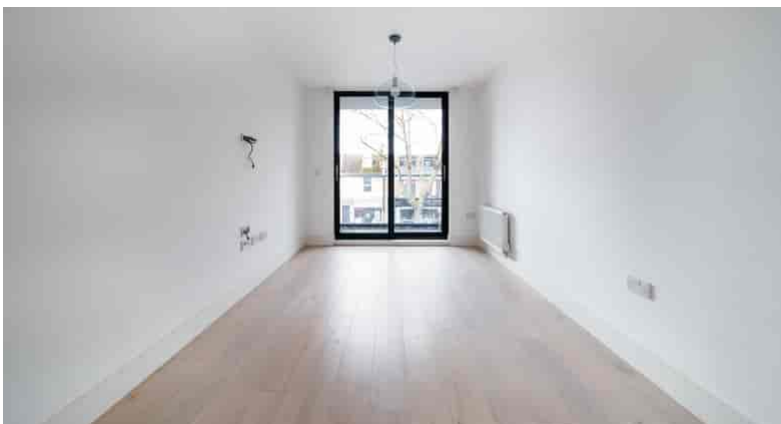
Chiswick High Road, London, W4 4HH

Cow & Co
LONDON



A brilliantly located one double bedroom modern built apartment offering bright and spacious accommodation. The property has the added benefit of a large private balcony and is available for rent unfurnished and straight away.

A short walk from your apartment takes you to the Underground at Chiswick Park Station (1-2-minute walk). Alternatively, you have the choice of Overground or Mainline trains from Gunnersbury Station (8-minute walk) or Chiswick Station (5 minute cycle).

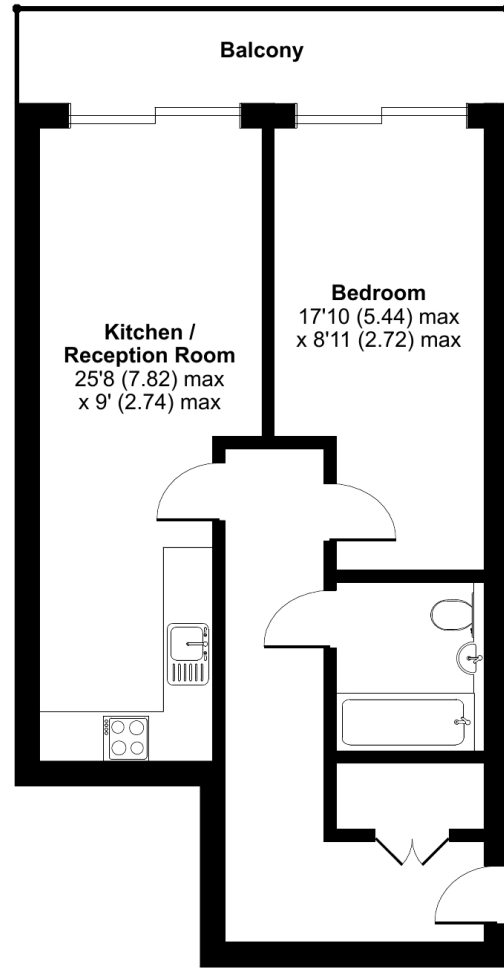


- One double bedroom apartment
- Modern built
- Sleek contemporary style open plan kitchen with ample space to dine and entertain
- Large private balcony
- Close proximity to local transport links and amenities
- Well appointed bathroom with shower over
- Available now to rent
- Bright & spacious

Chiswick High Road, London, W4

Approximate Area = 539 sq ft / 50 sq m

For identification only - Not to scale



FIRST FLOOR



Floor plan produced in accordance with RICS Property Measurement Standards incorporating International Property Measurement Standards (IPMS2 Residential). © nchecon 2024. Produced for Cow & Co Properties Ltd. REF: 1107414

Tel: 0208 065 0010
Email: thehub@cowandco-london.com
Web: cowandco-london.com

Agents note: All measurements are approximate and whilst every attempt has been made to ensure accuracy they are for general guidance only and must not be relied on. The fixture and fittings referred to have not been tested and therefore no guarantee can be given that they are in working order. Internal photographs are reproduced for general information and it must not be inferred that any item shown is included with the property.

Cow & Co
LONDON