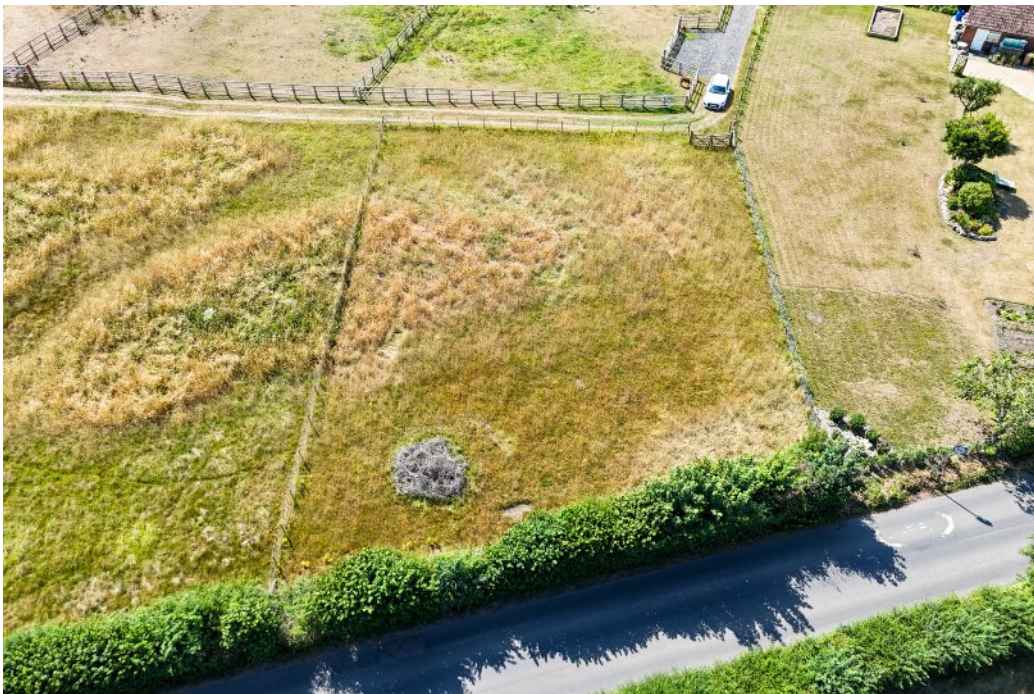




Plot 6 Land

Lying To The East Of Mount Lane, Lockerley, Romsey

SPENCERS
ROMSEY



Freehold Parcel of Land – Approaching 0.25 acres

Offered with Full Vacant Possession

Description

A freehold parcel of land approaching 0.25 acres, offered with full vacant possession. The land, previously used for grazing, is accessed via a right of way leading directly to Mount Lane. The site may be suitable for a range of uses, including potential future development, subject to obtaining all necessary planning consents. The land is offered for sale on an unconditional basis. Prospective purchasers intending alternative uses or development are advised to make their own enquiries with the relevant authorities regarding any required permissions.



Guide Price £35,000





The Situation

The site benefits from access via a right of way to Mount Lane and adjoins residential properties situated on the southern side of the road. It is located off the southern side of Lockerley Road, approximately 6 miles north-west of Romsey, which offers a wide range of shopping facilities and recreational amenities.

Directions

From Romsey, follow the B3398 for a short distance to connect with Bypass Road (A27/A3090) for approximately 1 minute (0.2 miles). Continue along the A27, for roughly 7 minutes (4.0 miles) until you reach Romsey Road. Finally, stay on Romsey Road and proceed into Butts Green. Before entering the village, turn left onto Cooks Lane and immediately turn left again onto Mounts Lane. The Land is located circa 80 meters on the left.

Viewing

Please call to register your interest.

Important Information

Spencers Property would like to point out that all measurements set out in these particulars are approximate and are for guidance only. We have not tested any apparatus, equipment, systems or services etc and cannot confirm that they are in full efficient working order or fit for purpose. No assumption should be made as to compliance with planning consents or current usage. Nothing in these particulars is intended to indicate that any carpets or curtains, furnishings or fittings, electrical goods (whether wired or not), gas fires or light fittings, or any other fixtures not expressly included form any part of the property being offered for sale. Whilst we endeavour to make our sales particulars accurate and reliable, if there is any point which is of particular importance to you, please contact us and we will be happy to confirm the position to you.