

keatsfearn



Green Views, Boundary Road, Dockenfield, Farnham, Surrey. GU10 4EU.

£2,500 pcm

- Splendid Barn Conversion
- 2 Bath/ shower rooms (1 en-suite)
- Quality kitchen
- Appliances included
- Rural location
- 3 Bedrooms
- Lounge with bi-fold doors
- Driveway for several cars
- Outside brick built storage shed

15 Downing Street , Farnham, Surrey, GU9 7PB

Tel: 01252 718018

Email: sales@keatsfearn.co.uk

Web: www.keatsfearn.co.uk

Energy Efficiency Rating		Current	Potential
Very energy efficient - lower running costs			97
(92+)	A		
(81-91)	B		
(69-80)	C	79	
(55-68)	D		
(39-54)	E		
(21-38)	F		
(1-20)	G		
Not energy efficient - higher running costs			
England, Scotland & Wales		EU Directive 2002/91/EC	

Description

Greenviews is in the sought after village of Dockenfield within the Parish of Frensham near the Georgian town of Farnham. Alice Holt Forest is very close by offering walking and cycling and sailing at Frensham Great Pond. Dockenfield boasts a popular village pub, The Bluebell. The nearby village of Rowledge has a village shop, butcher, post office, and The Hare and Hounds public house.

Services: Mains water, gas, private drainage via Klargester. Pressurised water system (Megaflo) and gas boiler that serves radiators.

Directions

SAT NAV - GU10 4EU

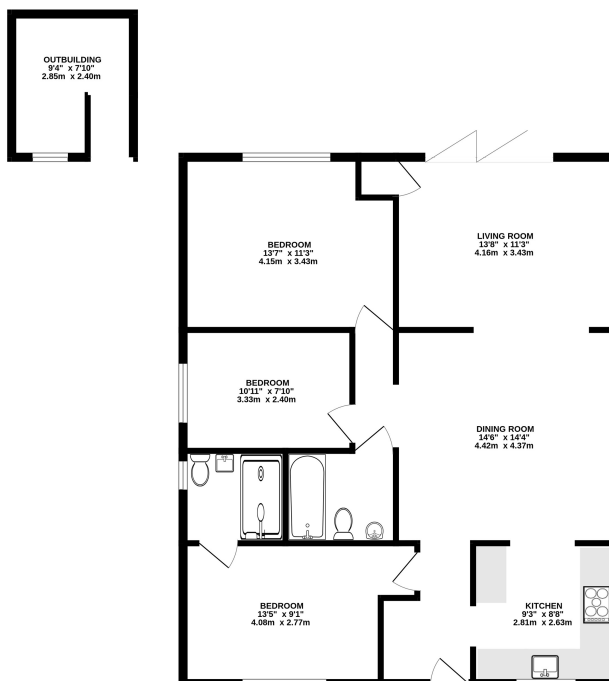
Tenants Fees

Tenant is responsible for paying utility bills and council tax. • Holding Deposit (Goes towards 1st month's rent) - 1 weeks Rent. • Security Deposit (payable once tenancy agreement is signed) - 5 weeks rent. • Rent payable in advance (payable once tenancy agreement is signed) - 1 month (minus holding deposit). Lets Help Property Management Services Ltd handle all client money on behalf of Keats Fearn and are a member of the Propertymark Client Money Protection Scheme No C0124095. Tenant's Notes - Proof of a professional clean on exit will be required including the appliances.

Local Authority

Waverley
Band D

1039 sq.ft. (96.5 sq.m.) approx.



TOTAL FLOOR AREA - 1039 sq ft. (96.5 sq.m.) approx.
While every attempt has been made to ensure the accuracy of the floorplan contained here, measurements of floors, windows, doors and any other items are approximate and no responsibility is taken for any error, omission or mis-statement. This plan is for illustrative purposes only and should be used as such by any prospective purchaser. The services, systems and appliances shown have not been tested and no guarantee as to their operability or efficiency can be given.
Made with Metropix 1000s

For clarification we wish to inform prospective purchasers/tenants that we have prepared these sales particulars as a general guide. We have not carried out a detailed survey or tested the services, appliances and specific fittings.