



Offers Over £119,950
40 Carden Castle Park, Cardenden, Lochgelly, Fife, KY5 0EG

40 Carden Castle Park, Cardenden, Lochgelly, Fife, KY5 0EG

Welcome to 40 Carden Castle Park, Cardenden. A Well-Presented Semi-Detached Villa with Driveway and Detached Garage, ideally located within a sought-after residential area of Cardenden. Benefiting from a detached garage and private driveway, this property offers excellent space both inside and out.

The accommodation begins with a welcoming entrance hallway, leading into a bright and spacious lounge featuring a charming bay window formation, allowing for an abundance of natural light.

To the rear, the kitchen offers a practical layout with ample storage provided by a range of floor and wall-mounted units. It is equipped with a range-style double cooker, gas hob, and overhead extractor fan. There is also space for a freestanding fridge freezer and plumbing for a washing machine.

The upper level comprises two generous double bedrooms and a further box room, ideal for use as a home office, nursery, or additional storage. A centrally located family bathroom serves all rooms.

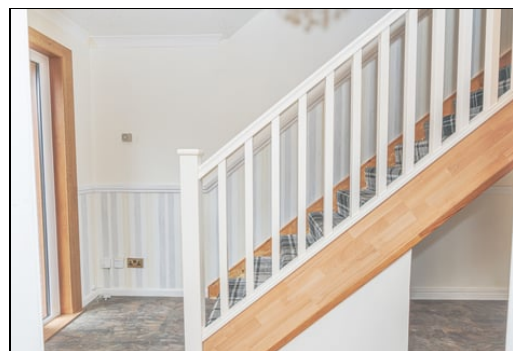
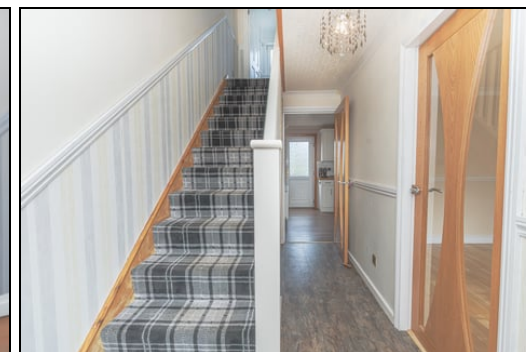
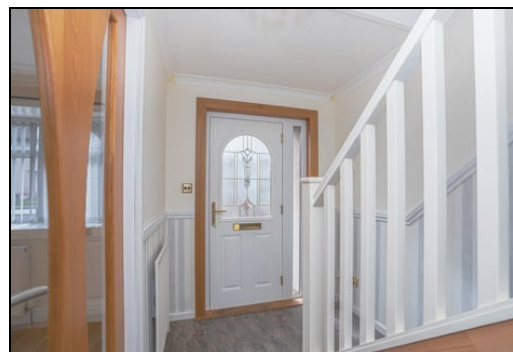
Externally, the property benefits from private gardens to the front and rear, along with a private driveway providing off-street parking. A detached garage further enhances the property, offering excellent additional storage or workshop potential. The property also benefits from gas central heating and double glazing.

40 Carden Castle Park is situated in the popular village of Cardenden, offering a range of local amenities including shops, schools, and leisure facilities. The area is well-served by public transport, with Cardenden railway station providing regular services to Edinburgh and beyond, while nearby road links make commuting across Fife and to surrounding areas straightforward.

Early viewing is highly recommended to appreciate the space, potential, and excellent location on offer

ground floor

Entrance hallway



Lounge



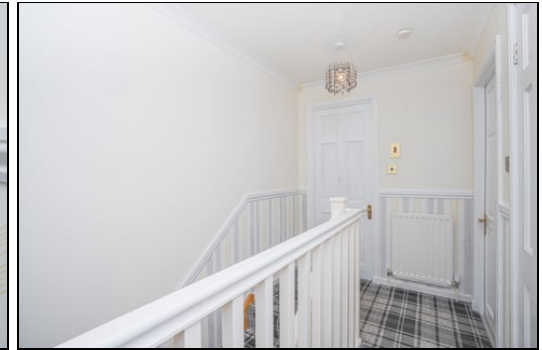
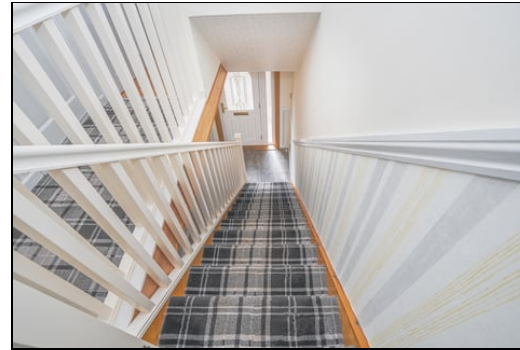
3.77m x 4.33m (12' 4" x 14' 2")



Kitchen



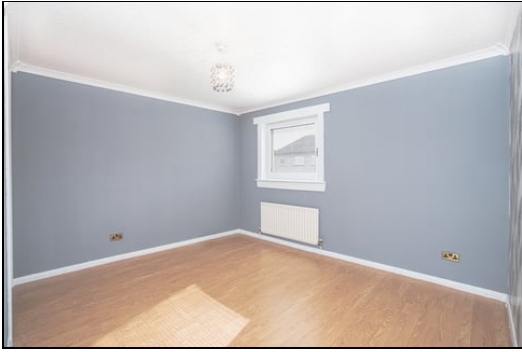
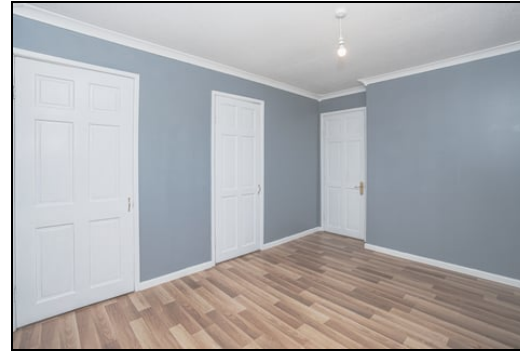
Top Hallway



2.3m x 4.8m (7' 7" x 15' 9")

first floor

Bedroom front



3.58m x 3.76m (11' 9" x 12' 4")

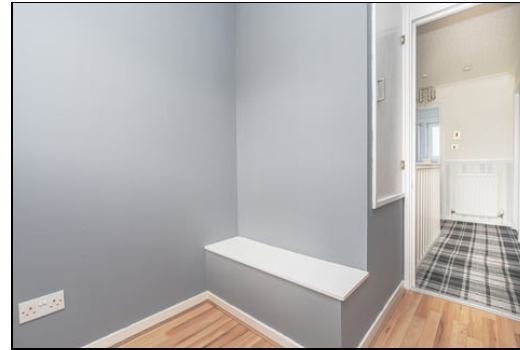
Bedroom rear



2.86m x 2.79m (9' 5" x 9' 2")



Box room



1.84m x 2.6m (6' 0" x 8' 6")



Bathroom



1.77m x 2.08m (5' 10" x 6' 10")



Gardens



Extras

All floor coverings, Double range cooker, gas hob, and overhead extractor fan.

SONIC TAPE

All measurements have been taken using a sonic tape measure and therefore, may be subject to a small margin of error.



MEASUREMENTS

All measurements are approximate.

APPLIANCES/SERVICES

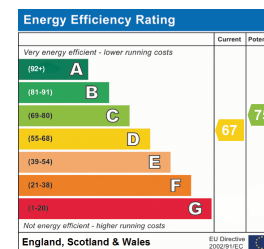
The mention of any appliances and/or services within these Sales Particulars does not imply they are in fully working order.

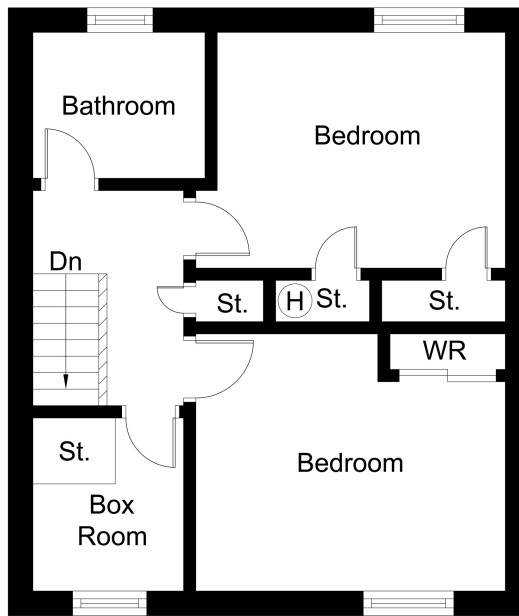
MORTGAGE & FINANCIAL ADVICE

Qualified Mortgage and Financial Consultants can provide you with up to the minute information on many of the rates available. To arrange an appointment telephone this office. **YOUR HOME IS AT RISK IF YOU DO NOT KEEP UP REPAYMENTS ON A MORTGAGE OR OTHER LOANS SECURED ON IT.** Full written quotation available on request. A suitable life policy may be required. Loans are subject to status. Minimum age 18.

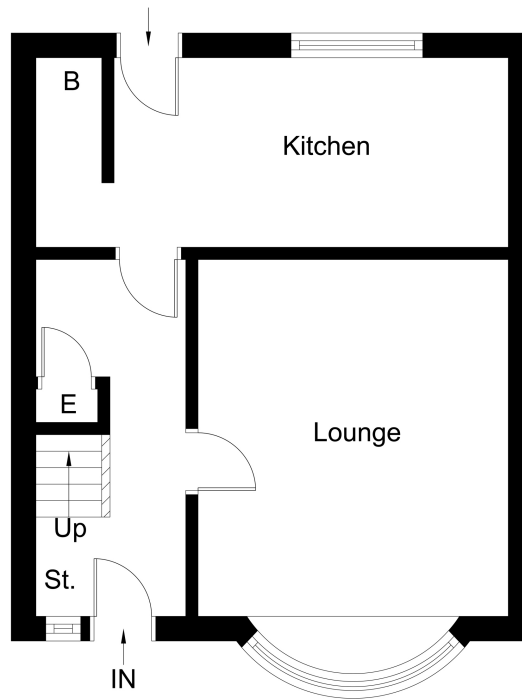
FREE VALUATION

How much is your property worth?. We can provide you with the answer. We offer a free valuation service without cost or obligation. Please call this office for an appointment.





First Floor



Ground Floor