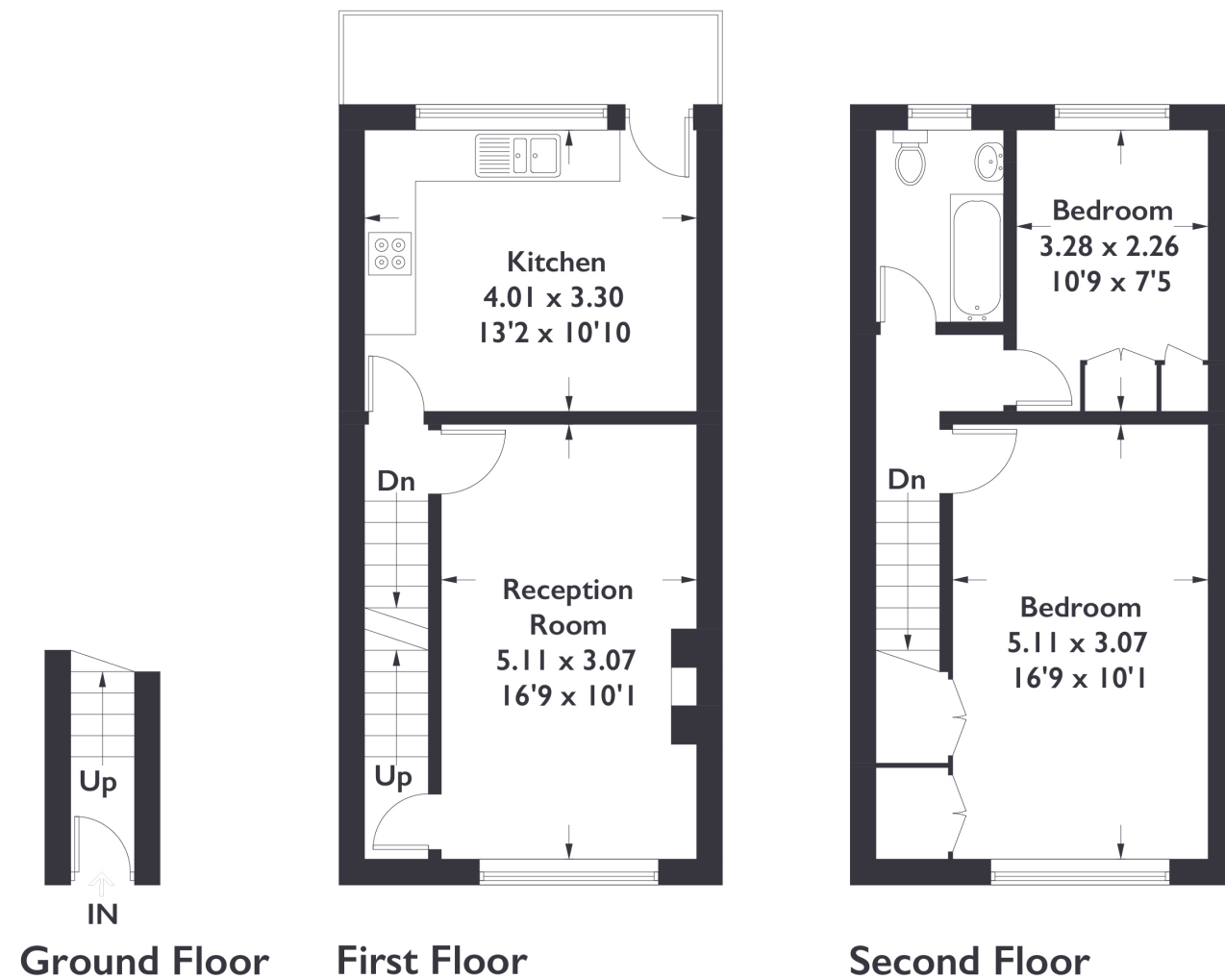


Byron Court, W7

Approximate Gross Internal Area = 70.8 sq m / 763 sq ft



2 BEDROOM FLAT

Byron Court, W7

£399,950

This charming split level flat is located on the popular Boston Manor Road, just moments from the Piccadilly Line and situated conveniently for local schools, amenities and transport links. Offered on a chain free basis, this first and second floor property boasts two generously sized bedrooms and a split level configuration.

FEATURES

- Split Over Two Floors
- Two Bedrooms
- Built In Storage Throughout
- Leasehold
- Fielding Primary School Nearby
- Elthorne Park High School Nearby
- Boston Manor Tube Station

Measured in accordance with RICS Code of Measuring Practice. To be used for identification and guidance purposes only. Whilst every care is taken in the preparation of this plan, please check all dimensions, shapes and compass bearings before making any decisions reliant upon them.



2 BEDROOM FLAT

Byron Court, W7

£399,950

The first floor offers a bright and spacious kitchen / diner with access to the rear out onto a balcony.

Leading through, the living room is a great size with plenty of space. The second floor boasts a large double bedroom to the front of the property and a smaller bedroom to the rear, both including built in storage units. A family bathroom on the second floor completes the property.

Byron Court sits conveniently with easy access into both Northfields and Brentford via the Boston Manor Road. The M4 is located just a stones throw away, with Boston Manor Station (Piccadilly Line) also being under a five minute walk away. The Ofsted Outstanding Fielding Primary School and Elthorne Park High School are both short walks away also.

