

VOSS STREET

LONDON E2 6JE



THE PROPERTY BROKERS

Freehold

- 1100 sqft (approx.)
- 3 bed 2 bath
- Mews house
- Studio Verve Architects
- Two balconies

LAST REMAINING HOUSE

Tucked away discreetly along a cobbled street lies this architecturally designed 3 bedroom 2 bathroom mews house, in the East Ends original silk weavers district. This house at Voss Street has been selected for prestigious and widely published awards such as Dezeen Awards 2020 and New London Awards 2020, shortlisted of only 5 projects.

Upon entering you are immediately drawn towards the central foyer, with white oak timber flooring and vertical granite railings that accompany a floating staircase. Floor to ceiling, framed glass segments of wall in



VOSS STREET

LONDON E2 6JE



THE PROPERTY BROKERS

the kitchen/ dining and reception room enable light to cascade throughout the property, while exposed brick walls and crittall style screens and doors, add texture and enhance the sense of warehouse living.

There are two terraces, one to the front of the house off the reception room and another to the rear on the top floor. The sleek kitchen is fitted with Blaupunkt appliances and black Terrazzo stone worktop. Japanese Shou sugi ban charred timber adds a sense of tranquillity to the bedroom walls and built-in wardrobes. The two bathrooms are finished in Italian white Terrazzo stone, accented with matt black fittings. The house also features Sonos ceiling speakers and underfloor heating throughout. The attention to detail and quality of materials used make this boutique house truly unique.

Located next to Weavers Fields, situated just a street behind the development, is the largest park in Bethnal Green, it has three



VOSS STREET

LONDON E2 6JE

full-size football pitches, a woodland walk and plenty of open spaces. There is no shortage of local amenity and an ever changing array of new and exciting restaurants, bars and shops all around the corner. Transport connections are nearby and convenient with Shoreditch High Street Overground less than a 15 minute walk and Bethnal Green underground a 10 minute walk.

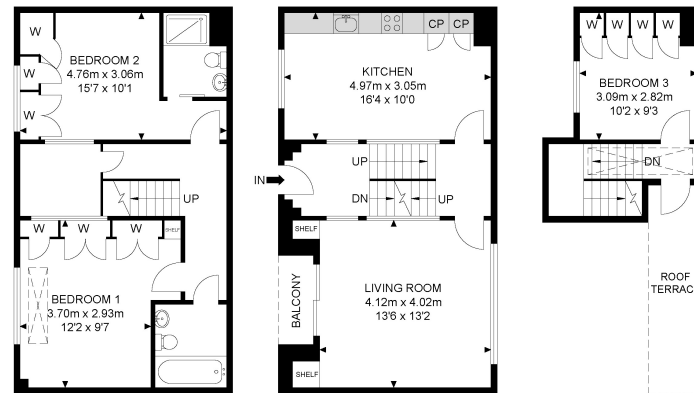


VOSS STREET

LONDON E2 6JE



Voss Street



Lower Ground Floor

Ground Floor

1st Floor



APPROX. GROSS INTERNAL FLOOR AREA 1083.92 SQ FT / 100.70 SQM

APPROX. GROSS EXTERNAL FLOOR AREA 91.49 SQ FT / 8.50 SQM

Whilst every attempt has been made to ensure the accuracy of the floor plan contained here, measurements of doors, windows, rooms and any other items are approximated and no responsibility is taken for any error, omission or mis-statement. This plan is for illustrative purposes only and should be used as such by any prospective purchaser. The service, system and appliances shown have not been tested and no guarantee as to their operability or efficiency can be given.

© SpacePhoto

Photography and Floor Plan

SALES
LETTINGS
OFF MARKET
ACQUISITIONS
DEVELOPMENT
COMMERCIAL
VALUATIONS

TOBIAS ALLAN

Director

07970 963 478

JAMES DANTON

Director

07930 858 612

ADAM JONES

Director

07769 275 027

