

COBBLESTONE

ESTATES

46 Jeffery Street,
Gillingham, ME7 1BZ

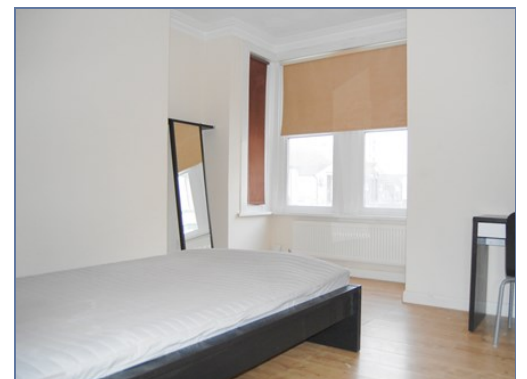
Tel: 01634 780760
info@cobblestoneestates.co.uk



13 Milner Road, Gillingham, Kent, ME7 1RD

£975 £1,200 pcm Not Applicable

- Available Now
- Four/Five bedrooms
- Fully Furnished
- Patio Garden Area
- Garage
- EPC Rating TBC





NO DEPOSIT OPTION ON THIS PROPERTY*

Four/five-bedroom Victorian end of terrace house situated in Gillingham within easy access to the Town Centre, mainline railway station and university. The fully furnished property includes of four / five double bedrooms, bathroom with shower over the bath, good size modern kitchen, spacious living room, dining room currently 5th bedroom, utility room and downstairs WC and further benefits from easy to maintain rear patio garden.