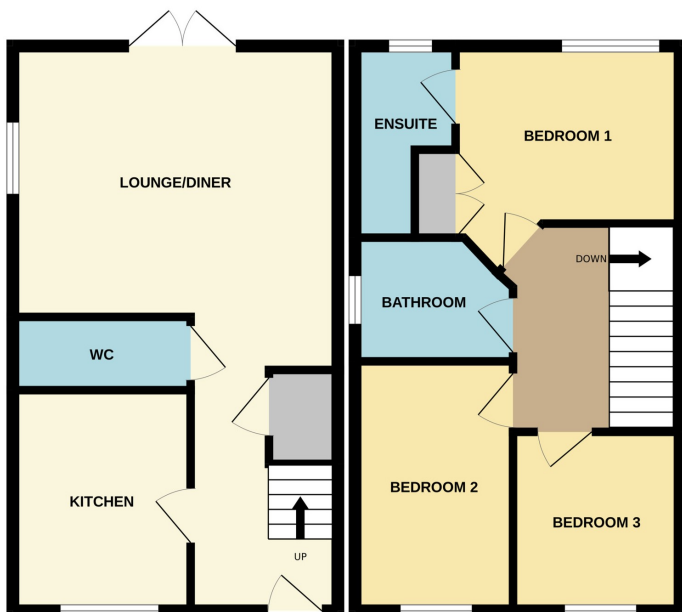




MARKET DEEPING

£268,000



*** FAMILY HOME *** This well-presented three-bedroom end of terrace home is ideally situated close to local amenities. The accommodation briefly comprises an entrance hall, modern fitted kitchen, downstairs cloakroom, and a spacious lounge/diner with French doors opening onto the rear garden. Upstairs, there are three bedrooms, including a principal bedroom with built-in wardrobe and en-suite shower room, along with a family bathroom. Externally, the property benefits from a driveway providing tandem parking for two to three vehicles, and a good-sized enclosed rear garden. EPC Energy Rating B / Council Tax Band B.