



Darkes Lane, Potters Bar, Hertfordshire, EN6

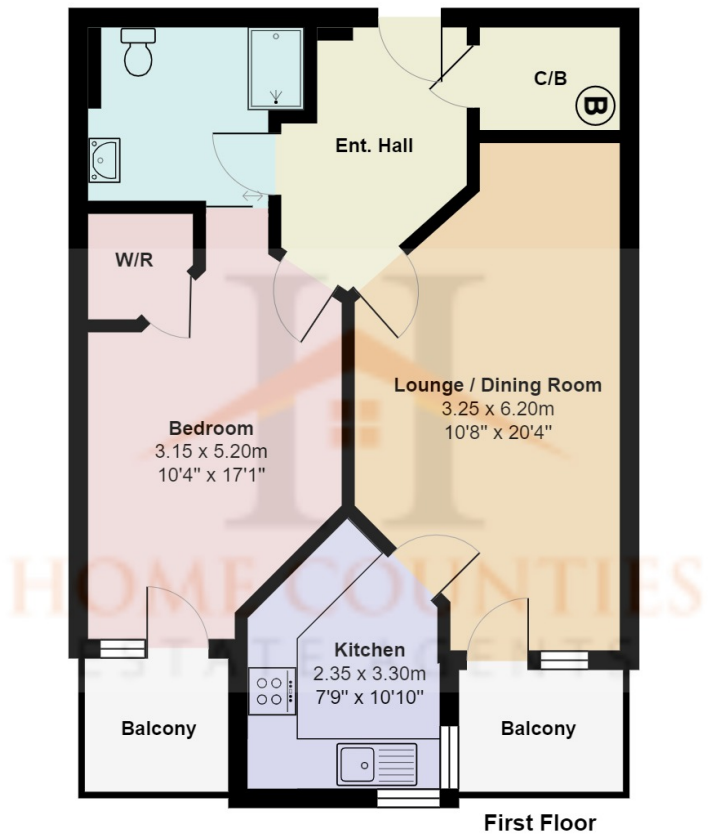
£1,500 pcm

- McCarthy and Stone Retirement Home
- Wet Room
- Balcony to Bedroom
- Communal Gardens
- 24 Hour Emergency Call Systems
- One Bedroom
- Balcony to Lounge
- Fitted Kitchen
- Double Glazed
- Table Service Restaurant

Darkes Lane, Potters Bar, Hertfordshire, . EN6

£1,500 pcm Leasehold

This delightful One bedroom first floor 'RETIREMENT PLUS' apartment in the ever popular Mandeville Court development. The property benefits from lounge with balcony, fitted kitchen with integrated appliances, one double bedroom with South Facing Balcony, wet room, underfloor heating and double glazing.



Mandeville Court, Hertfordshire EN6

Total Area: 53.3 m² ... 574 ft² (excluding terrace, balcony)

All measurements are approximate and for display purposes only



Energy Efficiency Rating		
	Current	Potential
Very energy efficient - lower running costs		
(92-100) A		
(81-91) B	89	89
(69-80) C		
(55-68) D		
(39-54) E		
(21-38) F		
(1-20) G		
Not energy efficient - higher running costs		
England, Scotland & Wales		
EU Directive 2002/91/EC		

