

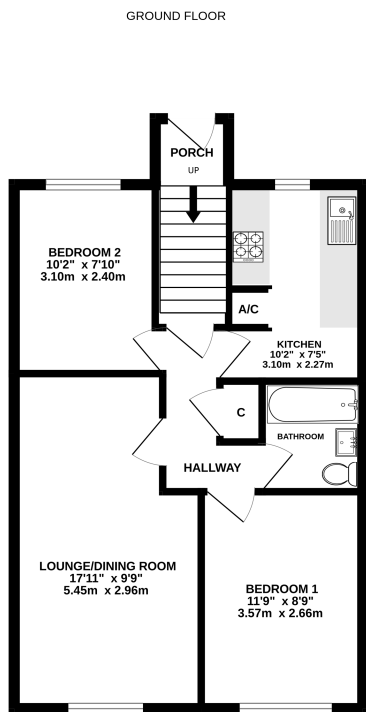
FOR SALE
£165,000



DESCRIPTION

Great for a first time buyer or buy to let investor this is a spacious 2 double bedroom maisonette situated to the North of Newbury town centre. The accommodation comprises a private entrance hallway, stairs leading to the landing, fully fitted kitchen, large lounge, 2 double bedrooms and a family bathroom. Outside you have communal parking and gardens.

FLOOR PLAN



Whilst every attempt has been made to ensure the accuracy of the floorplan contained herein, measurements of doors, windows, rooms and any other items are approximate and no responsibility is taken for any error, omission or misstatement. The plan is for illustrative purposes only and should be used as such by any prospective purchaser. The services, systems and appliances shown have not been tested and no guarantee as to their operability or efficiency can be given.
Made with Metreplan C003



- Personal entrance
- Lounge
- Kitchen
- Lounge/ diner
- Two double bedrooms
- Bathroom
- Approx 900 years remaining on the lease
- Approx £180 per annum maintenance charge
- Car port
- uPVC double glazing throughout
- Council tax band B

ENERGY EFFICIENCY RATING

Energy Efficiency Rating		Current	Potential
Very energy efficient - lower running costs			
(92+)	A		
(81-91)	B		
(69-80)	C		75
(55-68)	D		
(39-54)	E		
(21-38)	F	41	
(1-20)	G		
Not energy efficient - higher running costs			
England, Scotland & Wales		EU Directive 2002/91/EC	

