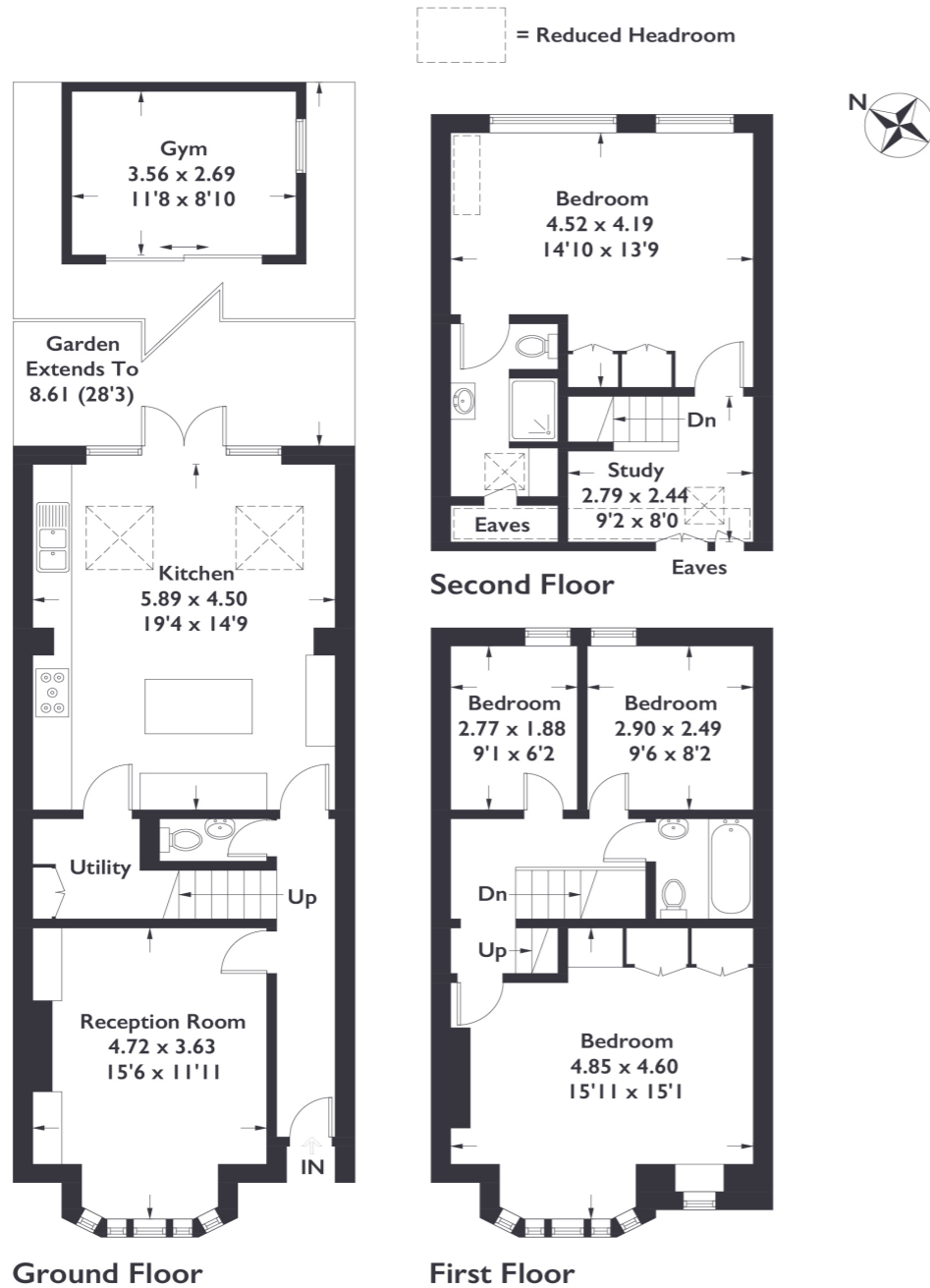


Northcroft Road, W13

Approximate Gross Internal Area = 132.5 sq m / 1427 sq ft
(Including Reduced Headroom)
Gym = 9.5 sq m / 103 sq ft



Measured in accordance with RICS Code of Measuring Practice. To be used for identification and guidance purposes only. Whilst every care is taken in the preparation of this plan, please check all dimensions, shapes and compass bearings before making any decisions reliant upon them. www.london58.com © 2023 hello@london58.com



4 BEDROOM HOUSE

Northcroft Road, W13
£1,095,000

This exquisite two-storey house is gracefully nestled in the prime location of Northfields, boasting the highly sought-after catchment area of Fielding Primary School. With four bedrooms, three bathrooms, a separate reception room, and an open-plan kitchen diner, this home offers both space and style.

FEATURES

- Four Bedrooms
- Three Bathrooms
- Open Plan Kitchen/Diner
- Water Softener Throughout
- Fielding Primary Catchment
- Northfields Station
- EPC Rating D



4 BEDROOM HOUSE

Northcroft Road, W13

Tastefully decorated with stunning interiors and thoughtfully renovated in 2021 this home ensures a modern, and inviting living space.

The addition of a water softener and a flueless gas fireplace adds to the comfort and luxury of this home. Beyond these features, the property offers a delightful garden, complete with an outhouse that is currently set up as a gym. This house is a true gem, offering the perfect blend of elegance, convenience, and functionality. EPC Rating D.

