



9 Whittle Court,  
Knowlhill, Milton Keynes, MK5 8FT

Tel: 01908 231 551



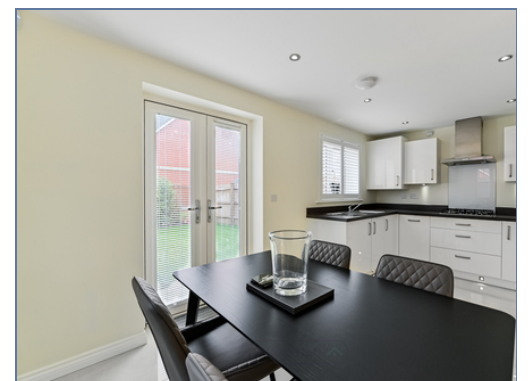
mail@elevationstateagents.com



**8 Perry Close, Newton Leys, Bletchley,  
Milton Keynes, Bletchley, Milton Keynes,  
Buckinghamshire, MK3 5RD**

**£425,000 Freehold**

- Immaculate Throughout
- Three good sized rooms
- Detached
- Parking for 3 cars
- En-suite & Fitted Wardrobes In Master
- Large kitchen/Diner
- EPC Rating



See our full selection of properties online at [www.elevationstateagents.com](http://www.elevationstateagents.com)





This beautiful detached 3-bedroom family home is ideal for a growing family, offering both style and comfort. As you step inside, you are greeted by a welcoming entrance hall leading to a great sized spacious living room. Off the living room you have an open-plan kitchen and dining area and a convenient cloakroom .

Upstairs, you'll find three well-sized bedrooms, with the master bedroom benefiting from a modern ensuite. A family bathroom completes the upper floor. Outside, the property features three parking spaces and a detached garage, ensuring plenty of room for vehicles. The home is in excellent condition and enjoys picturesque views, overlooking serene farmers' fields, adding to its charm and tranquility. This is a perfect family home in a peaceful location!

**Location:** Newton Leys - Newton Leys is a district that covers the southern tip of Bletchley; on the boundary of the Borough of Milton Keynes and Aylesbury Vale. The area is currently under development and sits next to a man-made lake, approximately 7 miles from Central Milton Keynes and close to local Buckinghamshire villages. Water Hall Primary School is within a mile of the development, and Newton Leys Primary School opened in September 2016 to provide places for children aged 4 to 11 years.

### Disclaimer

Whilst we have endeavoured to prepare our sales particulars accurately none of the services, appliances or equipment have been tested. A buyer should satisfy themselves on such matters prior to purchase. Any measurements or distances mentioned in these particulars are for guide reference only. If such particulars are fundamental to a purchase, buyers should rely on their own enquiries. All enquiries should be directed to Elevation Estate Agents in the first instance.

