

hastings
INTERNATIONAL



Leaside Court

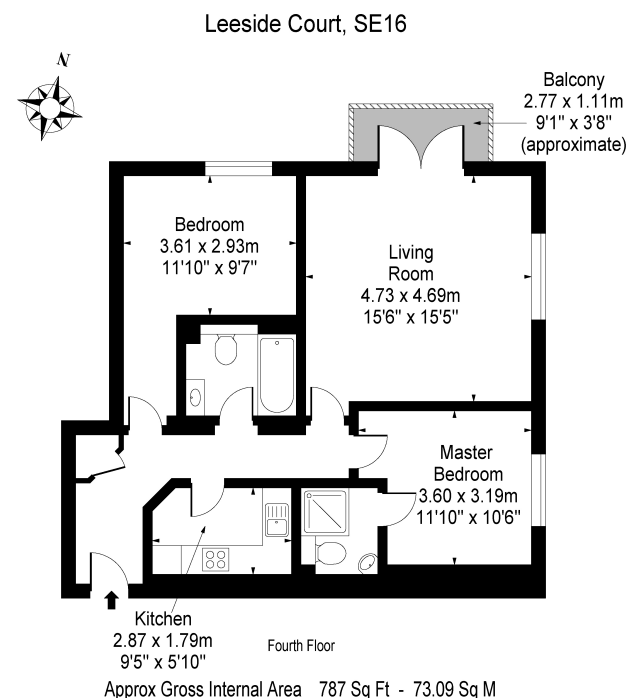
£575,000

Leeside Court, 169 Rotherhithe Street, London SE16 5SZ

A beautifully presented dual aspect, direct river facing, two bedroom, two bathroom apartment with private balcony providing wonderful river views towards the City with secure allocated parking, share of freehold and access to communal courtyards/gardens. Set within a sought after riverside development moments from the Thames Path, Stave Hill Ecological Park and Surrey Quays Shopping Centre. The nearest station is Canada Water [Jubilee and Overground] with regular riverboat services to Canary Wharf via nearby Rotherhithe Pier.

This exceptional dual aspect apartment comprises entrance hall with storage cupboard, impressive reception room with dining area and private balcony providing fabulous views of the river and the City beyond, separate fitted kitchen with work tops and integrated appliances, master bedroom with en-suite wet room and views towards Canary Wharf, guest bedroom two and family bathroom. The apartment has the benefit of a secure allocated car park space together with share of freehold and access to communal gardens and courtyards.

- Leeside Court SE16
- Two Double Bedrooms
- Private Balcony
- Riverside Gated Development
- Direct River Views
- Two Bathrooms
- Secure Allocated Parking
- Share Of Freehold



This floor plan should be used as a general outline for guidance only and does not constitute in whole or in part an offer or contract. Any intending purchaser or lessee should satisfy themselves by inspection, searches, enquiries and full survey as to the correctness of each statement. Any areas, measurements or distances quoted are approximate and should not be used to value a property or be the basis of any sale or let.





Energy Efficiency Rating		
	Current	Potential
Very energy efficient - lower running costs		
(92+) A		
(81-91) B		
(69-80) C	80	83
(55-68) D		
(39-54) E		
(21-38) F		
(1-20) G		
Not energy efficient - higher running costs		
England, Scotland & Wales	EU Directive 2002/91/EC 